

GATHERING

*funds from
donors —
helping them
achieve their
charitable
objectives*

GROWING

*the funds
through a
sound
investment
process*

GRANTING

*the funds for
charitable
projects*



*All Aimed at
Improving the
Quality of Life for
Idaho People*

TABLE OF CONTENTS

1997 Highlights	1
1997 in Review	2
Founding Donors	3
Friends of the Foundation	4
About the Foundation	4
Grant Making	8
1997 Grants	9
Funds of the Foundation	18
Summarized Financial Data	31
Foundation Board, Officers, and Staff	32

Mission of the Foundation

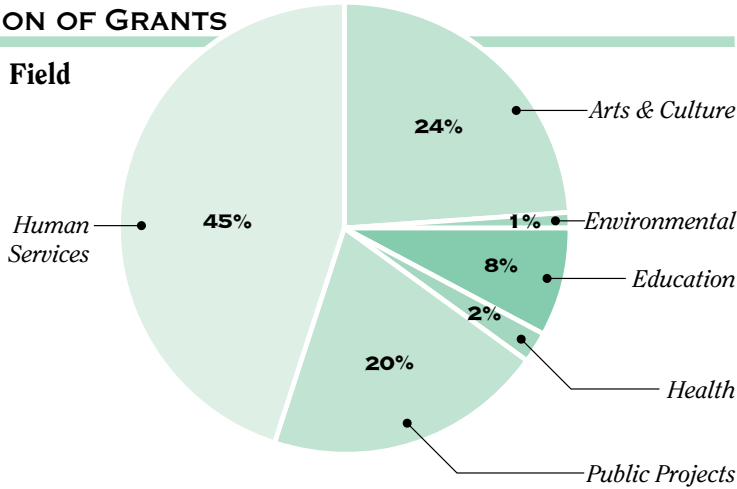
The mission of the Idaho Community Foundation is to improve the quality of life for all Idahoans—forever. The Foundation embodies a simple concept: people working together can make a difference. We carry out our mission by:

- Building a permanent endowment for our statewide community by offering maximum flexibility to donors of charitable gifts;
- Meeting high professional standards in the investment and management of the funds entrusted to the Foundation; and
- Promoting effective and efficient grant making designed to serve current and future community needs and strengthen charitable organizations throughout the state.

Simply put, we gather, grow, and grant charitable funds to improve the quality of life in Idaho.

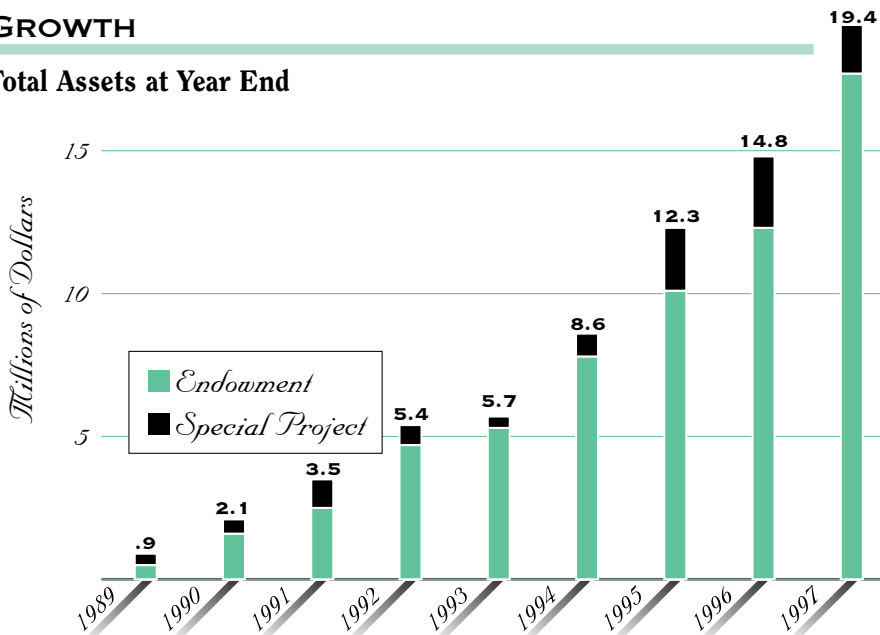
DISTRIBUTION OF GRANTS

by Charitable Field



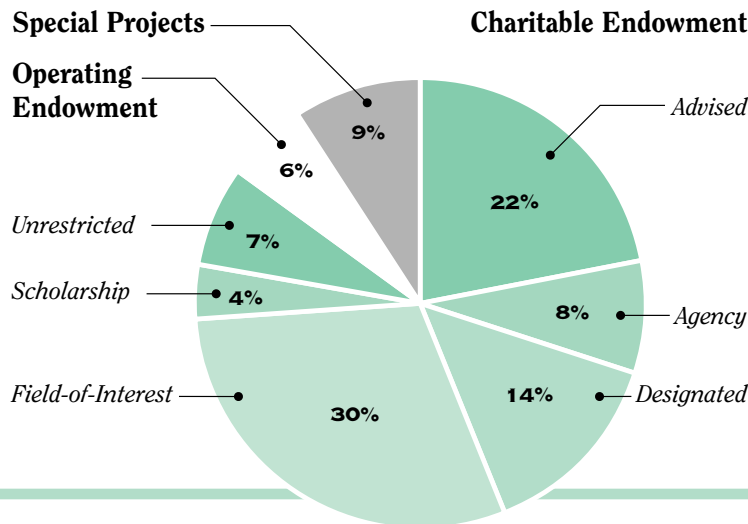
GROWTH

Total Assets at Year End



ASSETS OF THE FOUNDATION BY TYPE OF FUND

(\$19.4 million total net assets)



1997 Highlights

1997 DISTRIBUTION STATISTICS

From Unrestricted, Advised, and Field-of-Interest Funds – \$295,679*

Grant requests received 447

Grant requests approved 109

Percent of grant requests approved 24%

Total amount of dollars requested \$1,725,388

Percent of dollars requested that were approved 14%

See graph to left for Distribution of Grants by Charitable Field

From Scholarship Funds – \$20,170

Number of scholarships provided 22

From Designated and Special Project Funds – \$2,075,048

Colonial Theater Project Fund, Idaho Falls \$1,142,350

Steele-Reese Foundation Special Project Fund \$16,333

J.A. and Kathryn Albertson Education Fund \$703,094*

Grant requests received 148

Grant requests approved 99

Percent of grant requests approved 67%

Total amount of dollars requested \$1,631,594

Percent of dollars requested that were approved 45%

Total Distributions – \$2,390,897

All grants and other distributions received the review and approval of the Idaho Community Foundation board of directors.

*Excludes approved challenge grants not paid in 1997.



Park Price

CHAIRMAN



Alice Hennessey

PRESIDENT &
EXECUTIVE
DIRECTOR

In the life of every organization some years are better than others, and 1997 was a very good year for the Idaho Community Foundation. The previous page provides quantitative highlights, but behind the numbers was a lot of constructive activity by ICF's directors, members, regional advisory panels, and staff.

We established some priorities in last year's annual report, and in every case we made progress:

Visits to every county in Idaho and conversations with virtually anyone who would listen, broadened and deepened understanding of the Idaho Community Foundation.

Membership increased from 142 to 241, we received help and referrals from more financial advisors, and media coverage of Foundation activities was at an all-time high.

Investment management continued to be a priority. Through a combination of new contributions and market appreciation, ICF's permanent endowment increased from \$11.6 million at year end 1996 to \$17.7 million. Our return for the year was 28.5% for the equity portion of our portfolio, and 9.2% for the fixed income portion.

Archie Teater's plein aire paintings again began to sell as we moved forward with our responsibility for converting to cash the extensive collection of paintings left by this Idaho artist to benefit handicapped children. Some twenty years after his death, we commenced a campaign to reintroduce Archie to the art world.

Our statewide playgrounds project for communities of 3000 people or less helped the 19 recipient communities to help themselves, as they came up with cash, materials, or labor to match the ICF contributions they had received.

Outreach to other foundations resulted in the \$2.4 million Walter and Leona Dufresne Foundation, which had operated for 22 years as a private foundation, becoming a fund in the Idaho Community Foundation. Everything the Dufresnes had originally intended – primarily support for education – will continue in perpetuity to be done.

Our first ever joint meeting of ICF's three regional advisory panels yielded many suggestions for refinements to our grant making process which should make it even more effective in the future.

Moving beyond the priorities set in last year's report, the Foundation's permanent endowment continued to grow as a result of the generosity of donors in each region of Idaho. As examples, in Southwestern Idaho, significant growth came from the Dufresne Foundation addition. In the Eastern Region, a donation of closely held stock by Ralph and Mary Lynn Hartwell created a new fund which will approximate \$309,000 and will benefit a wide variety of programs in Idaho Falls. In the Northern Region's Kootenai County, the Herbert McAvoy Fund continued to grow as a result of additional distributions from Mr. McAvoy's estate. The fund now totals approximately \$831,000 and will support educational projects in Kootenai County.

Our most significant grant making activity resulted from our continued partnership with the J.A. and Kathryn Albertson Foundation, the great benefactor of education in Idaho. The Albertson Foundation provided a \$750,000 special project fund within ICF, to be used in its entirety during 1997 for projects of as much as \$25,000 aimed at enhancing education – primarily K-12 – in Idaho's schools. These funds were divided equally among our three regions, and have funded a wide variety of creative projects. Examples include a children's theater latchkey program in Clearwater Valley schools in Kooskia, constructing a learning greenhouse for the ag science classes at A.W. Johnson Elementary School in Firth, and purchasing keyboards for the music programs in grades K-12 for


FOUNDING DONORS

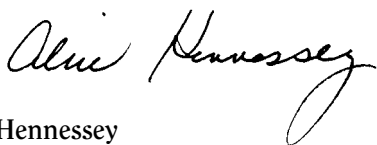
students of the Horseshoe Bend School District. We are delighted that the Albertson Foundation will continue its grantmaking partnership with the Idaho Community Foundation in 1998.

ICF's leadership changed in 1997 as John Fery, our founding chairman, transitioned to chairman of the Asset Development Committee. We are very grateful for the strength of his resolve in our early years and for the energy he continues to provide to the Foundation today.

John St. Clair of Idaho Falls, one of our founding directors, retired from the board, but continues as a member of the Eastern Region Advisory Panel. Don Atkinson of Ketchum, Ford Elsaesser of Priest River, and Ralph Hartwell of Idaho Falls became directors in 1997. We deeply appreciate the dedication of all our volunteer leaders.

Those of us who work closely with the Idaho Community Foundation become more enthusiastic each year about the contribution ICF can make to the quality of life in Idaho. GATHERING funds from donors – helping them achieve their charitable objectives. GROWING the funds through a prudent investment process. GRANTING the funds for a wide variety of worthwhile projects. What could be more satisfying – and more meaningful to Idaho?


Park Price III
Chairman


Alice Hennessey
President and Executive Director

The Idaho Community Foundation owes its existence to the foresighted individuals, corporations and organizations which joined together to create and endow the Foundation. Our Founding Donor campaign concluded December 31, 1992. We are pleased to give continuous recognition to the vision and generosity of those who supported the Foundation in its first stages of growth. Many of these donors have made additional contributions to the Foundation in subsequent years.

MAJOR FOUNDING DONORS

(Gifts of \$250,000 or more)

J.A. and Kathryn Albertson	Northwest Area Foundation	*Earl C. Reynolds Jr.
Donald and Gretchen Fraser	Ethel B. "Stevie" Rawlinson	J.R. Simplot

LEADERSHIP FOUNDING DONORS

(Gifts of \$100,000 or more)

Albertson's Inc.	Daugherty Foundation	Warren E. McCain
Harry Bettis	John B. and Delores L. Fery	Arthur and Jane Oppenheimer
Boise Cascade Corporation	Lewis Hower	U.S. Bank
**Boise Family YMCA	G. Nicholas and Sara Ifft	The Whittenberger Foundation
Charles Stewart Mott Foundation	Sara M. Maas	Miles and Virginia Willard

FOUNDING DONORS

(Gifts of \$25,000 or more)

Arthur Andersen LLP	Richard M. and Mary B. Hormaechea	Bob and Carol Reed
Amalgamated Sugar	Idaho Power Company	Tom, Sheila, John and Joy Richards
**Boise Philharmonic Association, Inc.	Intermountain Gas Industries Foundation	Jim and Bette Roper
Joan Chesbro	Kenlon P. and Carol J. Johnson	John Roper
Jim and Barbara Cimino	D. Whitman and Paula Jones	Carmelita G. Spencer
Robert and Mary Evans	Key Bank of Idaho	The Terteling Company, Inc.
Roger and Sybil Ferguson	H.F. and Colleen Magnuson	Harry B. Turner
First Security Bank of Idaho, N.A.	Merrill Lynch & Co. Foundation	Union Pacific Foundation
Global Travel, Inc.	Park Price Motor Company	U S WEST Communications
Linda Grable-Curtis	David and Vaniece Petso	Wells Fargo Bank (formerly First Interstate Bank)
Green Giant/Pillsbury	Potlatch Corporation	
Hecla Mining, Inc.	Robert and Dorothy Rebholtz	
Tom and Alice Hennessey		
William R. Hewlett		
Hewlett-Packard Company		

* Denotes a deferred gift

** Denotes an agency fund established to benefit the organization

*Jane & Arthur
Oppenheimer*



Each year the Idaho Community Foundation has received support, advice, and volunteer help from many people throughout Idaho. ICF's FRIEND OF THE FOUNDATION award recognizes truly outstanding assistance to the Foundation.

The 1997 honorees were Jane and Arthur Oppenheimer of Boise. Jane is descended from the pioneer Falk family, who were leaders in Idaho's early development. She and Arthur – a New Yorker – met in Europe while Arthur was an Army officer and Jane was serving with the Red Cross during World War II. Arthur subsequently became an enthusiastic Idahoan. Jane, Arthur, and their children continue the family's tradition of leadership in many aspects of Idaho life.

When ICF was just being formed, the Oppenheims didn't wait for a request. They came to ICF and asked how to establish a fund in the Foundation and subsequently became creators of the first fund established by individuals in ICF. This fund now exceeds \$150,000 in value. It is advised by Jane and Arthur, and since distributions started in 1991 it has been the source of \$38,000 of grants for charitable projects.

Arthur has devoted many hours of service as a member of the Southwestern Region Advisory Panel, reviewing all grant proposals received from the Southwestern Region, and recommending recipients for approval by the ICF board. And the Oppenheims recently named ICF in their planned giving, thus becoming members of our Legacy Society. We are pleased and honored to have had Jane and Arthur's support and encouragement since our beginning. The Friend of the Foundation award has allowed us to express our appreciation.

PREVIOUS RECIPIENTS:

1995 John Chapman, Hailey

1996 Miles Willard, Idaho Falls

The Idaho Community Foundation is a public charity established in 1988 and funded with private donations. It fulfills its mission of improving the quality of life for all Idahoans – forever – by attracting, pooling, and managing a collection of charitable endowed funds from which the earnings are distributed to nonprofit organizations as grants.

Endowment of the Foundation has grown to \$17.7 million, and ICF has issued more than \$4.7 million in grants since grant making began in 1990. Total assets, which vary from year to year depending upon the amount of special project funds being held or paid out by the Foundation, were \$19.4 million at year end 1997.

Community foundations are not new. The first was created in 1914 in Cleveland, Ohio, and more than 500 exist today. The Idaho Community Foundation is unusual, however, in being one of only 18 foundations serving a statewide mission (most others serve a city, county, or region.)

ICF is governed by a voluntary board of directors representing Idaho's diverse geography. (See page 32 for a list of directors.) Members serve for limited terms without compensation, and each director has had extensive personal involvement in civic affairs.

A truly statewide scope is ensured through the Foundation's bylaws, which provide that none of the state's three regions – Northern, Eastern, or Southwestern – can have less than 25% or more than 48% of the Foundation's membership or board.

A fund in the foundation is an account created by the contribution of a donor or group of donors. At year end 1997, ICF held 143 individual endowed funds. Each fund carries a name chosen by the donor or donors. That name and the guidelines established when the fund is created become its distinguishing characteristics. (See page 18 for a complete list of ICF funds.)

Anyone can create a Foundation fund. Individuals, companies, non-profit organizations, and other foundations have made gifts – both large and small. Donors have seen the efficiencies of benefiting the community of Idaho by pooling funds for more economic administration and greater investment return. (See page 6 for options in the creation of funds.)

A person need not be wealthy to establish a “named fund” in the Foundation. Such a fund can be established with a minimum contribution of \$5000 in assets (or a pledge payable within a maximum of five years.) Any donor can add any amount to their own, or to other established funds, as it suits personal or tax planning goals.

ICF makes grants to a wide variety of nonprofit groups. (See page 18 for a breakdown of grants by funding category.)

Charities statewide benefit from Foundation giving. Nearly 300 separate charitable activities in all of the state’s 44 counties have received grants from ICF. (See page 9 for a review of 1997 grants, listed by county.)

The Foundation has adopted the Total Return Concept (TRC) for the long-term management of its endowment assets.

Under the TRC, asset values at the beginning of the period, plus income, plus appreciation of the assets during the period (total market value), averaged over time, are taken into consideration in determining available grant dollars for each year’s distribution.

The TRC allows the Foundation to be consistently responsive to current needs while positioning its funds to maintain purchasing power and grant making capacity

THE TOTAL RETURN CONCEPT

over the long term. By smoothing the market volatility and adjusting the spending rate annually, the Foundation maintains relative stabil-

ity in the amount of funds available for charitable distribution and provides for increasing contributions over time.

In accordance with the Total Return Concept, the Foundation board establishes a funding level each year which bases distributions on the average market value for the prior 13 quarters. This spending level is independent of earnings in any one year and thus avoids detrimental fluctuations in dollars available for grant making.

The Foundation considers requests for grants from its unrestricted, advised, and field-of-interest funds on a regional basis. It makes grants to fund activities, services and projects of established 501(c)(3) charitable organizations or governmental units or their subsidiaries. (The grant making process is described in detail in a separate brochure, available on request.)

Assets are managed under the guidance of an investment committee established by the board. (See page 32 for a list of members of the investment and other standing committees.) The Total Return Concept box on this page explains the ICF investment philosophy. (A brochure providing further details of ICF’s investment and distribution policy is available on request.)

Donors give to a particular charity through ICF because the Foundation deals primarily with permanent endowment funds, so it offers donors perpetual oversight and assurance that earnings from their funds will always be used the way the donors intended, even as specific agencies may come and go. ICF provides economies of scale in the areas of fund management and grant making that may not be offered by any other charities. Also, an endowment in ICF provides a stream of income to a favorite charity as opposed to a lump sum payment which may be spent in a single year.

Serving donors is the starting point for the community foundation. Without development of an adequate donor base, service to the community through grant making activities cannot be provided.

The Idaho Community Foundation offers a wide range of options and services to donors:

■ UNRESTRICTED FUNDS:

The donor's gift provides the Foundation with maximum flexibility in meeting needs throughout Idaho. Earnings from an unrestricted fund are distributed at the discretion of ICF's board of directors, ensuring that the gift will always address current issues. Contributors of \$5000 or more have the privilege of naming their fund.

■ **ADVISED FUNDS:** Donors of \$25,000 or more may retain the privilege of participating in the selection of beneficiaries of their fund. While IRS regulations require that the final decision must rest with the Foundation's board of directors, the advice given by donors is fully considered in making grants from these funds.

■ **FIELD-OF-INTEREST FUNDS:** This option allows donors of \$25,000 or more to limit grants from their fund to organizations or projects within a particular charitable field, geographic area, or combination thereof. The Foundation determines the annual beneficiaries of these funds within the bounds of the donor's wishes.

■ **DESIGNATED FUNDS:** Donors of \$25,000 or more may ensure long-term annual support to the charitable organization chosen at the time of the fund's creation. Should the designated organization cease to exist or become dysfunctional, the Foundation has the contractual ability to redirect the income to achieve the donor's original intent.

■ **SCHOLARSHIP FUNDS:** Donors of \$10,000 or more may customize a scholarship fund to reflect the donor's intent to provide educational opportunities for graduates of certain schools, for studies in specific fields, or for programs at particular institutions of higher education.

■ **AGENCY FUNDS:** A charitable organization can protect its capital for the future and obtain the rewards of participating in a larger investment pool by placing its endowment with the Foundation. Such funds become the assets of the Community Foundation. Earnings from the fund are disbursed to the participating agency for use as its board of directors deems appropriate. Contributors may add to the fund with any amount, at any time.

■ **OPERATING ENDOWMENT FUNDS:** Earnings generated by these permanent funds help to offset the operating costs of the Foundation and reduce the administrative costs that might otherwise have to be assessed to other funds of the Foundation. Contributors of \$5000 or more have the privilege of naming their funds.

■ **ACORN SOCIETY ACCOUNTS:** Donors can make small donations to an account on a regular basis until attaining the minimum \$5000 required to create a named fund. The concept allows participation in the Foundation by those with a desire to do something of lasting significance for the Idaho community,

but who would prefer to make the contribution over time.

■ LEGACY SOCIETY/

DEFERRED GIFTS: Donors may choose to name the Foundation as beneficiary of a charitable trust, will, bequest, or other deferred giving instrument. Those willing to be recognized are named and thanked in the annual report as members of the Legacy Society. In many instances, the deferred gift donor receives benefits such as income or other use of property during his or her lifetime. Upon the donor's death, the remaining principal is transferred to the Foundation, and the earnings become available for charitable use as specified by the donor. Funds created through deferred gifts offer permanent recognition for the donor's philanthropic service to the community.

■ **SPECIAL PROJECT FUNDS:** The Foundation occasionally serves its statewide community by receiving and managing nonendowed funds to support special projects. Such nonendowed gifts differ from endowment in that the initial contribution, as well as the income earned while the assets are held, will be expended in the near future.

Services of the Idaho Community Foundation provide a variety of advantages to donors. The Foundation offers:

■ **TAX BENEFITS:** The Foundation qualifies as a public charity under federal regulations. Thus, gifts during a donor's lifetime or by bequest to the Idaho Community Foundation are accorded the maximum tax advantages allowed by law. In fact, major gifts to a community foundation may qualify for special tax considerations and, in some cases, may be a superior alternative to creating a private foundation. Potential donors should talk to an estate planning professional about their specific circumstances.

■ **FLEXIBILITY:** ICF works with donors and/or financial advisors to create a fund with terms and conditions designed to meet the specific requirements of each individual situation.

■ **ECONOMY AND CONVENIENCE:** There is no charge to create a fund in the Foundation, and a minimum of paperwork is required.

■ **EFFICIENCY:** One contribution to the Foundation can address a wide range of needs or interests and can benefit any or a number of charitable organizations. Also, the Foundation takes responsibility for all reports to the Internal Revenue Service and other governmental entities.

■ **EFFECTIVENESS:** The Foundation ensures good use of donor gifts through the professional grant research of the staff, the prudent and informed judgment of the regional advisory panels, and the oversight of the board of directors.

■ **GIVING OPTIONS:** Almost any asset of value can be considered for a contribution. The Foundation can accept cash, securities, property, closely held stock, or other property. Funds may be established with pledges payable within five years. Contributions can be made during the donor's lifetime and/or through deferred gifts and bequests.

■ **PERPETUITY:** The agreement drawn to create an endowment fund in ICF is surety that the Foundation will honor the donor's charitable intent to benefit the community into perpetuity.

■ **RECOGNITION:** Each grant from a fund is identified to the recipient by the name of the donor and/or the name of the fund designated by the donor. Donors can, of course, request anonymity with the assurance that their wishes will be respected.

■ **INVESTMENT EXPERTISE:** Donors are assured of professional management of the Foundation's assets by experienced investment professionals.

■ **ACCOUNTABILITY:** For investment purposes endowment funds are pooled in order to receive greater return as a result of lower costs. For accounting and reporting purposes, however, each fund is maintained as an individual, named entity, with separate tracking of earnings, pro rata fees, and grant disbursements. The Foundation's financial records are subject to ongoing oversight by

the board of directors and an annual independent audit.

■ **REASONABLE ADMINISTRATIVE FEES:** There is no minimum annual fee. Rather, most endowment funds are assessed an annual management fee of 1% of the fund's average annual market value. Endowment funds created by nonprofit organizations are assessed $\frac{1}{2}$ of one percent per year of the fund's average annual market value. For special project funds, which provide for the expenditure of the initial contribution and earnings, ICF assesses two percent of each contribution.

■ **INVESTMENT MANAGERS:** The investments of the Idaho Community Foundation are managed on a day to day basis by The Vanguard Group, Dietche & Field, Dimensional Fund Advisors, First Security Bank, N.A., and U.S. Bank.

■ **PROFESSIONAL SERVICES:** The Foundation receives legal counsel primarily from John McGown Jr., of Hawley Troxell Ennis & Hawley, Boise.

■ **INDEPENDENT AUDITORS:** The members of the Foundation have appointed Arthur Andersen LLP as the Foundation's independent public accountants.

■ **TAX STATUS:** The Internal Revenue Service has classified the Idaho Community Foundation as tax-exempt under Section 501 (c)(3) of the Internal Revenue Code and as a publicly supported charitable organization under Sections 509 (a)(1) and 170 (b)(A)(vi).

The Idaho Community Foundation was established to provide a deeper, broader source of funds for charitable projects in Idaho, and grant making is at the heart of the Foundation's activities.

The grant making process gives careful consideration to the wishes of donors who have established funds in the Foundation. Some donors have established *advised* funds which involve the donor each year in selecting beneficiaries of the fund. Others have established *field-of-interest* funds which limit grants to a specific geographic and/or charitable area. *Designated* funds benefit a specific charity or charities named by the donor at the time the fund is established. *Scholarship* funds enable the donor – in perpetuity – to provide educational opportunities for graduates of particular schools, or for studies in certain fields, or for programs at particular institutions of higher education. *Operating* endowment funds are established to help with ICF's ongoing administrative expenses. And *special project* funds are non-endowed funds from which both principal and interest are to be used in a relatively short time.

Unrestricted funds are those that come to the Foundation with no directions or restrictions from donors. They are especially valuable in providing ICF with flexibility in

Members of the Northern Region Advisory Panel meeting in Moscow to review grant applications.



Clockwise: Nancy Sue Wallace, Coeur d'Alene; Fred Noland, Grangeville; Bobbi Youmans (ICF staff), Boise; Stan Wood, Coeur d'Alene; Colleen Mahoney, Lewiston; and JoAnn Thompson, Moscow.

responding to changing community needs. Unrestricted funds are also useful in allowing the Foundation to reach into parts of Idaho where very few charitable dollars are available to fund worthwhile projects.

Panel members serve on a volunteer basis and provide an informed local forum in which they weigh the pros and cons of competing grant proposals.

A separate brochure, available on request, provides details of the grant making process.

Critical to the success of the Foundation in wisely awarding grants are the three regional advisory panels which provide ICF with grass roots knowledge and insight. The panels are composed of

people from the Northern, Eastern, and Southwestern Regions of Idaho—people who represent communities all across the geographic area of each region. Selected from outstanding community leaders,

these men and women are familiar with community needs and nonprofit organizations in their area and are experienced in analyzing grant applications. Panel members serve on a volunteer basis and provide an informed local forum in which they weigh the pros and cons of competing grant proposals. Members are diligent about maintaining fairness and objectivity in the review process. In 1997, the Idaho Community Foundation received approximately \$3.50 of requests for each dollar available to be granted. It was the regional advisory panels who had the task of making tough choices with limited resources, striving to make the best possible grant recommendations for the final approval of the ICF board of directors.

The Foundation expresses deep appreciation to those individuals listed on the inside back cover who served as members of the regional advisory panels in 1997.

1997 Grants

MULTIPLE COUNTIES

✓4-H Clubs of Gooding and Shoshone, \$2,920 to purchase educational life skills curriculum for after-school programs.

*Idaho Assistive Technology Program, Moscow, \$530 to guarantee loans to disabled individuals to purchase assistive technology devices.

*Idaho Commission for the Blind and Visually Impaired, Boise, \$1,000 for operating needs.

*Idaho Peace Officers Memorial, \$1,295 for expenses associated with constructing a memorial in honor of peace officers killed in the line of duty.

*Idaho Public Television, Boise, \$3,000 for operating needs.

✓Idaho State 4-H, Moscow, \$4,500 to support the 4-H Wildlife Habitat Evaluation program and contest.

Idaho Theater for Youth, Boise, \$5,000 to help sponsor a statewide program targeted at rural youth.

*Idaho Theater for Youth, Boise, \$139 for operating needs.

Idaho Special Olympics, Boise, \$2,500 to support the 1998 Summer Games.

Idaho State Historical Society, Boise, \$2,100 to create an educational trunk about the Lewis & Clark expedition. The trunk will travel to schools throughout Idaho.

*National Multiple Sclerosis Society, Idaho Chapter, \$230 for assistance to victims of multiple sclerosis.

*Nature Conservancy, Bellevue, \$500 for operating needs.

*Northwest Coalition Against Malicious Harassment, \$24,000 for operating needs of the Idaho Human Rights Network, a state-wide community-based organization, to address the problem of bigotry.

✓Idaho State University—Department of Physics, Pocatello, \$4,868 to sponsor science demonstrations for rural elementary schools.

✓Junior Achievement of the Inland Northwest, Spokane, \$5,000 to support the Workforce Readiness program in Coeur d'Alene schools.

ADA COUNTY

Assistance League of Boise, Boise, \$5,000 to provide new school clothing for needy elementary students.

*Ballet Idaho, Boise, \$2,500 for operating expenses.

Boise City Arts Commission, \$2,500 to help sponsor First Night Boise '98.

*Boise Public Schools Education Foundation, \$139 for operating needs.

✓Boise School District #1, \$4,900 to sponsor activities enhancements for latchkey program.

Boys and Girls Club of Ada County, Garden City, \$5,000 to support a fine arts program at the newly formed youth club.

*Central District Health Department, Boise, \$139 for the senior Meals-on-Wheels program.

*Community Youth Connection, Inc., Boise, \$2,185 for operating needs.

*Discovery Center of Idaho, Boise, \$139 for operating needs.

Eagle Academy, Eagle, \$2,000 to purchase a computer and software for library access.

✓Eagle Elementary School, \$5,000 to purchase books for school library.

*Esther Simplot Performing Arts Academy, Boise, \$69,999 from a donor designated fund for operating needs.

*Family Wellness Center, Boise, \$139 for operating needs.

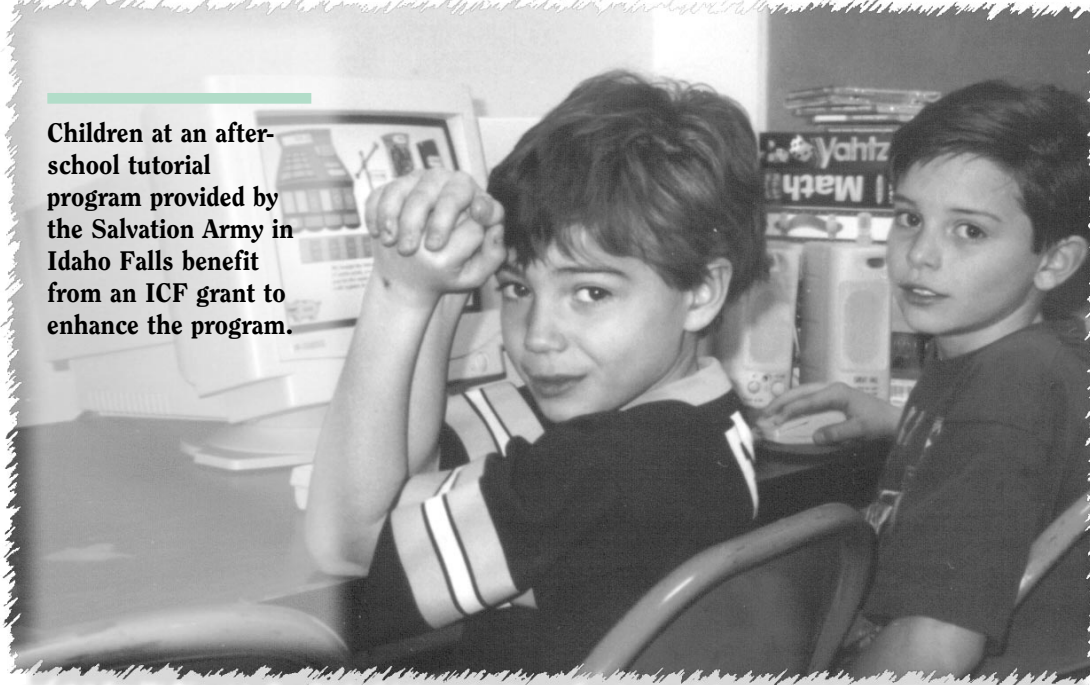
Starting on this page is a list of grants made by the Idaho Community Foundation in 1997. Grants made from unrestricted, advised, field-of-interest, designated, and special project funds are listed first and are grouped by county. These are followed by grants from scholarship and agency funds. An explanation of each fund type can be found on page 8. Grants from advised funds, designated funds, and special project funds are preceded by an asterisk.

The Idaho Community Foundation is especially appreciative of its partnership with the J.A. and Kathryn Albertson Foundation, whose generous contribution in 1997 made it possible for ICF to distribute a total of \$735,000 in grants for creative education projects in grades K-12. Grants were also made to early childhood and latchkey programs which had a strong educational component. The funds available for grants were divided equally among ICF's Northern, Eastern, and Southwestern Regions and were made in categories of up to \$5,000, \$5,000 to \$10,000, \$10,000 to \$15,000, and \$15,000 to \$25,000. Grants made from the J.A. and Kathryn Albertson Foundation Education Fund in the Idaho Community Foundation are designated in the following list by a check mark.

ICF also appreciates the support of The Whittenberger Foundation and The Terteling Company, which provided part of the funding for ICF's statewide rural playgrounds improvement project.

1997 Grants

Children at an after-school tutorial program provided by the Salvation Army in Idaho Falls benefit from an ICF grant to enhance the program.



✓Fort Boise Junior High Alternative School, Boise, \$2,498 to purchase materials for an Art Outreach Program to rural schools.

Idaho Black History Museum, Boise, \$2,000 to help move the museum building to a permanent location in Julia Davis Park.

*Idaho Botanical Garden, Inc., Boise, \$12,235 to construct a new entrance to the garden.

Idaho Botanical Garden, Inc., Boise, \$2,500 to extend the employment of an educational specialist.

Idaho Deaf Theater, Meridian, \$2,025 for operating needs.

*Idaho High School Activities Association, Boise, \$139 for its youth activities endowment.

*Idaho Humane Society, Boise, \$500 for operating needs.

*Idaho Museum of Mining and Geology, Boise, \$500 for operating needs.

✓Kuna Evening School, \$1,800 to provide scholarships for night school students seeking high school diplomas.

✓Kuna Joint District, \$4,950 to purchase instruments for the music programs.

*Learning Lab, Inc., Boise, \$1,000 for operating expenses.

*Log Cabin Literary Center, Boise, \$500 to support a new writers' residency program in schools.

✓Lowell Elementary School, Boise, \$5,932 to implement the Project Access reading program.

*Opera Idaho, Inc, Boise, \$2,500 for operating needs.

*Senior Programs of Boise City/Ada County, \$139 for operating needs.

✓St. Mary's Parish School, Boise, \$6,460 challenge grant to purchase books for the Accelerated Reader program (must raise additional funds to purchase software).

*St. Mary's Church and School, Boise, \$3,500 from a donor designated fund for operating needs.

*South Boise Little League, \$139 for operating needs.

Terry Reilly Health Services, \$2,000 to help provide a part-time dental hygienist at the Boise Dental Clinic.

Treasure Valley United Way, Boise, \$4,659 to help sponsor the "Success by Six" conference.

Ustick Elementary School PTO, Meridian, \$900 to purchase and install a kiln for the art class.

*Women's and Children's Alliance Crisis Center, Boise, \$139 for operating needs.

ADAMS COUNTY

Adams County Historical Society, New Meadows, \$2,305 to provide a structural engineering analysis of the historic depot.

Council Park Committee, Council, \$4,347 to help construct baseball and soccer fields.

✓Council School District, \$15,000 challenge grant to develop greenhouse learning center (must raise an additional \$4,000).

✓Meadows Valley School District, New Meadows, \$3,000 to purchase two indoor bleacher modules.

BANNOCK COUNTY

*Bannock Youth Foundation, \$1,000 to help create a suicide hotline through the Safe Place Program serving Pocatello youth in crisis situations.

✓Franklin Junior High School, Pocatello, \$8,000 to purchase video projection units for school departments.

✓Grace Lutheran Early Childhood Center, Pocatello, \$6,500 to create an educational study center for before and after school.

✓Idaho Fish & Wildlife Foundation, \$11,750 to develop an outdoor learning area next to Indian Hills School in Pocatello.

*Idaho State Civic Symphony, \$1,000 for expenses for the Summerstrings 98 concert series.

✓ISU - Early Learning Center, Pocatello, \$1,313 to purchase materials and equipment to expand classrooms.

1997 Grants

✓Lava Elementary School, \$451 for drug prevention program materials.

Lava Hot Springs Senior Citizens Center, \$500 to purchase a freezer for the senior meals program

Marshall Public Library, \$500 to purchase a software license for the special children's program at the library.

Pocatello Art Center, \$1,500 challenge grant to purchase a computer system (1:1 match required).

Pocatello Neighborhood Housing Services, \$2,250 challenge grant to help construct a combination meeting and play area at a low-income housing complex (1:1 match required).

Pocatello Women's Correctional Center, \$1,000 for supplies and equipment to implement an arts program at the center.

✓Shoshone-Bannock School District #512, Fort Hall, \$15,000 to implement special reading program for students and their parents.

Westside Players, Pocatello, \$2,000 to update the lighting equipment and sound system.

BEAR LAKE COUNTY

City of Bloomington, \$1,000 challenge grant for installation of a swing set with a sand base impact area (1:1 match required).

BENEWAH COUNTY

Benewah County Crisis Line, \$1,500 to underwrite the telephone costs for a 24-hour crisis phone line in St. Maries.

Plummer/Worley Friends of the Library, Inc., \$1,800 to purchase book check-out software and a public access computer.

✓St. Maries Middle School, \$1,000 to sponsor a speaker and purchase materials for the school-wide Space Week activities.

BINGHAM COUNTY

Aberdeen Public Library, \$500 challenge grant to purchase software, books, and materials for a special library program (1:1 match required).

✓A.W. Johnson Elementary School, Firth, \$12,278 to construct a learning greenhouse for ag science classes.

North Bingham County District Library, Shelley, \$2,000 to expand the collection of the newly remodeled library.

River Valley Singers, Blackfoot, \$1,815 challenge grant to purchase a keyboard (1:1 match required).

BLAINE COUNTY

Blaine County 4-H, Hailey, \$1,000 to purchase display materials for the 4-H Fair Building.

Blaine County Recreation District, Hailey, \$4,000 to improve the summer youth program.

City of Bellevue, \$1,000 challenge grant to purchase and install a swing set and a safe surface below (1:1 match required).

Company of Fools, Hailey, \$1,000 to help sponsor a special performance for grades K-5.

Hailey Police Department, Hailey, \$3,500 to purchase a computer and printer for the animal control department.

Sawtooth Community Garden Project, Ketchum, \$3,024 to purchase furnishings and equipment for the greenhouse and community room.

Silver Creek Community Services, Carey, \$2,000 to help refurbish the center for the needy.

Wood River Land Trust, Ketchum, \$1,500 to fund an issue of the organization's newsletter.

✓Wood River Middle School, Hailey, \$1,400 to sponsor a special after-school class for students with ADHD.

BOISE COUNTY

✓Basin Elementary School, Idaho City, \$2,100 to incorporate art processes into standard academic curriculum.

Garden Valley District Library, \$650 to purchase books on tape.

Horseshoe Bend District Library, \$1,193 to purchase a computer monitor, printer, and materials.

Horseshoe Bend Fire Protection District, \$2,000 to purchase fire fighting equipment.

✓Horseshoe Bend School District, \$5,964 to purchase musical keyboards for music programs K-12.

Placerville Ambulance, \$1,500 to purchase automatic chains for winter driving.

Placerville Fire Protection District, \$2,000 to purchase equipment and supplies.

BONNER COUNTY

✓Community Assistance League of Sandpoint, \$4,900 for materials for an art enrichment program at eleven elementary schools.

Gaia Foundation, \$1,000 to purchase garden supplies for a community youth garden in Sandpoint.

Memorial Community Center, Inc., \$2,500 to sponsor a youth outreach program in Hope.

BONNEVILLE COUNTY

Actors' Repertory Theater of Idaho, Inc., Idaho Falls, \$2,050 to purchase sound equipment.

*Big Brothers/Big Sisters of Southeast Idaho, Idaho Falls, \$1,000 for operating needs.

*Christian Counseling Services, Inc., Idaho Falls, \$750 to help provide mental health counseling to low-income working families.

✓District 91 Education Foundation, Idaho Falls, \$5,000 to create an alternative classroom for emotionally disturbed students.

Eastern Idaho Special Service Agency, Idaho Falls, \$1,025 to provide winter clothing for disadvantaged youth.

Eastern Idaho Special Service Agency, Idaho Falls, \$1,830 to purchase materials and equipment for life skill classes at the youth shelter.

1997 Grants

Family Assistance in Transitional Housing, Idaho Falls, \$250 challenge grant to install locked mail boxes for residents at the complex serving low-income families (2:1 match required).

*Good Samaritan Community Hospice, Idaho Falls, \$1,500 to underwrite the expenses for the recruitment and training of volunteers.

Habitat for Humanity - Idaho Falls, \$1,635 to purchase materials for a Habitat home.

✓Hillcrest High School, Idaho Falls, \$9,025 to purchase materials for a school/senior citizen folklore project.

*Idaho Falls Arts Council, \$1,142,350 for the renovation of the historic Colonial Theater and an adjacent building in downtown Idaho Falls into a facility for the performing and visual arts.

Idaho Falls Arts Council, \$2,308 for the Colonial Theater Renovation Project.

Idaho Falls Arts Council, \$2,500 to sponsor the printing of the next two issues of the "Arts Alive" newsletter.

✓Idaho Falls High School, \$13,500 to sponsor a Multi-cultural Week at the school.

Idaho Falls Nordic Ski Patrol, \$578 challenge grant to purchase a radio to be used in search and rescue activities (1:1 match required).

*Idaho Falls Opera Theater, \$1,000 to help underwrite the 1997-98 season.

*Idaho Falls Opera Theater, \$5,000 for operating needs.

*Idaho Falls Unitarian Fellowship, \$20,000 to underwrite a full-time minister.

✓Linden Park Elementary School, Idaho Falls, \$20,909 to purchase children's books for the library and classrooms.

✓Longfellow Elementary School, Idaho Falls, \$7,100 to purchase and operate a small scale broadcast system within the school.

✓Osgood Elementary School, Idaho Falls, \$4,405 to purchase materials and supplies for a hands-on science project.

✓Salvation Army of Idaho Falls, \$3,570 to enhance the after-school tutorial program for grades 1-12.

✓Swan Valley School District, Irwin, \$15,700 to purchase math, language arts and reading educational software.

✓Ucon Elementary School, \$6,180 to purchase books for the Accelerated Reader Program.

BOUNDARY COUNTY

North Bench Volunteer Fire District, Bonners Ferry, \$2,500 to purchase a self-contained breathing apparatus and helmets.

BUTTE COUNTY

✓Arco Elementary School, \$15,000 to purchase portable planetarium and equipment.

City of Arco, \$1,000 challenge grant to purchase and install new playground equipment for Bottolfsen Park (1:1 match required).

City of Moore, \$1,000 challenge grant to relocate the current swing set and install additional playground equipment (1:1 match required).

CANYON COUNTY

Caldwell Fine Arts Series, Caldwell, \$950 to sponsor artists-in-residence programs in two Caldwell Schools.

✓Centerpoint Alternative High School, Caldwell, \$2,200 to purchase equipment for the science department.

City of Caldwell-D.A.R.E./P.A.L., \$2,000 to purchase supplies and equipment for the drug prevention program.

City of Melba, \$1,000 challenge grant to update aging, broken, and unsafe playground equipment and provide a safer playing surface area (1:1 match required).

City of Wilder, \$1,000 challenge grant to purchase and install a tire swing for the city park (1:1 match required).

✓East Canyon Elementary School, Nampa, \$4,280 to purchase a mobile kitchen center for school.

✓Melba High School, \$2,500 to purchase books, videos, music tapes, and records for the library.

*Middleton Middle School, \$240 to purchase a map of North America and atlases for the geography class.

Nampa Neighborhood Housing, Inc., \$4,840 to purchase tools and a rental space for the Youth at Work program.

✓Nampa Education Foundation, \$970 to support the after-school activities program.

✓Northwest Children's Home Education Center, Nampa, \$18,000 to implement a special pre-tech program at the center for at-risk youth.

✓Notus School District #135, \$13,647 to provide training and follow up for a new multi-year placement program.

Third Judicial District CASA Program, Caldwell, \$2,000 to train twenty volunteers to be Guardians ad Litem, who represent abused children's interests during court proceedings.

Wilder Public Library District, \$2,000 to purchase books to update the juvenile collection.

CARIBOU COUNTY

Caribou County Sheriff's Office, Soda Springs, \$1,500 to help purchase emergency communication equipment for the elderly and disabled.

✓Hooper Elementary School, Soda Springs, \$4,000 to provide staff training for a special reading program.

Soda Springs Public Library, \$500 to purchase a magazine and periodical database for public access.

CASSIA COUNTY

City of Albion, \$1,000 challenge grant to purchase new playground equipment for the city park to meet safety standards (1:1 match required).

1997 Grants

Oakley Free Library District, Oakley, \$1,825 to purchase videos and video supplies.

CLEARWATER COUNTY

*Pierce School, \$200 to purchase a National Geographic Weather GeoKit.

✓Timberline High School, Weippe, \$17,600 to upgrade science equipment, supplies and laboratory space.

Weippe Public Library, \$1,500 to purchase large print books and books on tape.

CUSTER COUNTY

Challis Arts Council, \$1,800 to help defray the costs of four performing arts performances.

✓Challis Middle School, \$2,800 for a multimedia technology project.

City of Challis, \$1,000 challenge grant to purchase toddler swings and frames (1:1 match required).

City of Mackay, \$687 to purchase equipment and supplies for the summer recreation program.

Stanley Community Library, \$750 to purchase software for the library's public access computer.



Work starts on a project funded by ICF which will provide grass and an irrigation system for a new ball-park in Emmett.

*Gem Economic Development Association, Emmett, \$1,000 to help underwrite the Summer Concerts in the Park program.

*Gem Economic Development Association, Emmett, \$500 to purchase advertising for the Community Farmers' Market.

*Gem Youth Services, Emmett, \$5,000 to help build a skateboard park.

*Idaho Migrant Council, \$5,000 to help provide emergency assistance to migrant farmworkers and hire a teacher's aide to serve Gem County residents.

*Pratt Ranch Boys Home, Inc., Sweet, \$3,000 to install a new water supply system.

*West Central Highlands Resource Conservation & Development, Emmett, \$1,590 to repair the roof on the community center in Sweet.

*Western Idaho Community Action Program, Emmett, \$1,000 to help expand the building that houses the program serving low-income residents.

ELMORE COUNTY

City of Glenns Ferry, \$1,000 challenge grant to purchase new swings and a slide to meet safety standards (1:1 match required).

✓Early Childhood Special Education Preschool, Mountain Home, \$2,275 to purchase equipment for a dramatic play area at the preschool.

Elmore County Rescue, Mountain Home, \$2,000 to purchase rescue equipment and provide training.

Mountain Home Arts Council, \$1,375 to underwrite one-half of the fee for the Wizard of Oz touring production.

FREMONT COUNTY

Ashton Public Library, \$550 challenge grant to purchase a public access computer (1:1 match required).

City of Ashton, \$3,000 challenge grant to install a floor in the new shelter at the city park (1:1 match required).

Roxy Community Center, St. Anthony, \$2,000 to purchase spotlights and equipment for the children's theater.

✓South Fremont High School, St. Anthony, \$2,650 to enhance the Accelerated Reader Program.

GEM COUNTY

✓Butte View Elementary School, Emmett, \$5,000 to create a library for nightly reading program.

✓Emmett Middle School, \$2,000 to install a sound system in the music room.

*Emmett Public School Foundation-Project Graduation, \$1,000 to support a drug and alcohol free graduation celebration.

*Emmett Public Library, \$1,000 to purchase books and supplies for the children and teen sections.

*Emmett Public School Foundation, \$5,000 to purchase a portable lighting system for the middle school.

*Family Wellness Center, \$2,000 to support a mental health counseling program in Gem County.

*Gem County Ambulance, Emmett, \$2,000 to purchase rescue and extrication equipment.

*Gem County Recreation District, Emmett, \$2,000 to purchase grass and an irrigation system for the new ball park.

*Gem County Senior Citizens, Emmett, \$5,000 to help fund an addition to include a kitchen and bathrooms.

1997 Grants

GOODING COUNTY

✓Gooding School District #321, \$2,200 to purchase books for the Accelerated Reader program.

✓Idaho School for the Deaf and Blind, Gooding, \$24,000 to develop and implement a new assessment process.

✓Wendell High School, \$7,500 to purchase books for the Accelerated Reader program.

IDAHO COUNTY

✓Clearwater Valley Elementary School, Kooskia, \$8,750 to create an outdoor environmental education classroom.

✓Clearwater Valley Schools, Kooskia, \$15,000 to develop an after-school children's theater.

Cottonwood Jaycees, \$1,000 challenge grant to install playground equipment with an injury free ground cover for toddler and elementary-age children in the city park (1:1 match required).

✓Grangeville Elementary School District, \$919 to purchase fire ecology materials for K-2 classrooms.



Volunteers at the hospice in Salmon, which has benefited from previous ICF grants.

Kooskia Revitalization, \$1,000 toward the installation of interpretive signage at Kooskia's new welcome center.

✓Salmon River Schools, Riggins, \$7,500 to implement the "Arts Moms" program in grades K-12.

✓University of Idaho - Cooperative Extension System, Grangeville, \$14,744 to support after-school and year-round enrichment and tutoring programs.

JEFFERSON COUNTY

Lewisville Public Library, \$500 to purchase new books.

Menan-Annis Public Library, \$385 to purchase CD Rom reference materials.

✓Rigby School District #251, \$3,135 to purchase equipment for gifted and talented class.

✓Ririe High School, \$25,000 to purchase and install theatrical lighting system for the school auditorium.

✓Roberts Middle School, \$4,500 to purchase musical instruments for music program.

Roberts Quick Response, \$900 to purchase a washer and dryer to launder uniforms and blankets.

JEROME COUNTY

Fifth Judicial District CASA Program, Jerome, \$4,125 to provide volunteer training.

✓Jefferson Elementary School, Jerome, \$9,000 to purchase materials and supplies for special homework packets.

✓Valley School District, Hazelton, \$10,000 to purchase books for the Accelerated Reader program.

KOOTENAI COUNTY

✓Canyon Elementary School, Cataldo, \$4,873 to purchase state-approved playground equipment.

City of Spirit Lake, \$1,000 challenge grant to purchase materials for new wooden playground structures (1:1 match required).

✓Fernan Elementary School, Coeur d'Alene, \$3,600 to purchase connectors for classroom TVs.

✓Fernan Elementary School, Coeur d'Alene, \$4,695 to purchase materials for a special program for at-risk kindergartners.

✓Hayden Meadows Elementary School, Coeur d'Alene, \$3,863 to purchase sound and lighting equipment for the gym area.

1997 Grants

✓Hayden Meadows Elementary School, Coeur d'Alene, \$14,450 to support and expand the literacy acquisition program.

✓Holy Family Catholic School, Coeur d'Alene, \$15,070 to purchase math, science, and social studies materials and workbooks.

Idaho Youth Ranch/Anchor House, Coeur d'Alene, \$595 to purchase a desk-top copier.

✓Inland Northwest Lutheran Outdoor Ministries, Coeur d'Alene, \$1,800 for an environmental education program for elementary and middle schools.

✓Post Falls High School, \$5,000 to purchase research materials for three integrated classes.

✓Post Falls New Vision High School, \$3,925 to purchase supplies and equipment for a greenhouse at the alternative high school.

✓Seltice Elementary School, Post Falls, \$12,300 to purchase materials for a reading-at-home project for K-1st grade students.

✓Sorensen Elementary School, Coeur d'Alene, \$430 to purchase curriculum on victim/bully behavior.

✓Sorensen Elementary School, Coeur d'Alene, \$5,146 to support three programs focusing on reading and literacy.

✓Spirit Lake Elementary School, \$7,890 to purchase a reading program for K-2nd grades.

LATAH COUNTY

City of Troy, \$1,000 challenge grant to rehabilitate the stream bank adjacent to the city park for safety reasons (1:1 match required).

✓Troy Elementary School, \$9,500 to implement a living history program at schools in Troy and Juliaetta.

LEMHI COUNTY

✓Brooklyn School, Salmon, \$2,813 to purchase materials for a special environmental education class.

✓Idaho Fish & Wildlife Foundation, \$6,245 to purchase materials and equipment for an environmental education project in Salmon.

Leadore EMTs, \$3,000 to purchase an oxygen delivery system.

*Lemhi County Humane Society, \$500 to help replace the ceiling at the animal shelter.

*Patterson Elementary School, May, \$100 for a subscription to the Scholastic Network.

✓Pioneer Elementary School, Salmon, \$3,363 to purchase materials for an early literacy intervention program.

✓Salmon Junior High School, \$4,946 to purchase research materials.

Salmon River Industries, Salmon, \$3,250 to help purchase a die-cutting machine for this training organization serving the mentally handicapped.

LEWIS COUNTY

✓Highland Joint School District #305, Craigmont, \$19,195 to purchase Accelerated Reader Program materials and books for children's library.

✓Highland Joint School District #305, Craigmont, \$5,000 to implement an Artist-in-Residence program for the district.

Lewis County Historical Society, Craigmont, \$1,600 to purchase and install tombstones for abandoned graves in the historic cemetery.

✓Orchards Elementary School, Lewiston, \$5,000 to purchase traveling Lego Technology Lab for the fifth and sixth grade classes.

MADISON COUNTY

✓Adams Elementary School, Rexburg, \$5,000 to help develop a community parent education resource center.

✓Lincoln Elementary School, Rexburg, \$5,000 to implement the Accelerated Reader Program.

✓Madison County Senior Citizens, Inc., Rexburg, \$1,540 from a donor designated fund for operating needs.

✓Madison School District, Rexburg, \$10,000 to support community-wide project to improve early literacy.

MINIDOKA COUNTY

✓Memorial Elementary School, Rupert, \$2,300 to underwrite transportation costs and entrance fees for monthly field trips.

*St. Nicholas Catholic School, Rupert, \$840 from a designated fund for operating needs.

NEZ PERCE COUNTY

City of Peck, \$1,000 challenge grant to install a city park watering system utilizing Big Canyon Creek instead of the city water supply (1:1 match required).

Interlink, Inc., \$1,500 to purchase a computer and printer for the Lapwai satellite office serving homebound senior citizens.

✓Lewiston School District #1, \$24,450 to develop and film reading programs for the local community access channel.

Northwest Children's Home, Lewiston, \$840 to purchase a roll-away dining table for the cafeteria.

Second Judicial District CASA Program, Inc., Lewiston, \$1,090 to print a public awareness campaign brochure.

ONEIDA COUNTY

✓Malad Elementary School, \$4,999 to purchase materials, software and training for a special reading program.

*Malad Elementary School, \$250 to purchase a U.S. map floor puzzle and accompanying materials.

Malad Valley Theater Guild, Malad, \$2,000 to purchase and install new stage backdrop curtains.

OWYHEE COUNTY

*Homedale Elementary School, \$125 to purchase desk-top maps.

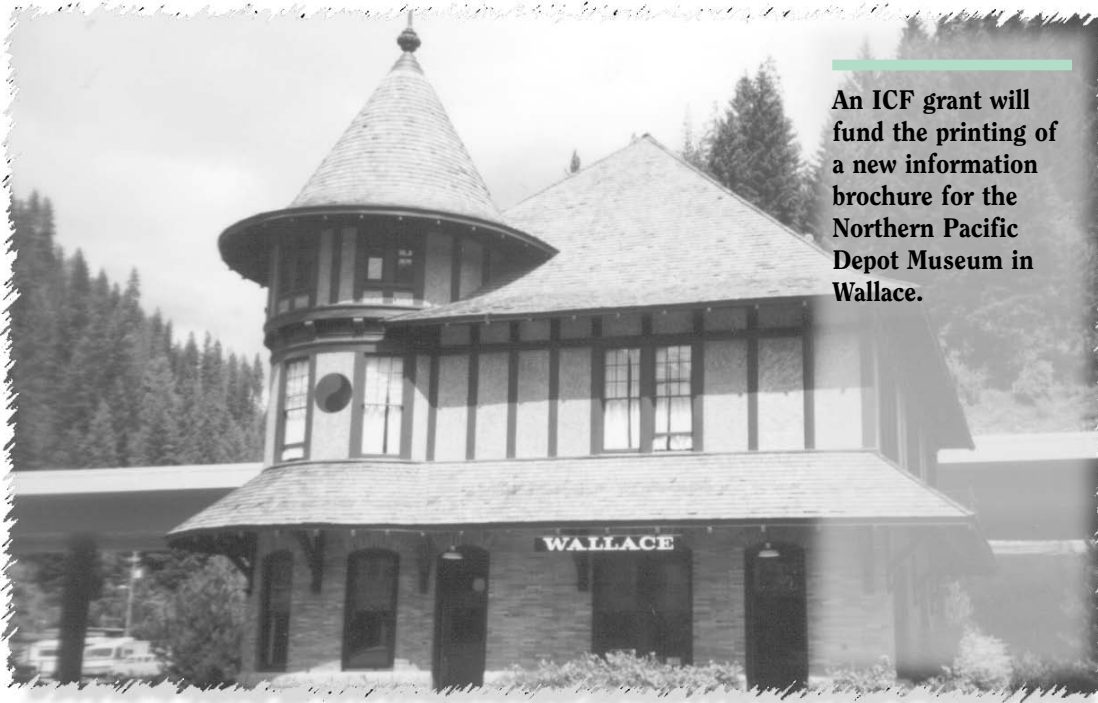
✓Homedale Junior-Senior High School, \$2,608 to purchase uniforms for the high school marching band.

✓Marsing School District, \$5,000 to develop a special science curriculum focused on Mars.

✓Marsing School District, \$4,000 to purchase a hands-on science station module for the middle school.

✓Marsing School District, \$12,000 for materials and expenses to start a latch-key program.

1997 Grants



An ICF grant will fund the printing of a new information brochure for the Northern Pacific Depot Museum in Wallace.

TETON COUNTY

City of Teton, \$1,000 challenge grant to repair existing equipment and purchase a new slide (1:1 match required).

City of Victor, \$1,500 to install a sprinkler system for the new city park.

*Tetonia Elementary School, \$250 to implement the Family Geography Program.

*Tetonia Elementary School, \$125 to purchase a Delta-Coyne kite and camera mount for science department.

PAYETTE COUNTY

✓New Plymouth School District, \$7,350 to purchase books for the Accelerated Reader program for the elementary school.

*Warren E. McCain Middle School, Payette, \$51,750 from a donor designated fund for projects at this school.

Western Idaho Community Action Program, Payette, \$2,430 to purchase ten vacuum cleaners for low-income, elderly individuals.

POWER COUNTY

City of Rockland and Rockland School, \$1,000 challenge grant to refinish and resurface the tennis courts and play area (1:1 match required).

✓Rockland High/Junior High School, \$467 to purchase three educational software programs.

SHOSHONE COUNTY

City of Kellogg, \$1,000 challenge grant to replace unsafe playground equipment in the main city park (1:1 match required).

City of Wallace, \$1,000 challenge grant to purchase and install playground equipment for several small parks throughout the residential area (1:1 match required).

Kellogg Public Library, \$980 to preserve the Bunker Hill Company photograph collection that was recently donated to the library.

✓Mullan School District #392, \$4,000 to develop a program to improve parenting skills.

Mullan School District #392, \$1,000 challenge grant to replace broken and worn out equipment at the only playground in the area, which is located at the school (1:1 match required).

Northern Pacific Depot Museum, Wallace, \$640 to print a new information brochure.

Silver Valley Habitat for Humanity, Kellogg, \$1,000 to purchase building materials for a Habitat home.

✓Sunnyside Elementary School, Kellogg, \$6,900 to implement health related curriculum in kindergarten classes.

Wallace District Mining Museum, \$775 to purchase a copy machine and spare cartridge.

✓Wallace School District, \$8,000 to underwrite expenses associated with the School to Work Initiative.

TWIN FALLS COUNTY

*American Red Cross-Magic Valley Chapter, Twin Falls, \$500 for operating needs.

Born To Read, Kimberly, \$1,000 to provide information to new parents on the importance of reading.

Castleford School District, \$4,670 to purchase two welders for the Ag Science and Technology program.

City of Murtaugh, \$1,000 challenge grant to install a round shelter to house eight picnic tables (1:1 match required).

1997 Grants

*College of Southern Idaho, Twin Falls, \$3,000 to support the college's program for the deaf, its meals-on-wheels program, and operating needs.

*First Church of Christ Scientist, Twin Falls, \$500 for operating needs.

✓Kimberly Elementary School, \$2,400 to create a "take home library" for grades K-1.

✓Lincoln Elementary School, Twin Falls, \$5,000 to implement the Accelerated Reader program.

✓Magic Valley High School, Twin Falls, \$20,000 to purchase library resource materials for the alternative school.

*Magic Valley Symphony Orchestra, Twin Falls, \$1,000 for operating needs.

*Pets for People, Twin Falls, \$500 for operating needs.

✓Scottish Rite Learning Clinic, Twin Falls, \$3,190 to provide teacher training for ADHD model in Cassia County schools.

Twin Falls County Ike Kistler Safe House, Twin Falls, \$2,000 to fund a parenting program for low-income families.

Twin Falls Public Library Foundation, Twin Falls, \$2,355 to purchase resource material for the children's department.

VALLEY COUNTY

Cascade Rural Fire and Emergency Medical Services, \$2,000 to purchase emergency medical equipment.

McCall Memorial Hospital Foundation, \$1,075 challenge grant to purchase a manikin system for CPR training (must raise an additional \$1,060 to complete the project).

Shepherd's Home, McCall, \$5,000 to help provide start-up costs for the group foster home.

WASHINGTON COUNTY

Cambridge Community Library, Cambridge, \$1,500 to purchase a books on tape collection for young adult readers.

✓Cambridge Junior-Senior High School, \$5,830 to help purchase a portable shell to accommodate choral, band, and drama events at the school.

✓Weiser High School, \$15,000 challenge grant to purchase a greenhouse for the agriculture/science class (must raise an additional \$8,306 to complete the project).

OTHER GRANTS FROM ENDOWMENT:

*American Red Cross-Elko Chapter, \$500 for operating needs.

*American Lung Association of Nevada, Elko, \$500 for operating needs.

*American Red Cross-Goldstrike Chapter, Elko, \$500 for operating needs.

*Brigham Young University, \$1,000 for operating needs.

*Nature Conservancy-Nevada, \$500 for operating needs.

*Petetneet Academy, Payson, Utah, \$1,000 for operating needs.

*Primary Children's Hospital of Salt Lake City, \$500 for operating needs.

*Salvation Army of Elko County, \$500 for operating needs.

*United Negro College Fund, \$1,000 for operating needs.

*University of San Francisco, \$1,000 for operating needs.

AGENCY FUNDS:

Twenty-two nonprofit organizations have created endowment funds within the Idaho Community Foundation in order to benefit from the perpetuity, administrative efficiencies, cost effectiveness, and access to investment expertise provided by participation in ICF's pooled funds. Disbursements are made from these funds to the organizations which created them and are used at the discretion of the board of directors of each charitable agency. Many organizations request that no distributions take place until the fund reaches a specific market value.

1997 distributions were as follows:

Boise Family YMCA, \$15,541

Boise Philharmonic Association, \$5,313

Caldwell Fine Arts Series, \$330

First Presbyterian Church of Idaho Falls, \$2,158

Idaho Falls Ducks Unlimited Trust, \$249

Idaho School for the Deaf & Blind, \$1,137

Nampa Public Library, \$842

United Way of Ada County, Inc., \$5,967

SCHOLARSHIP FUNDS:

Albertson College of Idaho, \$530 for a designated scholarship.

Boise State University, \$29,121 for designated scholarships.

College of Southern Idaho, \$835 for a designated scholarship.

Eastern Idaho Technical College, \$2,340 for designated scholarships.

Idaho State University, \$13,130 for designated scholarships.

Northwest Nazarene College, \$290 for a designated scholarship.

Treasure Valley Community College, \$1,070 for a designated scholarship.

University of Idaho, \$19,820 for designated scholarships.

Utah State University, \$500 for a designated scholarship.

The flexibility of the Idaho Community Foundation allows each donor to create a fund that fits his, her, or that organization's particular interests. Individuals, private foundations, corporations, and charitable organizations can establish funds through charitable trusts, by will, or through the transfer of assets.

Funds created in the Foundation ensure Idaho-based wealth remains in Idaho, working continually through the ICF grant making process to improve the communities about which we all care. Fund creators may also structure their funds so that some of the distributions go to charitable projects outside Idaho.

Funds in the Idaho Community Foundation as of December 31, 1997, are described on the following pages. The list of 1997 grant recipients and purposes for grants can be found beginning on page 9 of this annual report.

The date after each fund name indicates the year in which the fund was established.

Funds of the

UNRESTRICTED FUNDS

The Idaho Community Foundation contains the following unrestricted funds with endowments of \$500,000-\$999,999:

J.A. and Kathryn Albertson Fund-1990

The Albertson family gift creating this fund was earmarked for broad charitable giving throughout Idaho.

The Idaho Community Foundation contains the following unrestricted funds with endowments of \$100,000-\$249,999:

Charles Stewart Mott Charitable Fund-1990

This fund was created as a challenge grant in recognition of the importance that unrestricted giving has for a responsive community foundation.

The Idaho Community Foundation contains the following unrestricted funds with endowments of less than \$100,000:

Amalgamated Sugar Company Charitable Fund-1992

The earnings from this fund will be distributed to meet the most critical needs of the state in years to come.

Campion Family Fund-1995

This Ketchum family established their fund in collaboration with the Campion Foundation and the Helen K. and Arthur E. Johnson Foundation of Colorado.

Tom and Alice Hennessey Fund-1992

Charitable giving from this fund is directed at meeting needs statewide.

Whit and Paula Jones Fund-1991

This fund is designed to give maximum flexibility to meet community needs as they change over time.

Thomas and Sheila Richards and John and Joy Richards Fund-1991

This family fund is used for projects selected by the regional advisory panels of the Foundation.

Alice and John Roper Fund-1992

This fund continues the tradition of support for Idaho established by this Twin Falls couple.

Whittenberger Foundation Fund-1988

This fund was established through a challenge grant when the Foundation was created. The fund was designed to enhance unrestricted charitable giving and continues to do so.

Community Trust Fund-1990

This fund was created by the Idaho Community Foundation to receive contributions of both modest and great amounts from a wide range of donors. Contributors to this fund are assured that the earnings will be used in perpetuity to meet charitable needs of Idaho.

Donors who contribute \$5,000 or more to the Community Trust Fund can elect to name their fund. The Community Trust Fund currently contains the following named funds:

Elton Earle Beamish Memorial Fund-1996

Don J. Black Memorial Fund-1996

1997 contributors:

Britt and Cynthia Bambic in memory of Ryan Hennessey, Trudi Bolinder, and Irene Aitchison

Louise F. Beatty

Debbi Pierce

Debbi Price

Cally Galpin Fund-1997

William and Glenn C. Janss Fund-1990

Gordon C. and Frances B. Randall Memorial Fund-1989

Ray and Linda Stark Fund-1997

Foundation

Donors who choose not to name a fund or contribute less than \$5,000 to the Community Trust Fund receive recognition in the year the contribution is made.

1997 contributors:

Tom and Alice Hennessey
A.E. "Bergy" Bergesen
John B. Fery
Margaret Gigray
Nick and Sara Ifft
Irv and Trudy Littman
Malad Valley Theater Guild
Roger A. Martell
Pamela L. Massey
Park Price, Jr.
Park and Sharon Price

Memorial contributions to the Community Trust Fund are accepted from individuals and/or corporations wishing to honor the memory of those who have passed away. These gifts provide recognition to the person so memorialized, as well as contribute to a lasting legacy to the Idaho community.

Memorials to the Community Trust Fund during 1997 were given in honor of:

Judy Ayre
Don Baranco
Trudi Bolinder
Joyce Ann Briggs
Frances E. "Betty" Nixon Carlsen
Georgia Davidson
Bernice Fletcher
George E. Ganz, Jr.
Bette Gibson
Bill Graeber
Ryan Hennessey
Frank Hoffman
Stan Hovorka
William B. Hutchinson
Emma May Batt Fisk Kurze
Earl F. Lovan
William Vern McCann, Sr.
Jack E. Morgan
Cameron N. "Laddie" Mullard
Raymond Neef
James Edward Phelps
Boyd E. Pond
Alvin H. Ricken
Hugh White
Jeanne Wolden
Arlie L. Woods
Cecile Zohn

ADVISED FUNDS

The Idaho Community Foundation contains the following advised funds with endowments of \$1,000,000-\$2,500,000:

Bernie and Warren McCain Fund-1996

Created by this long-time Idaho couple to provide a permanent contribution to the quality of life in Idaho, the donors and their daughters will recommend grant recipients beginning in 1998.

The Idaho Community Foundation contains the following advised funds with endowments of \$500,000-\$999,999:

Archie B. Teater Fund for the Handicapped-1994

This fund was established with the transfer of assets, primarily in the form of artwork, from an existing non-profit organization created at the request of the late artist. Donations from the fund will benefit the needs of handicapped youth in Idaho.



Ralph & Mary Lynn Hartwell

Ralph and Mary Lynn Hartwell built a successful insurance and real estate business. Sale by ICF of the Hartwells' gift of stock in their business has created a fund which will benefit worthwhile Idaho Falls area projects in perpetuity.

The Idaho Community Foundation contains the following advised funds with endowments of \$250,000-\$499,999:

Ralph and Mary Lynn Hartwell Family Fund-1997

This fund was established by the Idaho Falls couple with a gift of closely-held stock. Mr. and Mrs. Hartwell and their children retain the privilege of recommending grant recipients from the fund during their lifetimes.

Albert H. and Juanita F. Huber Fund-1995

Established by this Jackpot, Nevada, couple to ensure that their life-long commitment to charitable activities will continue far into the future. Upon the death of the donors, distributions from this fund will be designated to benefit a wide variety of organizations in Idaho and Nevada.

The Idaho Community Foundation contains the following advised funds with endowments of \$100,000-\$249,999:

Harry Bettis Fund-1991

The fund's purpose is to support charitable activities throughout Idaho that meet current and emerging needs. Upon the death of the advisors, this fund will be placed in the unrestricted endowment of the Foundation.

John B. and Delores L. Fery Fund-1989

Advice on use of the fund will continue during the couple's and their children's lifetimes. Upon the death of the advisors, this fund will be placed in the unrestricted endowment of the Foundation.

Funds of the

Arthur and Jane Oppenheimer Fund-1988

This was the first fund created in the Foundation by individuals. The donors provide advice in preparation for the distribution of grants.

Rogers and Hazel Rose Fund-1995

Established by this Idaho Falls couple, distributions from the fund benefit charitable needs in Eastern Idaho.

The Idaho Community Foundation contains the following advised funds with endowments of less than \$100,000:

Anonymous Fund III-1992

The family creating this fund requested that no disbursements take place until it reaches a specified amount.

Hormaechea Family Fund-1992

Advice on distribution from this fund, established by Richard M. and Mary B. Hormaechea, is given by the donors. Upon their death, funds will be transferred to the unrestricted endowment.

Merrill Lynch & Co. Foundation, Inc. Fund-1991

Distributions from this fund are made with the advice of the resident vice president of the company's Boise office.

David and Vaniece Petso Family Fund-1991

At the donors' request, no disbursements are being made until the fund reaches a predetermined level.

James A. Pinney Memorial Fund-1996

Established by Ann Erstad to ensure recognition of her great grandfather's contributions to the early development of Boise with his 1881 election as the city's ninth mayor and to his development of cultural programs in the region through construction and operation of the Columbia and Pinney Theaters. Grants from the fund will be made to theater arts groups in the Southwestern Region when the fund reaches a predetermined level.

1997 contributors:

Mike and Theresa McLead in memory of Bette Gibson, Larry McEntee, and William Tregoning

Robert and Dorothy Rebholtz Fund-1992

The donors chose the Foundation to carry out charitable activities on their behalf while retaining the ability to help select its beneficiaries.

Harold E. Rumsey Fund-1994

The donor and family members will recommend grant recipients beginning in 1998.

Guy H. Shearer Memorial Fund-1995

Mary Jane and Jim Kinney established this fund to ensure recognition of her father's contribution to development of Twin Falls County as founder of Filer State Bank in 1908 (merged with Idaho First National Bank).

The Terteling Company, Inc. Fund-1990

Advisors to this fund depend on advice of the regional advisory panels in making distributions.

Lane Williams Memorial Fund-1993

This fund will support organizations providing sports and recreation opportunities for youth in Blaine County. No disbursements will be made until a specified amount has been attained.

1997 contributors:

James F. Covington
Regina Dunbar
Everen Clearing Corp.
Wally Kelly
Mr. and Mrs. Marland Larson
Peak Nutrition

DONOR DESIGNATED FUNDS

The Idaho Community Foundation contains the following donor designated funds with endowments of \$1,000,000-\$2,500,000:

Esther Simplot Performing Arts Academy Endowment Fund-1992

Earnings from this endowed fund established by J.R. Simplot are disbursed regularly to defray operating costs of the Academy named for his wife.

Warren E. and Bernie McCain Fund-1990

Proceeds from the fund are made available to the Warren E. McCain Middle School in Payette for use at the discretion of the school's administrators.

The Idaho Community Foundation contains the following donor designated funds with endowments of less than \$100,000:

Board Brothers Fund-1993

Proceeds from this fund will be used for structural maintenance of the historic Immanuel Episcopal Church in Hailey. No disbursements are being made until a specified amount has been attained.

Robert L. Cook Memorial Fund-1997

Created to memorialize a long-time resident of Idaho Falls and his support of needy individuals during the holiday season, grants from this fund will be made to the Idaho Falls Goodfellows.

Robert P. and Mary H. Evans Fund-1992

Proceeds from this fund are designated for distribution in support of the St. Nicholas Catholic School in Rupert.

Roger and Sybil Ferguson Fund-1990

Madison County Senior Citizens are beneficiaries of this gift with proceeds disbursed annually to the organization's board for use in meeting critical needs.

Rogers and Hazel Rose Fund for KISU Public TV-1997

The fund was created by this Idaho Falls couple to provide permanent annual income to this charitable organization.

Gilbert C. and Jane B. St. Clair Fund-1997

Created by Mrs. St. Clair as a memorial, in part, to her late husband, the earnings from this fund will be equally divided between All Saints' Episcopal Church in Boise and the Idaho Youth Ranch in Rupert.

Foundation

FIELD-OF-INTEREST FUNDS

The Idaho Community Foundation contains the following field-of-interest funds with endowments of over \$2,500,000:

Walter and Leona Dufresne Fund-1997

Created by the transfer of assets from a private foundation, earnings from the fund will be used to provide scholarships for worthy men and women in need of financial assistance, prevention of child abuse, crime prevention, promotion of the fine arts, the elimination of poverty, and the enhancement of scientific research.

The Idaho Community Foundation contains the following field-of-interest funds with endowments of \$500,000-\$999,000:

Herbert McAvoy Fund-1995

Established through a bequest by this Coeur d'Alene resident, the fund will benefit educational needs in Kootenai County beginning in 1998.

Ethel R. and Ronald Rawlinson Fund-1992

Established through a charitable remainder trust to continue the lifetime commitment to the Emmett area of Dr.

and Mrs. Rawlinson, grants are made in support of charitable organizations and activities that benefit Gem County.

The Idaho Community Foundation contains the following field-of-interest funds with endowments of \$250,000-\$499,000:

Donald W. and Gretchen C. Fraser Fund-1994

Established through a charitable remainder trust, the fund will continue the commitment of the Sun Valley couple to supporting charitable organizations that benefit Blaine County.

The Idaho Community Foundation contains the following field-of-interest funds with endowments of \$100,000-\$249,000:

Ifft Eastern Region Fund-1989

Established by G. Nicholas and Sara Ifft as one of the Foundation's earliest funds, grants from this fund are made in support of charitable organizations and activities in Eastern Idaho.

Sara Maas Fund-1995

Established through a charitable remainder trust, the fund will benefit worthwhile needs in Boise with preference given to programs supporting the arts.

Wendell P. and Barbara J. Marshall Fund-1994

The fund established by this Pocatello couple benefits charities in the Eastern Region.

Miles and Virginia Willard Fund-1992

Established by Mr. and Mrs. Willard, grants are to support youth services and/or arts organizations in Eastern Idaho.

The Idaho Community Foundation contains the following field-of-interest funds with endowments of less than \$100,000:

Albertson's Eastern Region Fund-1989

Established by the corporation as one of three challenge grants to each of the Foundation regions, this fund was the first to be matched on a dollar-for-dollar basis and now benefits charities in Eastern Idaho.

Albertson's Northern Region Fund-1989

Earnings from this challenge grant benefit charitable organizations in Northern Idaho.

Albertson's Southwestern Region Fund-1989

Earnings from this challenge grant benefit charitable organizations in Southwestern Idaho.

Walter Dufresne

Walter Dufresne was an automobile dealer in Boise for many years. Charities in Idaho will benefit in perpetuity as a result of the generosity of Walter and his wife, Leona. ICF regrets that her photograph is not available.

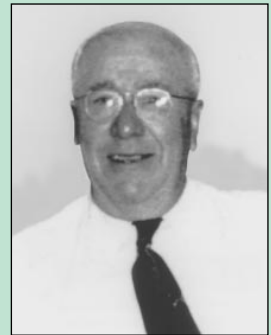


Photo courtesy of Idaho Historical Society

Assistive Technology Endowment Fund-1997

Created by the transfer of funds from an existing ICF special project fund, this endowment fund will ensure annual support for programs providing assistance to individuals with disabilities who need assistive technology devices.

1997 contributors:

Alliance Title & Escrow

J.V. and Paul Baldwin

J.D. and Rebecca Littlewood

Patricia Passey

Unity Christian Church of Boise

Leland D. Beckman Foundation Fund-1992

Established by the trustees of this private foundation in Idaho Falls, grants from this fund enhance charitable activities in the Eastern Region.

Chesbro Family Music Fund-1992

This fund is to support and enhance music in the Eastern Region under advisement of Joan Chesbro and her daughters during their lifetimes.

Jim and Barbara Cimino Fund-1992

Charitable organizations and projects in the Ketchum/Sun Valley area benefit from the generosity of this couple.

Daugherty Foundation Trust Fund-1989

Established by this Idaho Falls private foundation to take advantage of Idaho Community Foundation investment and grant making services, distributions from this fund support Eastern Idaho organizations.

Funds of the

SCHOLARSHIP FUNDS

The Idaho Community Foundation contains the following scholarship funds with endowments of \$100,000-\$249,999:

Lewis and Jeannette Hower Fund-1992

The fund was created to benefit Idaho students, preferably from the Emmett area, planning to major in journalism at the University of Idaho and/or music at Albertson College of Idaho.

Wood River Odd Fellows & Rebekahs Scholarship Fund-1996

Created by Alturas Lodge #13, I.O.O.F. and Snowdrop Rebekah Lodge #71 with the proceeds from the sale of their building, the fund will provide scholarships for graduates in the Wood River Valley who choose to attend a college, university, vocational or technical school in Idaho.

Jane Sandy Fund-1995

Established by transfer of a trust created in 1963, grants from the fund are made statewide in support of programs serving disadvantaged youth.

John and Carmelita Spencer Fund-1990

Established by Mrs. Spencer to memorialize her late husband, the fund supports charitable needs in the Northern Region.

Curtis Turner Memorial Fund-1992

Established by Harry Turner to ensure recognition of his father's contribution to the development of Twin Falls and the surrounding area, grants are made to charities in the Magic Valley.

Ed F. Winn Fund-1994

Established through transfer of a trust, grants from the fund are made to benefit the homeless and disadvantaged in Bonneville County.

Youth Trust Fund-1992

Established by the Idaho Community Foundation to respond to needs of disadvantaged and homeless youth between 12 and 18 years of age. The Foundation encourages gifts of any size from any source to this fund.

Harry and Colleen Magnuson Fund-1990

The fund targets charitable organizations and activities in the city of Wallace as beneficiaries.

Peaceful Settlements Foundation Fund-1997

Created when an existing organization decided to dissolve, its remaining assets were given to ICF to create a permanent fund to provide education and services to citizens of Idaho regarding the prevention, management, and/or peaceful resolution of conflict.

Robert W. and Carol A. Reed Fund-1992

Established to further this pioneer family's tradition of philanthropy, the fund benefits charities and their activities in the Magic Valley.

Earl C. and Harriet Reynolds Fund-1990

This fund was created by Mr. Reynolds, in part, as a memorial to his late wife. Distributions from this gift are dedicated to the support of charitable organizations in the Southwestern Region.

Jim and Bette Roper Fund-1990

Established by this life-long Idaho couple, grants from this fund support a broad range of charitable activities in the Southwestern Region.



Linda Grable-Curtis

Born in Argentina – the daughter of an American mining and explo-

ration businessman who traveled the world – Linda was one of the earliest supporters of the ICF. In addition to creating the Donovan and Evelyn Grable Memorial Scholarship Fund in honor of her parents, and the Geography Knowledge fund to encourage learning about the world and its people, Linda shares her time and talents by providing volunteer assistance to ICF.

Eagle Community Fund-1994

Charitable organizations and projects in the City of Eagle will benefit from this fund. Earnings are being used to grow the fund until a specified amount has been attained.

Roger and Sybil Ferguson Education Fund-1991

Established to benefit innovative educational programs in Madison County schools, the Fergusons participate in the selection of worthy projects to be supported.

Geography Knowledge Permanent Fund-1992

Linda Grable-Curtis established this fund, and she and her husband advise the

Foundation on choice of beneficiaries to further the study of geography by Idaho students in the kindergarten, elementary and junior high grades.

Green Giant Community Fund-1991

Organizations meeting the needs of disadvantaged youth and/or those addressing issues of hunger benefit from this fund. Grants are made in the geographic area in which growers supplying the Buhl company are located.

Kenlon P. and Carol J. Johnson Fund-1992

The fund is to purchase clothing, particularly for winter, for needy children in the Eastern Region.

Foundation

The Idaho Community Foundation contains the following scholarship funds with endowments of less than \$100,000:

Boise Branch, American Association of University Women Inez Robb Scholarship Fund-1997

Created to memorialize the former journalist who bequeathed funds to that organization to provide scholarships to Boise State University juniors or seniors.

Daugherty Foundation-ISU Education Scholarship Fund-1991

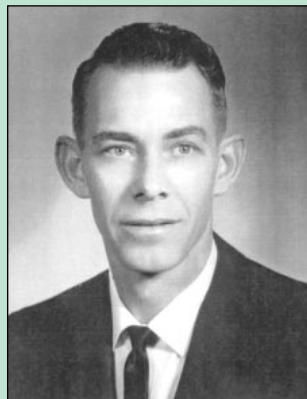
The fund recognizes Idaho juniors or above at Idaho State University who meet high academic standards.

Paul and Jo Easterbrook Scholarship Fund-1997

Created by this Emmett couple to provide scholarships to graduating seniors of a Gem County high school who are pursuing a bachelor's degree at any Idaho institution of higher learning.

Alvie C. Jeffres

Raised in Bonner County, Alvie Jeffres began working at the Furniture Exchange at the age of 16 and ultimately bought the store. Upon his retirement at age 45, he and his wife traveled for many years until his death in 1989. The Alvie C. Jeffres Memorial Scholarship fund was created by his widow, June Jeffres Robertson, in recognition of Alvie's love for youth and education.



Eastern Idaho Technical College Scholarship Fund-1993

Established by the Daugherty Foundation, scholarships will benefit students attending Eastern Idaho Technical College at Idaho Falls.

Irma Frisch Farrington Fund-1993

The fund memorializes Ms. Farrington's sister and brother-in-law through creation of the Alice Wolfe Art Scholarship and the George V. Wolfe Pre-Law Scholarship at Albertson College of Idaho.

Alois and Marie Goldman Memorial Scholarship Fund-1997

Created by George and Mary Freund of Idaho Falls to memorialize his grandparents who died during World War II at Auschwitz.

Gooding High School Class of 1956 Scholarship Fund-1996

Created by the 1956 graduating class, the fund will provide scholarships to graduating seniors of the school. Awards will begin once the fund reaches a predetermined level.

1997 contributors:

Walter C. Bickett
Royce Chigbrow in memory of
Larry Gourley Fields
Donna Simonton Lancaster
Daryl D. Loveland
Kenneth L. Olson
Larry Robertson
Mary Lou Ruby

Donovan and Evelyn Grable Memorial Scholarship Fund-1990

Established by Linda Grable-Curtis as a memorial to her parents, this fund recognizes her mother's lifelong interests by assisting students of the Business and Office Education Program in the College of Technology at Boise State University.

Steve and Donna Guerber Scholarship Fund-1994

Proceeds from this fund will benefit mass communications students at Idaho State University. No awards are being made until a specified amount has been attained.

James and Rose Helebrant Education Scholarship Fund-1991

Established by transfer of a trust, scholarships are awarded to financially needy Buhl High School graduates for educational expenses at a college or university of their choice.

Idaho Press Club-Don Watkins Memorial Scholarship Fund-1992

Established to recognize former journalist and political consultant Don Watkins, scholarships are awarded to graduates of Idaho high schools pursuing careers in journalism or communications who have completed at least one year of college study.

1997 contributor:

Kevin M. Roche

Alvie C. Jeffres Memorial Scholarship Fund-1997

This fund was created by June Jeffres Robertson of Sandpoint in memory of her late husband. Earnings from the fund will provide scholarships to worthy students in Bonner County. Mrs. Robertson and descendants of Mr. Jeffres will serve on the selection committee that chooses the recipients.

Funds of the

J. Carl Mattson Scholarship Fund- 1997

Created by the transfer of an existing trust at Key Bank, the fund will provide vocational agricultural scholarships to students of the Firth School District.

Mountain Home High School Class of 1960 Trust Fund- 1995

Established by transfer of a trust, scholarships are awarded to graduating Mountain Home High School seniors for educational expenses at a college or university of their choice.

Nora Johnson Memorial Fund-1990

Established by the New Plymouth Kiwanis Club in conjunction with the Dorothy L. White Memorial Scholarship, this fund assists graduates of New Plymouth High School with their first year of study at any Idaho institution of higher learning.

Dan and Ruth Panko Memorial Fund-1995

Established by their family in memory of this couple long associated with the Idaho Old Time Fiddlers. Scholarships are awarded to high school graduates active in that organization to attend college with preference given to Idaho State University.

Jim Poore Memorial Scholarship Fund- 1994

Established to recognize the former Idaho Statesman sports editor, the fund grows through proceeds from an annual golf tournament. Scholarships are awarded to college journalism students who attended high school in Idaho.

Idaho Power Company-Douglas E. Sprenger Memorial Scholarship Fund- 1995

Established by Idaho Power Company in memory of this long-time employee and engineer, scholarships are awarded from the fund to a graduate of an accredited high school in the company's service territory to attend a college, university, or technical school.

Idaho Power Company-Larry R. Wimer Memorial Scholarship Fund- 1996

Established by Idaho Power Company in memory of this long-time employee, scholarships are awarded from this fund to a graduate of an accredited high school in the company's service territory to attend a college, university, or technical school.

Frances Reed Purkhiser Memorial Scholarship Fund- 1996

Established by Paul and Judith Schultz in memory of her mother, the fund will honor this outstanding New Plymouth school teacher by providing scholarships to graduating seniors of that community's high school.

Robert C. Weaver Memorial Scholarship Fund- 1991

Established by Neola Weaver in memory of her late husband, residents or former residents of Buhl are eligible for scholarship support as either traditional or nontraditional students.

Dorothy L. White Memorial Scholarship Fund

Established in 1990 by the New Plymouth Kiwanis Club as a permanent memorial, earnings from the fund assist graduates of New Plymouth High School with their first year of study at an institution of higher learning.

AGENCY ENDOWMENT FUNDS

Established by non-profit organizations to take advantage of Idaho Community Foundation investment and administrative services, earnings from these funds are disbursed to the founding agencies for use as their boards of directors deem appropriate.

The Idaho Community Foundation contains the following agency funds with assets of \$500,000-\$999,999:

Boise Family YMCA Endowment Fund- 1993

Established to assure ongoing operating support for the Boise Family YMCA.

The Idaho Community Foundation contains the following agency funds with endowments of \$100,000-\$249,999:

Boise Philharmonic Association Fund- 1990

Established to assure ongoing operating support for the Boise Philharmonic Association.

Learning Lab, Inc. Endowment Fund- 1997

Established to ensure permanence for a gift to this organization, earnings from the fund will support its ongoing operating needs.

United Way of Ada County-Gustav Linning Endowment Fund-1995

Established with an initial gift from the estate of Gustav Linning, earnings from the fund will support ongoing operating needs of United Way of Ada County.

The Idaho Community Foundation contains the following agency funds with endowments of less than \$100,000:

Aid For Friends Endowment Fund- 1997

Established to assure ongoing operating support for this Pocatello organization which serves the homeless and low-income.

Mary V. Arnold Fund for the Idaho Falls Symphony-1997

Created by the transfer of an existing trust, the fund will provide annual support to the Idaho Falls Symphony.

Foundation

Caldwell Fine Arts Series Endowment Fund-1990

Established to assure ongoing operating support for the Caldwell Fine Arts Series.

Children's Charities of Idaho, Inc. Fund-1990

Established to assure ongoing operation of this fund raising program in support of projects for needy children.

First Presbyterian Church of Idaho Falls Fund-1995

Established through transfer of a trust, earnings from this fund support programs as designated by trustees of the Idaho Falls church.

1997 contributors:

Donald and Joann Cissel
Mr. and Mrs. Donald F. Lloyd
Rod and Hazel Rose

Friends of the Nampa Public Library Endowment Fund-1995

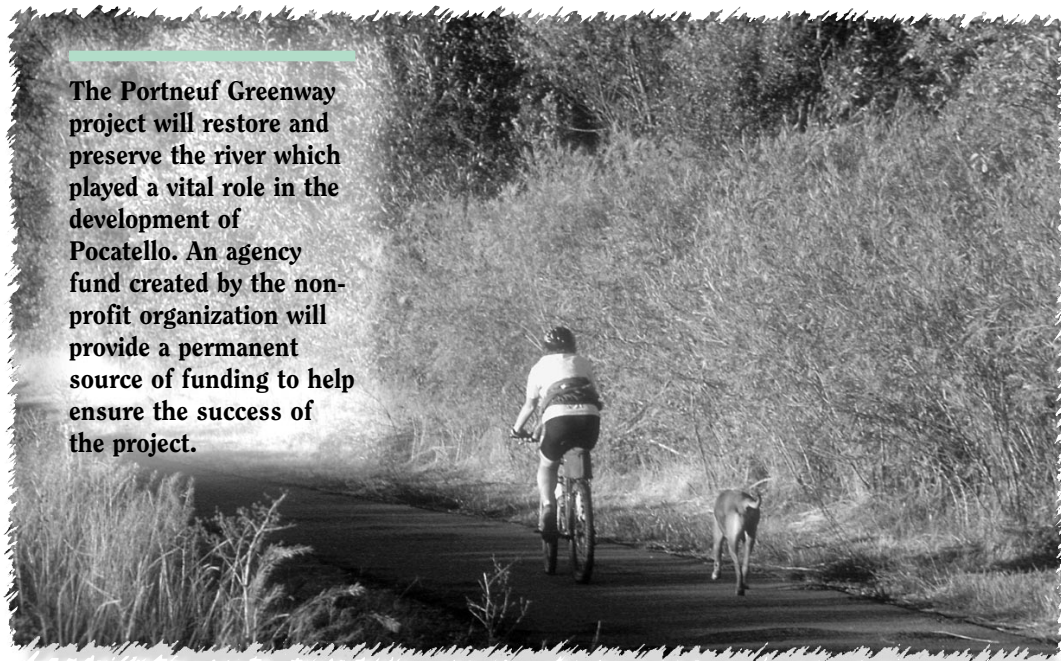
Established to assure ongoing support for operation of the Nampa Public Library.

1997 contributors:

Friends of the Nampa Public Library
Gerda W. Rupert Revocable Trust

Idaho Association of School Administrators Fund-1995

Earnings from this fund support programs providing additional education for members of this statewide association.



The Portneuf Greenway project will restore and preserve the river which played a vital role in the development of Pocatello. An agency fund created by the non-profit organization will provide a permanent source of funding to help ensure the success of the project.

Idaho Museum of Mining and Geology Endowment Fund-1994

Established to assure ongoing support for operation of the museum at the old Idaho penitentiary site in Boise.

Idaho Falls Ducks Unlimited Fund-1995

Established through transfer of a trust, earnings from this fund support programs as designated by the board of the Idaho Falls organization.

Idaho State School for the Deaf and Blind Foundation Fund-1994

Established to support programs as designated by the board of the Gooding school.

IJA Productions Fund for Children's Programs-1994

Established to underwrite ticket prices for children attending arts events sponsored by this Boise-based organization.

Marshall Public Library Endowment Fund-1991

Established to assure ongoing operating support for the Marshall Public Library.

1997 contributor:
Max and Susan Leek

Meridian Education Foundation Endowment Fund-1997

Created to ensure a steady stream of income available for grants to fund innovative projects in the Meridian School District.

PAYADA, Inc. Endowment Fund-1997

Created by this Boise organization to assure annual support for its substance abuse prevention programs to area youth.

Portneuf Greenway Foundation Endowment Fund-1997

Created with a pledge of \$5,000, earnings from this fund will be used for the expansion and maintenance of the Portneuf Greenway in Pocatello. Among the priority projects will be the construction of a Greenway Historic Loop Drive and trail through the Portneuf Gap area. This will include the "Gittins Cutoff" Historic Site, emphasizing the Portneuf Gap's importance to the development of Pocatello.

St. John's Episcopal Church Endowment Fund-1997

Created by this Idaho Falls church to meet future operating needs.

Stanley Sawtooth Meditation Chapel Endowment Fund-1997

Created to provide a permanent source of funds to maintain this historic building in Stanley.

TESH, Inc. Fund-1990

Established in 1990 to assure ongoing operating support for this Coeur d'Alene-based development workshop for mentally disabled citizens.

Funds of the

The Idaho Community Foundation is fortunate that in its early years its board of directors had the vision to develop an operating endowment, contributed mainly by the business community. The operating endowment has always been critically important in helping to fund ICF's administrative expenses – our costs of doing business.

The operating endowment now exceeds one million dollars in value and in 1997 funded approximately 30% of the Foundation's cash expenses. The income provided by the fund helps ICF maintain its modest fee structure for managing endowment funds, thus helping us to continue our cost-effective service to donors.

ICF encourages businesses and individuals to join the list of Foundation supporters who have created named operating endowment funds with contributions of at least \$5,000. We are of course honored to accept contributions to the operating endowment fund of any size, at any time.

OPERATING ENDOWMENT FUNDS

Established at the time the Idaho Community Foundation was developed in 1988 to assure availability of monies required to operate effectively, the operating endowment contains the following funds with assets of \$250,000-499,999:

Northwest Area Foundation Operating Fund-1989

The operating endowment contains the following funds with assets of \$100,000-\$249,999:

J.A. and Kathryn Albertson Operating Fund-1990

Boise Cascade Corporation Operating Fund-1989

The operating endowment contains the following funds with assets of less than \$100,000:

Basic American, Inc., Operating Fund-1991

Coeur d'Alene Mines Operating Fund-1995

Deloitte & Touche Operating Fund-1991

John B. Fery Fund-1994

Established by Boise Cascade Corporation in appreciation of Mr. Fery's distinguished service as chief executive officer of the company and in recognition of his contribution to Idaho as founding chairman of the Idaho Community Foundation.

First Interstate Bank Operating Endowment Fund-1991

First Security Bank Operating Endowment Fund-1991

Global Travel Operating Fund-1991

Hecla Mining Operating Fund-1991

William R. Hewlett Fund-1992

Idaho Power Company Operating Fund-1990

Intermountain Gas Industries Foundation Operating Fund-1991

Key Bank Operating Endowment Fund-1992

Morrison Knudsen Company Foundation Fund-1991

Potlatch Corporation Operating Endowment Fund-1992

Steele-Reese Foundation Operating Endowment Fund-1994

U.S. Bank Operating Fund-1991

U S WEST Communications Operating Endowment Fund-1992

Foundation

SPECIAL PROJECT FUNDS

During 1997, the Foundation managed the following nonendowed funds:

J.A. and Kathryn Albertson Foundation Educational Fund-1996

The fund was created through a special partnership with this private foundation. In 1997 it was used to provide \$735,000 of grants of up to \$25,000 each for innovative educational projects throughout the state.

Bridge to 2000 Project-1997

Created to collect contributions from a wide variety of sources to expand and improve the river greenbelt in Idaho Falls.

Colonial Arts Center Project Fund-1994

Following a capital campaign, the fund is being used to convert the old Colonial Theatre and an adjacent building in downtown Idaho Falls into facilities for performing arts presentations, an art gallery and offices, classrooms and storage for arts organizations.

1997 contributors:

Anonymous (14)
Joan Abbott
Philip and Sharon Affleck
Don R. and Anne R. Alexander
Gloria Miller Allen
Lane and Karen Allgood
Lane and Nancy Archibald
Architectural Building Supply
Judy and Bill Armour
B & F Distributing
Babcock & Wilcox
Paul and Allene Bacca
Bank of Eastern Idaho
Jack and Elaine Barracough
Basic American, Inc.
Mr. and Mrs. Robert E. Beckwith
Bob and Barbara Berlin
Kay Bishop
Charles R. and L. Janeice Boge
Margaret Borreson
Susan H. Bower
Broadway Ford, Inc.
Rusty Broughton and Karl Sorman
Shawna Brown
C & D Properties
Bradford A. and Sue Ann Cannon
David and Mavis Cauffman
Center for Sight
Randi and Gary Chaikin
Joan Chesbro
Sara and Rocco Cifrese
Donald and Joann Cissell
Ron and Adelle Clawson
Loa and Dick Clute
Lewis and Judy Cook
Karen and Gerry Cornwell
Jim and Peggy Countryman
Maxine and Alex Creek
Greg and Tricia Crockett
Alan and Alice Crockett
Althea and Dan Cudaback
Dave and Brenda Daniel
Roger and Laura Jo DeMordaunt
Design Gallery/Western Wholesale
Jean Donaldson
Doug Andrus Distributing, Inc.
Rod and Eileen Douglass

Keener and Denise Earle
Eastern Idaho Regional Medical Center
Jay and Sally Ellis
Jack B. Ellsworth, Sr.
Gary and Lynn Ellwein
Carma Erickson
Linda Evans
Robert E. and Annette Farnam
First Security Bank
Jeannie Stoddard Frazell
Ron and Sandy Frazell
Lexie and Alan French
Vernon O. Gaffner
Lee and Linda Gagner
John and Norma Galazin
General Mills Operations, Inc.
Carrie L. Getty
D. Kent Godfrey
Linda Guay
Fred and Peggy Gunnerson
Al and Gayle Hagler
Fred Hahn
Blake and Laurel Hall
Scott Hallman
Bert Hansen
Michele and John Hansen
Thomas and Eleanor Harper
Jean C. Hartwell
Ralph and Mary Lynn Hartwell
Russell and Eddie Heath
Daniel Hinkley
Charles and Marci Homer
Tim and Anne Hopkins
John and Kathy Horan
Idaho Eye Center, P.A.
Idaho Pacific Corporation
Liz Istrata
Clara Jacobson
Tamar S. Jergensen
Forde and Karen Johnson
Kenlon and Carol Johnson
Kathie Jones
Lee and Kathryn Jones
Evelyn Juell
Kenneth and Carolyn Katsma
Chuck and Gail Kemper
Les and Jean Kiel
Margie Kinghorn

Dieter A. and Margaret Knecht
Chip and Louise Krantz
Lynn Krantz
Kenneth Krell
Miles LaRowe
Rick and Leigh Latham
Leland Beckman Foundation
Jan and Paul Litteneker
Lockheed Idaho Technologies Company
Lockheed Martin
Long Custom Woodwork, Inc.
John K. Long
Liz and Dick Loughney
Jan and Chuck Matthews
Chris and Cheryl Mattocks
Mark McAlister
Ray and Douglas McCarty
James and Maureen McFadden
Janice and Jim McGeachin
Frank and Margaret McGovern
Donna and Orville Meyer
Kent and Earlene Mickelsen
Linda Milam
Dean Miller
Sharon Modrow
J.S. Molen
Diane Mondell
Angela Moore
Courtney Morgan and Randy Stimpson
Judy and Dean Mortimer
Richard Napier
Catherine Nelson
Douglas R. Nelson
Douglas and Nancy O'Brien
Jon Ochi
John Ohman
Sheila Olsen and Lori Marks
Stephen R. Parry
Gary and Linda Patrick
Richard V. Pedersen
Michael and Sandra Peters
Paula Peterson
Philip McCowin Orthopedics, P.A.
Karen Poole
The Post Company
Premier Dental Care
Ray and Joan Pullen

Arthur B. and Renee M. Rammell
LeRoy and Ethel Rasmussen
Rex and Melinda Redden
Wendy Reece and Scott Hyster
Clarence and Dorothy Reinhart
Larry and Deb Reinhart
Ken and Joy Rempe
Jim Richards
Kimmion Richards and Douglas Whatmore
Paul and Alexis Rippel
Kirk and Mary Jane Ririe
Robert V. Burggraf Co., Inc.
Myron and Juanita Rosenwinkel
The San Francisco Foundation on behalf of Leslie and George Hume
Bernice Sargis
Dr. and Mrs. Thomas J. Setter
Jeanne Sherman
David and Carol Shipman
Jerry and Ann Shively
David Shrader
Dewain and Elizabeth Silvester
Oliver D. Smith
Marcella and Randy Spruill
Linda and Bruce Stanger
Amy and John Stevens
B. Shields and Sylvia Stutts
Donald H. Suckling
Brent R. Swanson
Brent and Vicki Taylor
Mr. and Mrs. Curt R. Thomsen
Susan L. Towne
U.S. Bank
Utterbeck Construction
Steve Wagner
Dane and Sherry Watkins
Don and Sheri Weber
Linda Weiss
Westmark Federal Credit Union
Albert Whitesell
Ellen Wingerson
Brad and Roger Wright
Mr. and Mrs. Frank Wright
Dr. and Mrs. Peter C. Zimmerman
Ronald M. Zohner

Funds of the

Idaho Assistive Technology Project Fund-1994

The fund is used as collateral to guarantee loans for the purchase of adaptive equipment intended for improving the lifestyle of disabled individuals. By year-end 1997 the program had provided assistance with \$282,431 in loans to 68 qualifying individuals.

Idaho Falls Opera Theater Fund-1994

Created by Miles and Virginia Willard, the fund is being used for annual operating support of the organization over a five-year period.

Idaho Fish and Game Conservation Education Center Project Fund-1997

Contributions and earnings on their investment will be used to construct an educational facility as a cooperative effort of the Idaho Fish and Game Department, Boise State University, and the Boise Independent School District.

Idaho Human Rights Network Fund-1994

Established by the Northwest Coalition Against Malicious Harassment with a grant from the Northwest Area Foundation, the fund supports operation of a statewide network of community-based organizations to address the problem of bigotry in Idaho.

Idaho Peace Officers Memorial Fund-1995

The fund will support establishment of a permanent memorial to Idaho law enforcement officers who have died in the line of duty.

1997 contributors:

Ada County Fire Chiefs' Association
Ada County Sheriff's Explorer Program
Beverly Ailor
A.G. and Rita Albers
Mr. and Mrs. Elvin J. Albiston
Greg H. Allen
Michael and Judy Allen
Alpha Phi Sigma - Criminal Justice Department
Alpine Masonry
American Society for Industrial Security
Rafael Anderson
Norman Ayers
Pam Babbitt
R.H. and Lucille Baltazor
Bannock County Deputy Sheriff's Association
James and Dorothy Barham
Kirk and Janette Bartak
Doug Barton
Basic Dispatch Academy #22
Basin Academy #115
Mr. and Mrs. James H. Benham
Leslee J. Best
Bingham County
Bingham County Sheriff's Department
Scott Birch
Edward Bird
Blaine Auto
Boise BBC #401
Boise Highlanders
Boise U.S. Employees Federal Credit Union
Michael and Liz Bolts
Barbara Bostwick
Stephen F. Bowers
Brashears and Sons
Gary and Bea Broker
Mr. and Mrs. Dick Brooks

Bruce's Automotive
Charles and Pauline Bryant
Buckhorn Electric
Barbara Burk
Burr International
Jess L. Busby
Byron's Welding
C & M Copy
Richard Cade
James and Lois Cain
Douglas M. Camster
Canyon County Sheriff Reserve Deputies
Joan D. Carley
Cassia County Sheriff's Office
Dennis Chambers
Mr. and Mrs. Robert D. Chaney
Travis and Kathi Chaney
R. Dan Charboneau
Raymond Chopko
Daniel and Crystal Christensen
Citizens on Patrol
City of Lewiston
B.J. Clark
Clark County Sheriff's Search and Rescue
Roy and Elizabeth Colson
Gary and Nancy Compton
Lloyd Coons, Jr.
Corey's Lawn Care
R.D. and Jeraldine Corrie
Romayne Cosner
Countryside Flourist
Countryside Properties
John P. Crank
A. Carl Craft
Sherylyn and Daniel Cross
Croy Street Cafe
Clay and Sharon Cummings
Victor and Virginia Cummins
D. Craig Dakins
W.R. Danly
Jay and Laurie Davis
Davis Embroidery
Gary and Barbara Dawson
Bron and Debra Day
Destination, Inc.
Detention Academy #9
Lee and Barbara DeVore
Bill and Leslie Ditz
Don's Auto Parts

Eddy Donica
Walter and Rita Donovan
Charles and Nancy Duke
Robert J. Dunne
Eddies Fine Foods
Lisa Egbert
Mr. and Mrs. Donald Eggleston
El Korah Temple Shurtah Unit
Maurice O. Ellsworth
Elmore County Sherriffs
Mr. and Mrs. Steven Endecott
Mr. and Mrs. Floyd H. Evans
Tony and Connie Evans
Mary Patricia Everill
Expressions in Gold
Ed and Bard Fackrell
Wanda Fallis
Terry Felts
Michael Ferderko
Fiesta Colors by Ad-Hock Ceramics
Lanea Fields
Firing Line, Inc.
Robert and Jan Fitzpatrick
Jerry and Alicia Flavel
Joe W. Fleck
Fleetstreet Couriers
Flolos
Todd Fluckinger
Fort Boise Optimist Club of Boise
Chuck and Carol Freeland
Betty M. Freeman
Elsie Mae Freeman
Spafford and Beryl Frink
Mr. and Mrs. John A. Galt
Darrell Gamble
Garden City Police Department
Garden Valley Senior Center
James A. Gardner
Mr. and Mrs. Homer Garrett
Charles O. Garrison
Gary's Automotive
Kathleen Gaughan
Glenn and Barbra Gearhard
Global Travel, Inc.
Diane L. Goracke
William and Patricia Gordon
Gracelynn Gables
Larry and Debbie Green
Sally Gregory
Larry Grossman

Guffys
Jeff Gunter
Hailey Auto Body
Hailey Chevron
Hailey Hotel
Hailey Nursery
B.C. "Chris" Hall
Clyde and Mildred Hall
Dan and Donna Hamrick
Hanners Ranch
Gary Hardman
Steve Harkins
Marilyn Hawes
James V. Hawkins
Jancy Jo Hawley
Marshall Haynes
Ann M. Heltsley
Fred Higbee
James and Joanne Hill
Hitchcock
Brian and Sandi Holbrook
Marvin and Evelyn Holbrook
Mr. and Mrs. Roy Holloway
Lesley and Kathy Howells
Doris Huff
Mr. and Mrs. Kenneth R. Huff
Idaho Conservation Officers Association
Idaho Falls 911 Dispatch
Idaho Falls Police Citizen Academy Class #5
Idaho Lumber Company
Idaho Police K-9 Association
Idaho Prosecuting Attorney's Association
Idaho Sheriffs Association
Idaho Society SAR, Inc.
Idaho Women's Fitness Celebration
Idaho Federal Credit Union
Ironwood Tennis
Jackson Food Stores
Darryl James
Leta Jensen
Roxann Jensen
Jim's Appliance & Furniture, Inc.
Gary L. John
Deane Johnson
Nina K. Johnson
Theo and Lorna Johnson
Tim and Amanda Johnson
Bonnie Baird Jones

Foundation

Juniors Card Shop
K.D. Roofing, Inc.
Clyde R. Kaffenberger
David C. Kane
Gregory and Leona Karayan
Patrick and Phyllis Kaufman
Dennis Kavanagh
Kelly's Grand Ole Opry
Lawrence and LaDawn Kidd
Dwight Kilgore, Jr.
Loran and Lola Kingsford
Kiwanis Club of Idaho Falls
James H. Klemann
Knights of Columbus
Knights of Columbus Council
#1131
Kootenai County Substance Abuse
Council
Kootenai County
Lawrence and Patsy Kortan
L.A. Associates
Michael J. Lake
Don and Darla Larson
Basil and Dorothy Lattimer
George and Marilyn Lee
Joseph and Martha Leick
Jim Leisenfeld
Les Schwab
Leslie's Pet World
John and Gail Lewis
Joseph and Sharon Lewis
Lewiston Lions Club, Inc.
Milan Lexa
Jack and Kathleen Lindley
Tod and Lorrie Littlefield
Carmen J. Lizaso
Mark Loos
Dale and Marlene Loper
Lykes Insulation
Kevin and Rachel Macho
Magic Valley Peace Officers
Association
Lou Mallea
Paul Manning
C.B. Marcinkowski
Mr. and Mrs. W.W. Mays, Jr.
Mike and Elsa McGann
James D. McClary
Douglas J. McFall
Kevin McMullin

M.D. McMurria
Gary McStay
John E. Medes
Diane Mendenhal
Meridian Police Academy
John Meienhofer
David and Rebecca Meyer
Mr. and Mrs. Gary Meyers
Miley Insurance
Gary and Charlene Miller
Minidoka County Deputies
Association
Mini Mart
Mark Monroe
Gary Moore
Mr. and Mrs. Howard M. Moore
Ronald and Marlene Moore
Greg Morgan
Moscow Police Department
William and Kimberly Musser
Jeff and Lynda Nafsinger
Nelson's Auto
Nez Perce Tribe
Leland and Janiel Nickerson
Pete Nitz
Carolyn Noble
J.A. and Z.L. Nysingh
Steve and Sherrie Oldenberg
Barbara Oldenburg
Owyhee County Sheriffs Posse
Greg Painter
Robert and Rhoda Parenti
Paul's Market
Hartsel and Lucy Phelan
Pizza Factory
Pocatello Neighborhood Watch
Pocatello Police Relief Association
David and Kelly Pogue
Post Academy Staff
Post Session #112
Power Engineers
Practical Renta Car
Mr. and Mrs. John D. Prescott
Scott K. Prestel
Pro Photo
Prudential Insurance
Virginia Purdy
Norman Purviance
Earl A. Putman

Steve Pyle
Tim and Juanita Qualls
John and Joan Quinzio
Catherine Rambaud
Tom Ramsy
Cyril Randell
Eric and Kate Rau
Arlene Ray
Real Estate Center
Research Dynamics
Red Elephant
Ryan Redmon
Philip and Alwilda Reed
Bobby and Ronnie Remington
Malin Reynolds
Monte and Nancy Richards
Mr. and Mrs. Stephen Richardson
Michael Riebs
Rigby Police Department
River Run Retirees
Lou Roane
Roberts Electric
Paul Robinson
S.J. Robinson
Rocket Science
Jean M. Rucker
Marion Rycraft
Jesse and Patricia Salem
Linley and Melba Sanders
Sandpoint Police Department
Sandpoint Police Dispatch
Sawtooth Ford
Sawtooth Wood Products
Lynda Scales-Thurman
Earl and Kathleen Scharff
Dennis and Valerie Scieszinski
Mark Scribner
Clarence Sessions
E.G. Siemon
Virginia Sigety
Silver Creek Electric
Eric and Elizabeth Skoglund
Tony and Ruth Skoro
Steven and Brandi Slachter
Deborah Slocum
Dave Smith
Snow Bunny
Marvin J. Snyder
Splash & Dash

Sprenger & Grubb Associates
State of Idaho
May States
Steve Stenersen
Storey Construction
Debra K. Stufflebeam
Tristan Sunsted
Sun Valley Associates
Sun Valley Aviation
Sun Valley Cleaners
Sun Valley Executive Service
Sun Valley Transfer and Storage
Sutton & Sons
Leonard and Barbara Svetich
SWIRA Session #1
Richard and Diana Taggart
Scott Taggart
Teamsters Retirees Club
Dennis and Phyllis Thomas
Jeff Thurman
Wesley and Suzie Thurston
The Travel Smart Shop
Treasure Valley Baptist Church
Treasure Valley United Way
True Wheel
Uhrigs Fencing
Page Umek
V.F.W. Auxiliary #63
Valley Auto Body
Valley Car Wash
Valley County
Valley Entertainment
Norman Van Ness
Bill and Jena Vasconcellos
Venzon Jewelers
Harry and Helen Waller
Lori A. Warren
Washington County Sheriffs Posse
Washington Federal Savings
Freda Weast
Janet Weaver
Lila Weaver
Harold Webb
Michel Webb
E.D. Whitney
Woodside R.V.
Wiedricks Metal Works
Chad and Misty Wigington
Wilkins, Inc.

Justin William
Mikel and Lorette Williams
Van Williams
Darla Williamson
Thomas and Sharon Wilson
Windermere Realty
Marcia Wing
Wolf Sun Tanning Center
Stan and Patty Wood
Wood River Chapel
Greg and Bobbi Wooten
Patricia Worley
Gary F. Young
Vern and Mary Ziegler

Funds of the Foundation

Multiple Sclerosis Direct Aid Fund-1992

This fund represents the proceeds of an Itzhak Perlman Benefit Concert and was created by Ms. Judy Strand for the sole purpose of providing direct benefit to those persons afflicted with MS who are living in the service area of the Idaho Chapter of the National Multiple Sclerosis Society. Disbursements are made through the Idaho chapter.

Steele-Reese Foundation Special Project Fund-1997

Created by this private foundation, grants from the fund are determined by ICF and earmarked to organizations in rural Idaho in the areas of education, social welfare, health, and the humanities.

Unitarian Fellowship of Idaho Falls Fund-1994

Created by Miles and Virginia Willard, the fund is being used for expenses associated with filling an administrative position at the church with remaining funds to be issued annually for operating support over a five-year period.

United Cerebral Palsy of Idaho, Inc. Scholarship Fund-1996

Created through gifts from Micron Technology, Ore-Ida Foods, and T.J.International. Beginning in 1997, the fund will provide nine scholarships to students enrolled in an Idaho college or university and who were chosen from among entrants to the Les Bois Run, Walk, & Roll event to benefit United Cerebral Palsy of Idaho, Inc.

Idaho Community Foundation Administrative Fund-1988

Contributions are made by individuals, corporations and foundations who recognize that operating support is a vital need for the Idaho Community Foundation. Contributions enable the Foundation to focus on its mission of supporting and enhancing philanthropic and charitable activities in Idaho, while minimizing costs that otherwise would be assessed to the charitable funds of the Foundation.

1997 contributors:

American Fine Foods
Don R. Atkinson
*ARTCO
*Arthur Andersen LLP
Robert D. Bolinder
Dolores Scott Chapman
*Communications et al
Thomas M. and Alice E. Cromwell
D.A. Davidson & Co.
Mrs. and Mrs. Rex L. Dorman
Bob and Sandra Drake
A. Dale Dunn
Larry and Judy East
John B. Fery
Mr. and Mrs. Clark C. Fidler, Jr.
Mr. and Mrs. Vince Hannity
Mr. and Mrs. J.H. Hawley
*Tom and Alice Hennessey
Martin and Frances Hepker
William R. Hewlett
Mr. and Mrs. Kenlon P. Johnson
Robert and Diane Johnson
Bessie Katsilometes
Mr. and Mrs. Donald R. Kayser
George and Elvera Klein
*H.F. and Colleen Magnuson
Grace M. McKenna
Eileen W. Mundorff
Jean C. O'Connor
Park Price Motor Company
Mr. and Mrs. Robert K. Pedersen
Al and Terry Perkins
Alan and Wendy Pesky
Mary and Jim Schmidt
JoAnn and Gene Thompson
*Templin's Resort
Tregar, Inc.
*U.S. Bank
Dr. G. Anthony and Katherine Wolfe

* Denotes in-kind gift

LEGACY SOCIETY

Members of the Legacy Society are individuals who have identified themselves as having designated the Idaho Community Foundation as an ultimate beneficiary of deferred gifts in such documents as wills, bequests and other planned giving instruments. The Foundation welcomes new members.

Guy E. and Mary D. Butterfield

John Chapman

Dennis Dahl

John B. Fery

Linda Grable-Curtis

Steve and Donna Guerber

Alice E. Hennessey

Nick and Sara Ifft

Arthur and Jane Oppenheimer

Tom Morgan

Mr. and Mrs. Allen Pennay

Earl C. Reynolds Jr.

Ann Lucini Williams

Summarized Financial Data

SUMMARIZED FINANCIAL DATA FOR YEARS ENDED DECEMBER 31, 1997 AND 1996

A copy of the complete 1997 financial statements audited by Arther Andersen LLP is available upon request from the Idaho Community Foundation, 101 South Capitol Boulevard, Suite 1702, Boise, Idaho 83702.

STATEMENTS OF FINANCIAL POSITION

Assets		1997	1996
	Cash and equivalents	\$ 767,295	\$ 1,248,871
	Investments	15,955,876	10,627,277
	Receivables	1,723,499	1,946,240
	Prepaid expenses	—	3,495
(1)	Other assets, net	950,786	933,763
	Total Assets	\$ 19,397,456	\$ 14,759,646
Liabilities			
	Accounts payable	\$ —	\$ 5,210
	Total Liabilities	—	5,210
Net Assets			
	Unrestricted: Operating	62,527	31,746
	Endowment	17,500,365	11,587,978
	Special Projects	496,099	1,205,990
(2)	Temporarily Restricted: Endowment	218,029	754,843
	Special projects	1,120,436	1,173,879
	Total Net Assets	19,937,456	14,754,436
	Total Liabilities and Net Assets	\$ 19,937,456	\$ 14,759,646

STATEMENTS OF ACTIVITIES

Revenues, gains and other support		1997	1996
	Contributions and memberships	\$ 4,696,663	\$ 3,796,103
	Interest and dividends	882,003	332,474
	Investment gains (losses)	1,896,386	709,061
	Unrealized gain (loss) on other assets	15,335	(1,445,448)
	Total Revenues	7,490,387	3,392,190
Expenses			
	Grants	2,390,897	542,548
(3)	Administrative	456,470	371,564
	Total Expenses	2,847,367	914,112
	Revenues over expenses	4,643,020	2,478,078
	NET ASSETS, beginning of year	14,754,436	12,276,358
	NET ASSETS, end of year	\$ 19,397,456	\$ 14,754,436

(1) Other assets consists of works of art which were contributed to the Foundation during 1994. In accordance with the endowment agreement, these works of art will be liquidated within a reasonable period of time, and the net proceeds from the sales will be added to the endowment fund. During 1996, the Foundation recorded an unrealized loss of \$1,445,448 to adjust the artwork to current net realizable value. This adjustment represents a reduction of \$1,016,471 in the value of the artwork and an increase of the allowance for estimated commission and other selling expenses of \$428,977. The December 31, 1997 and 1996 other asset balances of \$950,786 and \$933,763, respectively, are net of allowance for estimated commission and other selling expenses of \$1,357,534 and \$1,445,724, respectively.

(2) Represents outstanding pledges.

(3) Includes \$81,874 for investment management fees.

BOARD OF DIRECTORS

DON ATKINSON
Sun Valley
(2) (4)

ELIZABETH CASEY
Vice President, Casey Funeral Home
Salmon
(2) (6)

DOLORES CHAPMAN
McCall
(2) (5) (6)

FORD ELSAESSER
Elsaesser, Jarzabek & Anderson
Sandpoint
(2) (3)

JOHN B. FERY
Retired Chairman and CEO,
Boise Cascade Corporation
Boise
(1) (2)

MARGARET E. GIGRAY
Journalist/Vice Chairman,
Whittenberger Foundation
Caldwell
(5) (6)

RALPH M. HARTWELL
President, The Hartwell Corporation
Idaho Falls
(3) (6)

ALICE E. HENNESSEY
President and Executive Director,
Idaho Community Foundation
(1)

KENLON P. JOHNSON
President, Forde Johnson Oil Company
Idaho Falls
(1) (2) (3)

D. WHITMAN JONES
President, Business Psychology
Associates
Boise
(1) (6)

BESSIE KATSILOMETES
Associate Director, Enrollment
Planning & Registration
Idaho State University
Pocatello
(2) (6)

H.F. MAGNUSON
President, H.F. Magnuson Company
Wallace
(1) (2) (5) (6)

ROGER A. MARTELL
Retired Partner, Deloitte & Touche LLP
Boise
(1) (2) (4)

WILLIAM VERN McCANN JR.
Attorney at Law
Lewiston
(1) (4) (5) (6)

PARK PRICE III
President, Park Price Motor Company
Pocatello
(1) (4) (5)

JAMES H. ROPER
President & CEO,
Roper Clothing Company
Burley
(2) (3)

NANCY SUE WALLACE
President, City Council
Coeur d'Alene
(2) (3) (6)

Service

ended in 1997

JOHN G. ST. CLAIR
Attorney at Law
Beard St. Clair Gaffney McNamara P.A.
Idaho Falls

OFFICERS

PARK PRICE III, Chairman
President, Park Price Motor Company
Pocatello

ROGER A. MARTELL, Vice Chairman
Retired Partner, Deloitte & Touche LLP
Boise

ALICE E. HENNESSEY, President
Executive Director, Idaho Community Foundation
Boise

WILLIAM VERN McCANN JR., Secretary
Attorney at Law
Lewiston

IRVING LITTTMAN, Treasurer
Vice President and Treasurer,
Boise Cascade Corporation
Boise

STAFF

ALICE E. HENNESSEY
President & Executive Director

BOBBETTE F. YOUMANS
Grants/Fiscal Officer

ELAINE KEMPTON
Administrative Assistant

PREVIOUS BOARD MEMBERS

For their vision and generous support, the Idaho Community Foundation is pleased to give continuous recognition to those who have previously served on the Board of Directors:

Jim L. Anderson (1988-1994)
Roger H. Ball (1988-1992)
Thomas B. Campion Jr. (1994-1996)
Marvin Clausner (1988-1989)
Sybil Ferguson (1988-1995)
C.E. (Gene) Hill (1988-1994)
Bobbie Huguenin (1994-1996)
G. Nicholas Ifft (1988-1996)
Peter T. Johnson (1988-1995)
Todd Maddock (1989-1992)
John W. McHugh (1988-1995)
Daniel R. Nelson (1988-1994)
John L. Runft (1988-1995)
John G. St. Clair (1988-1997)

COMMITTEE ASSIGNMENTS:

- | | |
|---|--------------------------------|
| (1) Executive Committee | (5) Nominating Committee |
| (2) Asset Development Committee | (6) Grants Committee |
| (3) Gift Acceptance Committee | |
| (4) Investment Committee, Chaired by
Irving Littman of Boise and also
includes C.E. "Gene" Hill, Boise. | bold=committee chairman |

REGIONAL ADVISORY PANEL MEMBERS

Northern Region

Dan Hammes
St. Maries

David Keyes
Bonners Ferry

H.F. Magnuson
Wallace

Colleen Mahoney
Lewiston

William Vern McCann Jr.
Lewiston

Fred Noland
Grangeville

JoAnn Thompson
Moscow

Nancy Sue Wallace
Coeur d'Alene

Stanley C. Wood
Coeur d'Alene

Carmelita G. Spencer,
Grangeville, completed
her service on this panel
in 1997.

Eastern Region

Daniel S. Hess
Rexburg

Bessie Katsilometes
Pocatello

Robert R. Loucks
Salmon

Linda S. Martin
Idaho Falls

Sharon Price
Pocatello

Lew Rodriguez
Blackfoot

Gail Siemen
Pocatello

Suzie Sneddon
Montpelier

John G. St. Clair
Idaho Falls

Southwestern Region

Dolores Chapman
McCall

Judith T. Ellis
Indian Valley

Margaret E. Gigray
Caldwell

Connie Hogland
Boise

Bliss Knowles
Ketchum

David Little
Emmett

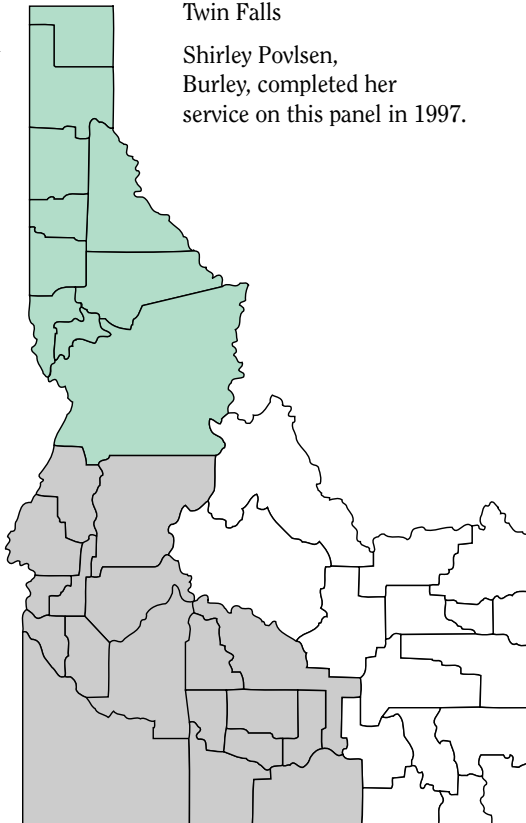
Paul Nettleton
Murphy

Arthur Oppenheimer
Boise

Blossom Turk
Boise

Harry B. Turner
Twin Falls

Shirley Povlsen,
Burley, completed her
service on this panel in 1997.



OTHER PUBLICATIONS AVAILABLE

“Grant Making Guidelines”

“34 Ways to Invest in Idaho: A Guide for Donors”

“Investing in Idaho: A Guide for Financial Advisors”

“Investment and Distribution Policy”

“Helping Donors Decide: Private or Community Foundation”

“Differences in Tax Treatment of Private and Community Foundations”

“The Idaho Community Foundation and Agency Endowments”

Quarterly newsletters

Acorn Society Brochure

Grant Making Brochure

Legacy Society Brochure

To order these publications, or for further information:

Idaho Community Foundation
101 S. Capitol Boulevard
Suite 1702
Boise, Idaho 83702

OR

P.O. Box 8143
Boise, Idaho 83707

208-342-3535
1-800-657-5357 (toll free within Idaho)
208-342-3577 (FAX)



**IDAHO
COMMUNITY
FOUNDATION**

**101 S. CAPITOL
BOULEVARD
SUITE 1702
BOISE, IDAHO
83702**

OR

**P.O. Box 8143
BOISE, IDAHO
83707**

208-342-3535

1-800-657-5357
(TOLL FREE WITHIN
IDAHO)

208-342-3577
(FAX)

NON-PROFIT
ORGANIZATION

U.S. POSTAGE

PAID

BOISE, IDAHO
PERMIT No. 673