

Aberdeen Ahsahka Albion Ammon Arco Ashton Athol
Atlanta Bancroft Bellevue Blackfoot Bloomington Boise Bovill
Bonners Ferry Bruneau Buhl Burley Caldwell Cambridge Clarkia
Carey Cascade Castleford Cataldo Challis
Coe D'Alene Chubbuck Clark Fork
Cottonwood Council Craigmont Culdesac
Deary Declon Donnell Downey Driggs Dubois
Eagle Elk City Elk River Emmett Fairfield Filer
Fernwood Firth Fort Hall Fruitland Grace
Garden City Good Hope Grangeville Grand View
Garden Valley Glenn *Years Serving* Ferry Georget *Idaho* town
Genesee Hope Haile Hamer Horseshoe Bend
Hayden Homedale Hazelton Hagerman
Idaho City Idaho Falls Indian Valley Lona
Irwin Juliaetta Jerome Kamiah Kellogg Kuna
Kimberly Keith Ketchum Kooskia Lapwai Laclede
Lava Hot Springs Lowman Lewisville Leadore
Lewiston Macks Inn Mackay Malad City
May Malta McCall Melba
Marsing Menan Meridian Middleton Montpelier Moore
Mullan Moscow Mountain Home Murtaugh Nampa Nezperce
Naples Notus New Meadows New Plymouth Oakley Orofino
Osburn Paris Parma Payette Peck Pierce Pinehurst Placerville
Priest Lake *Idaho Community Foundation* Priest River
Plummer Pocatello *1998 Annual Report* Post Falls Potlatch
Preston Princeton Rexburg Richfield Rigby Riggins Roberts
Ririe Rockland Rupert St. Anthony St. Maries Sandpoint
Salmon Shelley Soda Springs Spirit Lake Stanley Sugar City
Sun Valley Sweet Terreton Tetonia Troy Twin Falls Ucon
Victor Wallace Weippe Weiser Wendell Wilder Winchester

Our Tenth Year of

WE GATHER, GROW, AND GRANT CHARITABLE FUNDS TO IMPROVE THE QUALITY OF LIFE IN IDAHO COMMUNITIES.

1998 NEW FUNDS

Endowments:

- Mary Fran Aguirre Academic Scholarship Fund
- Bank of Eastern Idaho Operating Endowment Fund
- Sheila Hennessey and Ern Blackwelder Fund
- Duane and Lola Hagadone Fund Camp Hodia Endowment Fund
- Idaho Association of Museums Endowment Fund
- Idaho Black History Museum Endowment Fund
- Idaho State Council of Trout Unlimited Graduate Scholarship Fund
- The Fund for Joe's Kids
- Lex and Celia Kunau Fund
- Maxine Elliott Kussy Forget Me Not Fund
- Del Moore Fund
- National Association for the Mentally Ill, Boise Fund
- John and Karen Rosholt Operating Endowment Fund
- Scottish Rite Learning Center Fund
- Nif and Sue Sullivan Fund
- Sonja Tarnay Educational Fund
- Robert I. and Barbara Troxell Fund
- Washington Trust Bank Operating Endowment Fund
- H.R. and Betty Weston Fund

Philanthropic Gift Funds:

- Tom and Alice Hennessey Philanthropic Gift Fund
- Irv and Trudy Littman Philanthropic Gift Fund
- Marshall Family Fund
- Pat and Lisa McMurray Family Fund

Special Project Funds:

- Bridge To 2000 Special Project Fund
- Idaho Youth Involvement Project Fund
- Operation Night Vision, Inc. Fund

TABLE OF CONTENTS

| | |
|---------------------------|----|
| 1998 in Review | 1 |
| Friend of the Foundation | 3 |
| About the Foundation | 3 |
| Donor Choices | 5 |
| Advantages for Donors | 6 |
| Grantmaking | 7 |
| Funds of the Foundation | 17 |
| First 10 Years | 32 |
| Summarized Financial Data | 40 |
| Foundation Leadership | 41 |

On the cover: a list of the 154 communities in which the Idaho Community Foundation has made grants.

A VITAL PHILANTHROPIC RESOURCE FOR IDAHO

1998. The 10th anniversary year for the Idaho Community Foundation. What started with a good idea at Caldwell's Whittenberger Foundation — and was given significant momentum in the early days by grants from the Council on Foundations, the Northwest Area Foundation, the Mott Foundation, and major Idaho companies such as Albertson's, Boise Cascade, and U.S. Bank — has developed into a vital philanthropic resource for Idaho.

Today the Idaho Community Foundation is unique in its ability to serve donors — to help them give back to their communities in whatever way they wish — to pool funds for more efficient management — and to reach into communities all over Idaho with grants aimed at helping these communities help themselves.

Over the past ten years we have enjoyed remarkable support from donors, financial advisors, our investment managers, the media, and the nonprofit community. We are deeply grateful.

In summary, here's what ICF has accomplished in the past 10 years, thanks to the help of people from all over the state and from some who live across our borders. From ground zero on November 10, 1988, we had achieved the following ten year totals at year end 1998:

| | |
|--|----------------|
| Assets | \$24.1 million |
| Dollars Distributed | \$6.5 million |
| Endowment | \$21.1 million |
| Number of Organizations Receiving Grants | 755 |
| Number of Funds Created | 180 |
| Number of Scholarships Provided | 153 |
| Number of Members | 333 |

The special section of this report beginning on page 32 contains an historical account of the Foundation's growth and development, and we hope you will look it over.

THE YEAR IN REVIEW

Turning to the specifics of 1998, the financial highlights are shown below. Twenty-seven new funds were created (see sidebar on this page). Exclusive of special project distributions, our grants increased in 1998 by 37% over the amount granted in 1997, to a total of \$644,256. We continued our partnership with both the J.A. and Kathryn Albertson Foundation and the Steele-Reese Foundation in making grants throughout Idaho from special project funds created by these foundations.

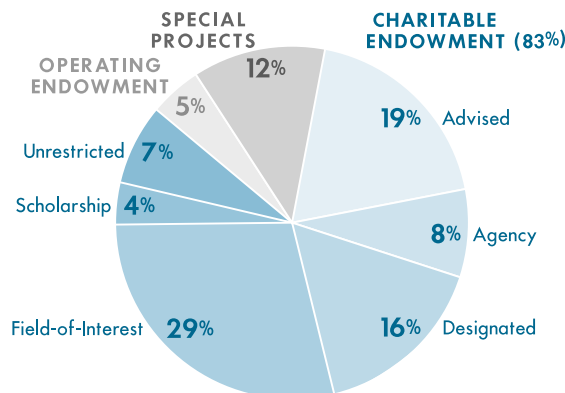
ICF BRANCHED OUT IN NEW DIRECTIONS IN 1998.

- We entered into our first supporting organization affiliation through a relationship with the Kissler Family Foundation, which was created by James A. Kissler, Boise, with a gift of \$3.6 million in Norco stock. A supporting organization is similar to an endowed, donor advised fund, but permits the donor to continue managing the assets of the supporting organization and to have more discretion in the pursuit of its affairs than would be the case with an advised fund. ICF named a majority of the directors to the Kissler Family Foundation board, and we will be learning through this new relationship how to serve the donor community in yet another way.

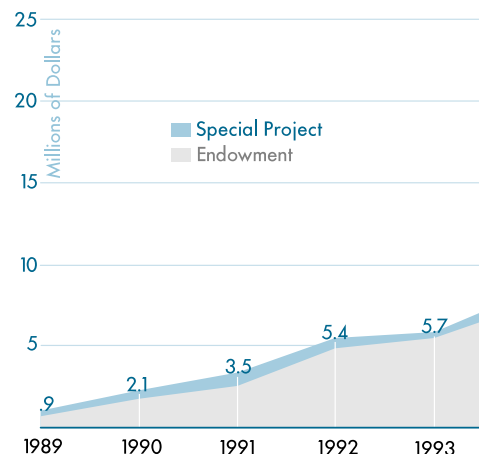
- ICF also began offering Philanthropic Gift Funds. These are nonendowed funds which

1998 ASSETS OF THE FOUNDATION BY TYPE OF FUND

(\$24.1 million total assets)



GROWTH: TOTAL



Service to Idaho

may be spent down in their entirety. We expect these funds to prove useful to people wishing to make contributions at the most advantageous time from a tax standpoint, then to advise ICF on distributions from the funds at times of their choosing while using the Foundation's services to actually write the checks.

– We received our first gift of land — some residential lots in Idaho County donated by Del Moore of Grangeville. When the lots are sold, the proceeds will become a designated fund to benefit two Grangeville nonprofits. Betty Weston of Boise also donated land — an interest in a piece of commercial property. The interest has been sold, and the proceeds are going into a fund which Mrs. Weston will advise.

MAKING GOOD THINGS HAPPEN

Our largest single gift during the year came from Nif and Sue Sullivan of Sun Valley and Palm Desert, who created a \$1 million endowment to benefit Hope House, a shelter in Canyon County for children needing a warm, caring, home-like environment. The work being done at Hope House by founder Donnalee Velvick and her team symbolizes so much of what is good about Idaho, and the help the Sullivans are giving to Hope House is symbolic of Idaho's ability to care and to share.

While welcoming gifts like the Sullivans', ICF has taken great satisfaction this past year in working with the donors who created 26 other new funds, ranging in size from \$5,000 to \$95,000. More and more ICF is becoming

the catalyst for making good things happen — for donors large and small and for communities all over Idaho.

We celebrated the Foundation's 10th anniversary with gatherings of Foundation members, donors, and friends in Hayden Lake, Boise, Twin Falls, Pocatello, and Idaho Falls. They were wonderful evenings of looking back and looking ahead to the future. And that future is a challenging one since the board has established a goal for the Foundation of having \$50 million in assets in the year 2000.

Anyone — absolutely, anyone — can be a philanthropist. It doesn't take a lot of money, just the desire to give back to this wonderful community we call Idaho. The Idaho Community Foundation is here to help anyone who has that desire.



Park Price III
Chairman




Alice Hennessey
President and Executive Director



1998 DISTRIBUTIONS

From Unrestricted, Advised, and Field-of-Interest Funds \$375,535*

| | |
|---|-------------|
| Grant requests received | 506 |
| Grant requests approved | 222 |
| Percent of grant requests approved | 44% |
| Total amount of dollars requested | \$1,842,047 |
| Percent of dollars requested that were approved | 20% |

(See graph at bottom for Distribution of Grants by Charitable Field.)

From Scholarship Funds \$93,620

| | |
|---------------------------------|----|
| Number of scholarships provided | 34 |
|---------------------------------|----|

From Designated and Special Project Funds \$1,338,445

| | |
|--|-----------|
| Colonial Theater Project Fund, Idaho Falls | \$151,684 |
| Steele-Reese Foundation Special Project Fund | \$51,671 |
| J.A. and Kathryn Albertson Education Fund | \$735,000 |

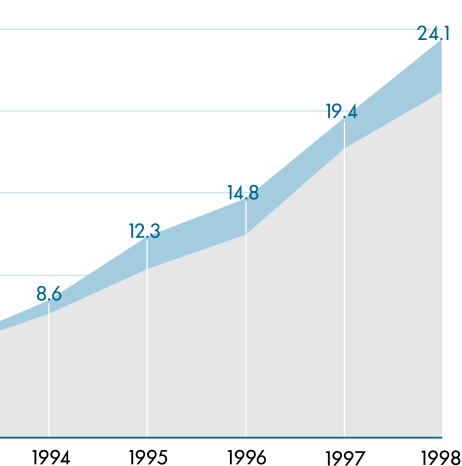
| | |
|---|-------------|
| Grant requests received | 253 |
| Grant requests approved | 108 |
| Percent of grant requests approved | 43% |
| Total amount of dollars requested | \$2,789,952 |
| Percent of dollars requested that were approved | 26% |

Total Distributions \$1,807,600

All grants and other distributions received the review and approval of the Idaho Community Foundation board of directors.

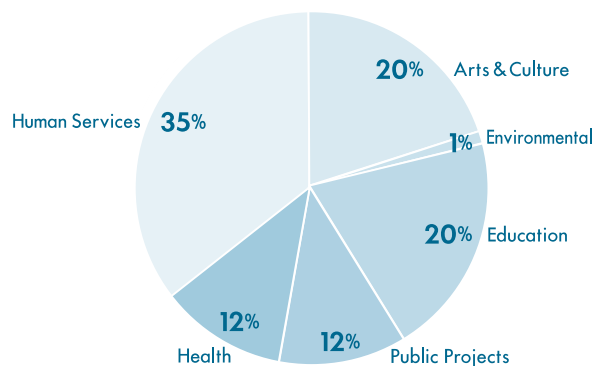
*Excludes approved challenge grants not paid in 1998.

ASSETS AT YEAR END



1998 DISTRIBUTION OF GRANTS BY CHARITABLE FIELD

(From Unrestricted, Advised, and Field-of-Interest Funds.)



FRIEND OF THE FOUNDATION

Each year the Idaho Community Foundation recognizes with its Friend of the Foundation Award someone whose support has been critically important to the Foundation. Such a person is Warren McCain, our 1998 Friend of the Foundation.

Warren's strength as a business leader is legendary. Under his leadership as CEO, Albertson's sales grew from \$900 million annually to \$8 billion and the company's earnings from \$9 million to \$200 million.

Warren served as a member of the steering committee which explored the possibility of a community foundation for Idaho. He was an incorporator of the Foundation in 1988 and has been a member ever since.

Recognizing ICF's potential to serve all regions of our state, Warren — as Albertson's CEO — was responsible for the company establishing field-of-interest funds to benefit Northern, Eastern, and Southwestern Idaho. Each fund required a match from its region in order to be activated, and thus provided an incentive for others to contribute as well.

Warren personally established a \$1 million endowed fund designated to benefit a middle school named in his honor in Payette. After exploring the various financial and administrative aspects of establishing a private foundation, Warren then decided that instead, he and his wife would establish an advised fund in the Idaho Community Foundation to handle most of their charitable giving. The McCains contributed \$1.5 million to ICF to create the Bernie and Warren McCain Fund, which is advised by the McCains and their two daughters.

Through awarding our Friend of the Foundation award to Warren, we expressed our appreciation for his support, his vision of what the Foundation could become, and the benefits his generosity is making possible for Idaho.

Previous recipients:

- 1995 John Chapman, Hailey
- 1996 Miles Willard, Idaho Falls
- 1997 Jane and Arthur Oppenheimer, Boise



Warren McCain,
1998 Friend of the
Foundation

A PUBLIC CHARITY FROM PRIVATE DONATIONS

The Idaho Community Foundation is a public charity established in 1988 and funded with private donations.

It fulfills its mission of improving the quality of life for all Idahoans — forever — by attracting, pooling, and managing a collection of charitable funds, primarily endowments. Distributions are made to charitable organizations with the approval of the Foundation's board of directors and in accord with donor intent.

Endowment of the Foundation has grown to \$21.2 million, and ICF has distributed more than \$6.5 million since grantmaking began in 1991. Total assets, which vary from year to year depending upon the amount of special project funds being held or paid out by the Foundation, were \$24.1 million at year end 1998.

The first community foundation was created in 1914 in Cleveland, Ohio, and more than 500 exist today. The Idaho Community Foundation is unusual, however, in being one of a relatively few community foundations serving a state-wide mission (most others serve a city, county, or region.)

ICF is governed by a voluntary board of directors representing Idaho's diverse geography. (See page 41 for a list of directors.) Members serve for limited terms without compensation, and each director has had extensive personal involvement in civic affairs.

A truly statewide scope is ensured through the Foundation's bylaws, which provide that none of the state's three regions — Northern, Eastern, or Southwestern — can have less than 25% or more than 48% of the Foundation's membership or board.

A fund in the foundation is an account created by the contribution of a donor or group of donors. At year end

WE EXPRESSED OUR
APPRECIATION FOR HIS
SUPPORT, HIS VISION OF
WHAT THE FOUNDATION
COULD BECOME, AND
THE BENEFITS HIS
GENEROSITY IS MAKING
POSSIBLE FOR IDAHO.

Foundation

1998, ICF held 180 individual funds, of which 163 were permanent endowments. Each fund carries a name chosen by the donor or donors. That name and the guidelines established when the fund is created become its distinguishing characteristics. (See page 17 for a complete list of ICF funds.)

Anyone can create a Foundation fund. Individuals, companies, nonprofit organizations, and other foundations have made gifts — both large and small. Donors understand the efficiencies of benefiting the community of Idaho by pooling funds for more economic administration and greater investment return. (See page 5 for options in the creation of funds.)

DONORS UNDERSTAND THE EFFICIENCIES OF BENEFITING THE COMMUNITY OF IDAHO BY POOLING FUNDS FOR MORE ECONOMIC ADMINISTRATION AND GREATER INVESTMENT RETURN.

A person need not be wealthy to establish a “named fund” in the Foundation. Such a fund can be established with a minimum contribution of \$5,000 in assets (or a pledge payable within a maximum of five years.) Any donor can add any amount to their own, or to other established funds, as it suits personal or tax planning goals.

ICF makes grants to a wide variety of nonprofit groups. (See page 2 for a breakdown of grants by funding category.)

Charities statewide benefit from Foundation giving. Over 750 separate charitable organizations in all of the state’s 44 counties have received grants from ICF. (See page 8 for a review of 1998 grants, listed by county.)

The Foundation makes grants to fund activities, services, and projects of

established 501(c) charitable organizations or governmental units or their subsidiaries. It considers requests for grants from its unrestricted, advised, and field-of-interest funds on a regional basis. Applications from the Northern Region are accepted November 1 – February 1; from the East, February 1 – May 1; and from the Southwest May 1 – August 1. (The grant-making process is described in detail in a separate brochure, available on request.)

Assets are managed under the guidance of an investment committee established by the board. (See page 41 for membership on the investment and other standing committees.) The Total Return Concept column on this page explains the ICF investment philosophy. (A brochure providing further details of ICF’s investment and distribution policy is available on request.)

Donors give to a particular charity through ICF because the Foundation deals primarily with permanent endowment funds, so it offers donors perpetual oversight and assurance that earnings from their funds will always be used the way the donors intended, even as specific agencies may come and go. ICF provides economies of scale in the areas of fund management and grantmaking that may not be offered by other charities. Also, an endowment in ICF provides a stream of income to a favorite charity as opposed to a lump sum payment which may be spent in a single year.

Serving donors is the starting point for a community foundation. Without development of an adequate donor base, service to the community through grant-making activities cannot be provided.

THE TOTAL RETURN CONCEPT

The Foundation has adopted the total return concept (TRC) for the long-term management of its endowment assets.

Under the TRC, asset values at the beginning of the period, plus income, plus appreciation of the assets during the period (total market value), averaged over time, are taken into consideration in determining available grant dollars for each year’s distribution.

THE FOUNDATION HAS ADOPTED THE TOTAL RETURN CONCEPT (TRC) FOR THE LONG-TERM MANAGEMENT OF ITS ENDOWMENT ASSETS.

The TRC allows the Foundation to be consistently responsive to current needs while positioning its funds to maintain purchasing power and grant-making capacity over the long term. By smoothing the market volatility and adjusting the spending rate annually, the Foundation maintains relative stability in the amount of funds available for charitable distribution and provides for increasing contributions over time.

In accordance with the Total Return Concept, the Foundation board establishes a funding level each year which bases distributions on the average market value of an individual fund for the prior 13 quarters. This spending level is independent of earnings in any one year and thus avoids detrimental fluctuations in dollars available for grantmaking.

ICF Provides Donors with *Many Choices*

A CHARITABLE ORGANIZATION CAN PROTECT ITS CAPITAL FOR THE FUTURE AND OBTAIN THE ECONOMIES AND REWARDS OF PARTICIPATING IN A LARGER INVESTMENT POOL BY PLACING ITS ENDOWMENT WITH THE FOUNDATION.



They laugh a lot at ICF grant recipient Camp Hodia, a camp for children with diabetes. Camp Hodia also has an endowment in ICF.

CHOICES:

UNRESTRICTED FUNDS: The donor's gift provides the Foundation with maximum flexibility in meeting needs throughout Idaho. Earnings from an unrestricted fund are distributed at the discretion of ICF's regional advisory panels and board of directors, ensuring that the gift will always address current issues. Contributors of \$5,000 or more have the privilege of naming their fund.

ADVISED FUNDS: Donors of \$25,000 or more may retain the privilege of participating in the selection of beneficiaries of their fund. While IRS regulations require that each final decision must rest with the Foundation's board of directors, the advice given by donors is fully considered.

FIELD-OF-INTEREST FUNDS: This option allows donors of \$25,000 or more to limit grants from their funds to organizations or projects within a particular charitable field, geographic area, or combination thereof. The Foundation determines the annual beneficiaries of these funds within the bounds of the donor's wishes.

DESIGNATED FUNDS: Donors of \$25,000 or more may ensure long-term annual support to the charitable organization chosen at the time of the fund's creation. Should the designated organization cease to exist or become dysfunctional, the Foundation has the contractual ability to redirect the income to achieve the donor's original intent.

SCHOLARSHIP FUNDS: Donors of \$10,000 or more may customize a scholarship fund to reflect the donor's intent to provide educational opportunities for graduates of certain schools, for studies in specific fields, or for programs at particular institutions of higher education.

AGENCY FUNDS: A charitable organization can protect its capital for the future and obtain the economies and rewards of participating in a larger investment pool by placing its endowment with the Foundation. Earnings from the fund are regularly disbursed to the participating agency for use as its board of directors deems appropriate. Contributors may add to the fund with any amount, at any time.

OPERATING ENDOWMENT FUNDS: Earnings generated by these permanent funds help to offset the operating costs of the Foundation and reduce the administrative costs

that might otherwise have to be assessed to other funds of the Foundation. Contributors of \$5,000 or more have the privilege of naming their funds.

ACORN SOCIETY ACCOUNTS: Donors can make donations to an account on a regular basis until attaining the minimum \$5,000 required to create a named fund. The concept allows participation in the Foundation by those with a desire to do something of lasting significance for the Idaho community, but who would prefer to make the contribution over time.

LEGACY SOCIETY/DEFERRED GIFTS: Donors may choose to name the Foundation as beneficiary of a charitable trust, will, bequest, or other deferred giving instrument. Those willing to be recognized are named and thanked in the annual report as members of the Legacy Society. In many instances, the deferred gift donor receives benefits such as income or other use of property during his or her lifetime. Upon the donor's death, the remaining principal is transferred to the Foundation, and the earnings become available for charitable use as specified by the donor. Funds created through deferred gifts offer permanent recognition for the donor's philanthropic service to the community.

PHILANTHROPIC GIFT FUNDS: With a contribution of \$5,000 or more, a donor may establish a nonendowed, fully expendable fund from which the donor or donor-specified advisors may recommend distributions of \$250 or more to any IRS recognized charity at any time. The donor is not required to maintain a minimum balance in the fund. Advantages of such a fund include the ability to make tax-deductible donations of appreciated assets at a time of the donor's choice, thus bypassing capital gains tax liability, while advising on the amount and timing of subsequent gifts from the fund.

SPECIAL PROJECT FUNDS: The Foundation occasionally serves its statewide community by receiving and managing nonendowed funds to support special projects. Such nonendowed gifts differ from endowment in that the initial contribution, as well as the income earned while the assets are held, will be expended in the near future.

SUPPORTING ORGANIZATIONS: These may be created by donors who choose to affiliate

and many *Advantages*

with the Idaho Community Foundation by creating a new entity or transferring an existing fund or private foundation. Supporting organizations maintain their own identities while taking advantage of significant tax savings through their affiliation with ICF. Donors may participate actively in grantmaking and administration of the supporting organization, while receiving the professional support services of the community foundation. ICF may appoint a majority of the directors on the supporting organization's board.

ADVANTAGES:

TAX BENEFITS: The Foundation qualifies as a public charity under federal regulations. Thus, gifts during a donor's lifetime or by bequest to the Idaho Community Foundation are accorded the maximum tax advantages allowed by law. In fact, major gifts to a community foundation may qualify for special tax considerations and, in some cases, may be a superior alternative to creating a private foundation. Potential donors should talk to an estate planning professional about their specific circumstances.

FLEXIBILITY: ICF works with donors and/or financial advisors to create a fund with terms and conditions designed to meet the specific requirements of each individual situation.

ECONOMY AND CONVENIENCE:

There is no charge to create a fund in the Foundation, and a minimum of paperwork is required.

EFFICIENCY: One contribution to the Foundation can address a wide range of needs or interests and can benefit any or a number of charitable organizations. Also, the Foundation takes responsibility for all reports to the Internal Revenue Service and other governmental entities.

EFFECTIVENESS: The Foundation ensures good use of donor gifts through the professional grant research of the staff, the prudent and informed judgment of the regional advisory panels, and the oversight of the board of directors.

GIVING OPTIONS: Almost any asset of value can be considered for a contribution. The Foundation can accept cash, securities, property, closely held stock, or other property. Funds may be established with pledges payable within

five years. Contributions can be made during the donor's lifetime and/or through deferred gifts and bequests.

PERPETUITY: The agreement drawn to create an endowment fund in ICF is surety that the Foundation will honor the donor's charitable intent to benefit the community into perpetuity.

RECOGNITION: Each grant from a fund is identified to the recipient by the name of the donor and/or the name of the fund designated by the donor. Donors can, of course, request anonymity with the assurance that their wishes will be respected.

INVESTMENT EXPERTISE: Donors are assured of professional management of the Foundation's assets by experienced investment professionals.

ACCOUNTABILITY: For investment purposes, endowment funds are pooled in order to receive greater return as a result of lower costs. For accounting and reporting purposes, however, each fund is maintained as an individual, named entity, with separate tracking of earnings, pro rata fees, and grant disbursements. The Foundation's financial records are subject to ongoing oversight by the board of directors and an annual independent audit.

REASONABLE ADMINISTRATIVE FEES:

There is no fee to establish a fund. Most endowment funds are assessed an annual management fee of 1% of the fund's average annual market value. Endowment funds created by nonprofit organizations are annually assessed 1/2 of one percent of the fund's average annual market value. For philanthropic gift funds there is no charge related to monies which remain in the fund for at least six months. ICF, however, retains the earnings on the fund. Monies expended from the philanthropic gift fund in less than six months are charged 2%. For special project funds, which provide for the expenditure of the initial contributions and earnings, ICF assesses 2% of each contribution.



The Idaho Shakespeare Festival brings the Bard to Northern Idaho high schools through an ICF grant funded by the J.A. and Kathryn Albertson Foundation Educational Fund.

EACH GRANT FROM A FUND IS IDENTIFIED TO THE RECIPIENT BY THE NAME OF THE DONOR AND/OR THE NAME OF THE FUND DESIGNATED BY THE DONOR.

Grantmaking to improve the

WE VALUE PARTNERSHIPS

The Idaho Community Foundation is especially appreciative of its partnership with the J.A. and Kathryn Albertson Foundation, whose generous contribution in 1998 made it possible for ICF to distribute a total of \$735,000 in grants for creative education projects in grades K-12. Grants were also made to early childhood and latchkey programs which had a strong educational component. The funds available for grants were divided equally among ICF's Eastern, Northern, and Southwestern Regions and were made in categories of up to \$5,000; \$5,000 to \$10,000; \$10,000 to \$15,000; and \$15,000 to \$25,000.

We are also pleased to be partnering with the Steele-Reese Foundation in making grants for worthwhile projects in rural Idaho. ICF received \$65,000 from Steele-Reese in 1998 to be used for grants in rural Idaho communities in the fields of education, welfare, health, and the humanities.

ICF also appreciates the support of Idaho Power, Key Bank, and two private foundations — The Troxell Fund and The Whittenberger Foundation — which provided part of the funding for ICF's statewide youth involvement project.

The Idaho Community Foundation was established to provide a deeper, broader source of funds for charitable projects in Idaho, and grantmaking is at the heart of the Foundation's activities. **The Foundation has distributed \$6.5 million for worthwhile charitable projects since grantmaking began in 1991.** The grantmaking process gives careful consideration to the wishes of donors who have established funds in the Foundation. The different types of funds available to donors are described on page 5. A separate brochure, available on request, provides details of the grantmaking process.

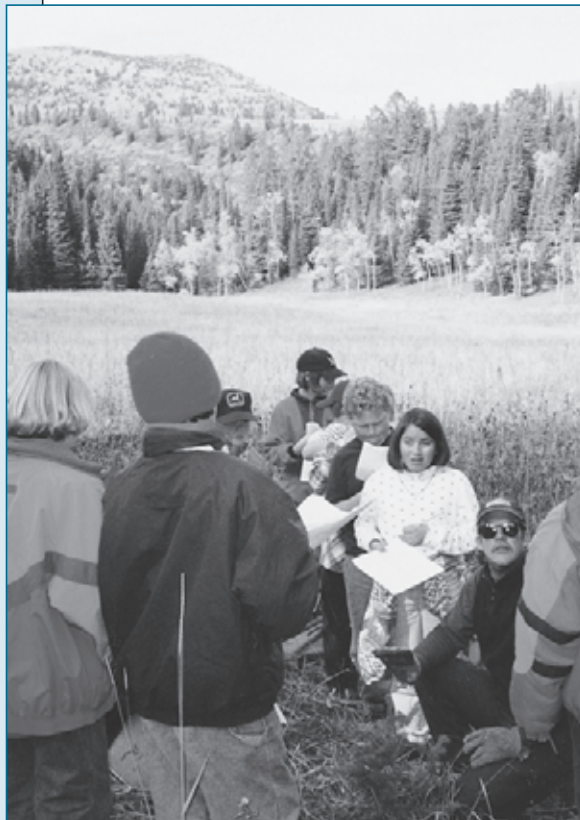
The three regional advisory panels which provide ICF with grass roots knowledge and insight are critical to the success of the Foundation in wisely awarding grants. The Northern, Eastern, and Southwestern Regions of Idaho each has its own panel composed of people who represent communities all across the geographic area

of that region. Selected from outstanding community leaders, these men and women are familiar with community needs and nonprofit organizations in their area and are experienced in analyzing grant applications. Panel members serve on a volunteer basis and provide an informed local forum in which they weigh the pros and cons of competing grant proposals. Members are diligent about maintaining fairness and objectivity in the review process. In 1998, the Idaho Community Foundation received approximately \$3.99 of requests for each dollar available to be granted.

It was the regional advisory panels who had the task of making difficult choices with limited resources, striving to make the best possible grant recommendations for the final approval of the ICF board of directors.

\$1,807,600 DISTRIBUTED IN 1998

Starting on the following page is a list of grants made by the Idaho Community Foundation in 1998. Grants made from unrestricted, advised, field-of-interest, designated, and special project funds are listed first and are grouped by county. These are followed by grants from scholarship and agency funds. Grants from advised funds, designated funds, and special project funds are preceded by an asterisk (*). Grants made from the J.A. and Kathryn Albertson Foundation Educational Fund in the Idaho Community Foundation are designated in the following list by a check mark. (✓)



Learning is better in the great outdoors at the Targhee Institute in Teton County.

Quality of Life in Idaho

MULTIPLE COUNTIES

American Center for Educational Opportunities, Weiser, \$5,000 to help fund the free "Healthy Shots" immunization program for children in rural communities in Adams, Washington, and Payette counties.

***American Lung Association of Idaho**, Boise, \$1,000 for operating needs.

***American Red Cross of Idaho**, Boise, \$6,000 for operating needs.

American Red Cross – Panhandle Chapter, Coeur d'Alene, \$1,000, to implement the "Safe Families" program in five Northern Idaho counties.

✓**Ballet Idaho**, Boise, \$10,000 to expand the Learning Through Dance program which is offered in various public schools.

Big Brothers/Big Sisters of Southwest Idaho, Boise, \$610 to purchase a scanner and video training materials.

C.W. HOG, Pocatello, \$695 to help support this camp for children throughout the state who have disabilities.

✓**Filer Elementary School**, \$4,200 to sponsor an educational walk combining health and history for students at Filer, Buhl, and Hagerman elementary schools.

First Judicial District CASA Program, Inc., Coeur d'Alene, \$2,500 to help fund the salary of a volunteer coordinator for the program in five Northern Idaho counties.

***Idaho Assistive Technology Program**, Moscow, \$4,981 to guarantee loans to disabled individuals to purchase assistive technology devices.

***Idaho Commission on the Blind**, Boise, \$1,000 for operating needs.

Idaho Diabetes Youth Programs, Inc., Boise, \$2,000 to provide scholarships to a camp for children with diabetes.

Idaho Museum of Natural History at Idaho State University, Pocatello, \$700 to sponsor workshops for museum curators in Bannock and Bonneville counties.

***Idaho Peace Officers Memorial**, \$70,575 for expenses associated with constructing a memorial in honor of peace officers killed in the line of duty.

***Idaho Public Television**, Boise, two grants totaling \$2,500 for operating needs.

✓**Idaho Shakespeare Festival**, Boise, \$5,000 to help sponsor the Shakesperience Program in Northern Idaho high schools.

Idaho Special Olympics, Boise, \$2,000 to purchase computer equipment for area offices.

✓**Idaho State 4-H**, Moscow, \$5,000 to help sponsor Know Your Government Conferences.

✓**Inland Northwest Lutheran Outdoor Ministries**, Coeur d'Alene, \$15,000 to develop an outdoor education curriculum for a summer camp serving students from twelve Northern Idaho school districts.

Judicial District VII CASA Program, Inc., Idaho Falls, \$2,500 to help expand the program within the ten-county service area.

✓**Mackay Junior-Senior High School**, \$500 to purchase a fresh water aquarium for a School-to-Work program at the high schools in Arco and Challis.

***National Multiple Sclerosis Society-Idaho Division**, Boise, \$3,250 for assistance to victims of multiple sclerosis.

***Nature Conservancy of Idaho**, Bellevue, two grants totaling \$1,500 for operating needs.

***Northwest Coalition Against Malicious Harassment**, \$9,964 for operating needs of the Idaho Human Rights Network, a state-wide community-based organization, to address the problem of bigotry.

***Planned Parenthood of Idaho**, Boise, \$1,000 for operating needs.

Sixth Judicial District CASA Program, Inc. Pocatello, \$500 for this program serving abused children in a six-county region of Eastern Idaho.

✓**Snowdon Wildlife Sanctuary**, McCall, \$10,000 to integrate wildlife programs into science curricula for six rural public schools in West-central Idaho.

***St. Alphonsus Regional Medical Center**, Boise, \$1,500 to help support Life Flight.

United Cerebral Palsy of Idaho, Boise, \$1,000 to purchase equipment for the state-wide assistive technology loaning library.

ADA COUNTY

***All Saints' Episcopal Church**, Boise, \$1,475 from a designated fund for operating needs.

Alzheimer's Association-Boise/Treasure Valley Chapter, \$5,000 to support the care giver respite program.

✓**Assistance League of Boise**, \$5,000 to support the Operation School Bell Program which provides school clothes to needy children.

***Assistance League of Boise**, \$1,000 to support the Operation School Bell Program which provides school clothes to needy children.

***Ballet Idaho**, Boise, \$2,500 for operating needs.

Basque Museum & Cultural Center, Boise, \$3,500 to install an automatic door system to assist the handicapped.

IN 1998, THE IDAHO
COMMUNITY FOUNDATION
RECEIVED APPROXIMATELY
\$3.99 OF REQUESTS FOR
EACH DOLLAR AVAILABLE
TO BE GRANTED.

Members of Ballet Idaho's scholarship class. An ICF grant is helping Ballet Idaho expand its school outreach program.



Citizens from all over Idaho contributed to ICF to fund the new Idaho Peace Officers Memorial in Boise.

Welcome! An ICF grant has made the door to Boise's Basque Museum and Cultural Center accessible to its handicapped visitors.



ICF funding is helping members of the Boys and Girls Club of Ada County to hone their technical skills by using Legos in an innovative program called the Academy of Engineering.

Boise Art Museum, \$5,000 to support a free school tour program for the 1999-2000 school year.

✓**Boise Family YMCA**, \$25,000 to provide a music instructor for the YMCA-operated child development centers.

***Boise Family YMCA**, \$4,000 for operating needs.

***Boise Neighborhood Housing Services**, \$1,500 for operating needs and to support the Homeward Bound Program.

***Boise Philharmonic Association**, \$1,000 for operating needs.

***Boise Public Schools Education Foundation**, \$1,000 for operating needs.

***Boise Rescue Mission**, \$3,000 for operating needs.

***Boise Valley Select Basketball**, \$138 for operating needs.

***Boy Scout Troop 45**, Boise, \$138 for operating needs.

***Boys and Girls Club of Ada County**, Garden City, \$25,000 pledge payable over five years for the organization's capital campaign.

✓**Boys and Girls Club of Ada County**, Garden City, \$12,500 to initiate a hands-on Lego mechanical engineering program.

***Boys and Girls Club of Ada County**, Garden City, \$5,000 for operating needs.

***Central District Health Department**, Boise, \$138 for the senior Meals-on-Wheels program.

***Children's Home Society**, Boise, \$1,000 for operating needs.

***Community House**, Boise, \$3,000 for operating needs.

***Community Youth Connection**, Boise, \$1,235 for operating needs.

***Discovery Center of Idaho**, Boise, \$138 for operating needs.

***Eagle United Methodist Church**, \$500 for operating needs.

***East Boise Little League**, \$500 to support the National League.

***Esther Simplot Performing Arts Academy**, Boise, \$1,000 for operating needs.

***Esther Simplot Performing Arts Academy**, Boise, \$69,999 from a designated fund for operating needs.

***Family Advocate Program**, \$1,000 for operating needs.

***Family Wellness Center**, Boise, \$138 for operating needs.

***First Methodist Church**, Boise, \$3,000 for operating needs.

***Garden City Library**, two grants totaling \$2,500 to support the Bells for Books Program.

Giraffe Laugh Child Care Center, Boise, \$1,530 to help purchase a van for the child care center.

Idaho Anne Frank Human Rights Center, Boise, \$1,000 to help sponsor special lecture events.

***Idaho Anne Frank Human Rights Center**, Boise, \$250 to help sponsor a lecture by a Holocaust survivor.

***Idaho Botanical Garden**, Boise, \$300 for operating needs.

***Idaho Endowment for Youth Activities Foundation**, Boise, \$138 for operating needs.

***Idaho Foodbank Warehouse**, Boise, \$2,000 for operating needs.

***Idaho Humane Society**, Boise, five grants totaling \$6,638 for operating needs.

***Idaho Hunger Action Council**, Boise, \$1,000 for operating needs.

***Idaho Museum of Mining and Geology**, Boise, \$500 for operating needs.

***Idaho Shakespeare Festival**, Boise, \$10,000 to support the organization's capital campaign.

***Idaho Shakespeare Festival**, Boise, \$1,000 for operating needs.

***Idaho Theater for Youth**, Boise, \$1,000 for operating needs.

***Idaho Youth Ranch**, Boise, \$1,000 for operating needs.

***Idaho Youth Ranch**, Boise, \$2,500 to install a new phone system at Hays Shelter Home.

Kuna Emergency Medical Services, \$1,000 to purchase equipment and supplies for a program to revitalize fire fighters who are combating large fires.

✓**Kuna High School**, \$8,460 to purchase large band instruments.

***Learning Lab**, Boise, two grants, each for \$1,000, for operating needs.

✓**Meridian Middle School**, \$16,825 to sponsor "Math is a Work of Art" program.

***Meridian Education Foundation**, \$1,000 for operating needs.

***Ministry to the Aged, Inc.**, Boise, \$1,000 for operating needs.

***Mountain States Tumor Institute**, Boise, \$500 for operating needs.

***Opera Idaho**, Boise, two grants totaling \$3,500 for operating needs.

***Operation Night Vision**, Boise, \$25,000 to purchase special helmets used by fire fighters which enable them to see through thick smoke.

***Parents and Youth Against Drug Abuse, Inc.**, Boise, \$2,000 for operating needs.

***Salvation Army**, Boise, \$4,000 for operating needs.

***Sawtooth Society**, Boise, \$500 for operating needs.

Grants

***South Boise Little League**, \$138 for operating needs.

***St. Luke's Medical Center**, Boise, \$1,000 to help sponsor the "Kid for a Night" fundraising event.

***St. Mary's Church and School**, Boise, \$3,500 for operating needs.

***Terry Reilly Health Services**, Boise, \$1,000 to support the Sexual Abuse Now Ended Program.

***United Cerebral Palsy of Idaho**, Boise, \$4,000 to purchase equipment for the technology loaning library which serves individuals with disabilities.

United Cerebral Palsy of Idaho, Boise, \$250 to develop a soccer team for youth 6-18 with and without disabilities.

***United Way of Ada County**, Boise, \$10,000 for the 1998-99 Campaign.

***United Way of Ada County**, Boise, \$500 to support the Success by Six Program.

✓**Ustick Elementary School**, Meridian, \$735 to fund a special history program for 4th-5th graders.

***Women's and Children's Alliance Crisis Center**, Boise, two grants totaling \$3,138 for operating needs.

***Zoo Boise**, \$500 for operating needs.

ADAMS COUNTY

✓**Council Booster Club**, \$6,500 to help purchase and install lights for the outdoor field track at the community's school.

Meadows Valley Ambulance, New Meadows, \$2,000 to help purchase an ambulance with extrication equipment.

BANNOCK COUNTY

City of Downey, \$3,000 to help equip a new Quick Response Unit.

Downey Public Library, \$975 to purchase educational videos.

✓**Franklin Junior High School**, Pocatello, \$4,560 to purchase equipment for a technology center in one science classroom.

✓**Idaho Fish & Wildlife Foundation**, Boise, \$5,000 to purchase materials for a wildlife education program in Pocatello.

***Idaho State University Foundation**, Pocatello, \$138 for operating needs.

✓**Irving Junior High School**, Pocatello, \$15,000 to purchase video production equipment.

Lava Hot Springs Senior Citizens Center, \$1,018 to purchase six round folding tables.

✓**Lincoln Elementary School**, Pocatello, \$1,125 to purchase educational software.

Our Gathering Place, Pocatello, \$2,500 to develop a student art park.

Planned Parenthood Association of Idaho, Boise, \$2,500 to help sponsor "Kids Need to Know" workshops in Pocatello.

Pocatello Free Dental Clinic, \$5,000 to purchase dental supplies.

Pocatello Women's Correctional Center, \$990 to cover the expenses for the clay art therapy program.

Pocatello Zoo, \$2,500 to help develop a nature trail.

South Bannock Community Center, Downey, \$1,000 to purchase kitchen equipment for the senior center.

BEAR LAKE COUNTY

✓**Bear Lake County School District**, Paris, \$16,796 to purchase educational software for four elementary schools.

✓**Bear Lake High School**, Montpelier, \$2,280 to sponsor a laboratory manual for the honors course.

✓**Bear Lake High School**, Montpelier, \$8,800 to purchase a welder and accompanying cylinders for the ag science department.

Bear Lake Memorial Hospital, Montpelier, \$5,000 to help purchase and install a security monitoring system.

✓**Bear Lake School District #33**, Montpelier, \$9,500 to purchase materials for "Try it at Home" take home kits.

City of Georgetown, \$1,000 to purchase playground equipment for the city park.

***KISU-Public Television**, Pocatello, \$2,566 from a designated fund for operating needs.

✓**National Oregon Trail Center**, Montpelier, \$7,538 to develop an expanded social studies curriculum.

BENEWAH COUNTY

✓**Plummer/Worley Joint School District**, Plummer, \$3,650 to support an after school program.

St. Maries Ambulance Association, \$2,650 to purchase a manikin for CPR training.

✓**St. Maries Middle School**, \$1,000 to underwrite student book coupons for use at the book fair.

BINGHAM COUNTY

Bingham Memorial Hospital, Blackfoot, \$2,500 for instructors' expenses for a teen pregnancy prevention program.

Blackfoot Community Players, \$2,500 to remodel the downstairs dressing rooms in the theater.

Blackfoot High School, \$665 to help improve the school's unfinished softball diamonds.

✓**Blackfoot Sixth Grade School**, \$1,000 to purchase stage lighting for the auditorium.



An ICF grant to a welding class at Bear Lake High School brought out student creativity, as demonstrated in this piece of welded art.

Under the auspices of Gnomus, Inc., Sandpoint High School students are learning carpentry skills by building a house. An ICF grant funded by the J.A. and Kathryn Albertson Foundation Educational Fund is assisting the program.



An ICF grant is helping the Idaho City Historical Society with its restoration of the Pon Yam House.

North Bingham County District Library, Shelley, \$2,005 to purchase books in Spanish.

✓**Riverside Elementary School**, Blackfoot, \$2,565 to purchase books for the literature program.

***Snake River Middle School**, Blackfoot, \$240 to purchase material for a geography class.

BLAINE COUNTY

Advocates for Survivors of Domestic Violence, Hailey, \$2,500 to provide seed money for a program for children of abused women.

Blaine County Recreation District, Hailey, \$2,500 to expand the summer youth program.

Canine Companions for Independence, Ketchum, \$2,500 to provide partial sponsorship for a Canine Companion for a handicapped person.

Crisis Hotline, Ketchum, \$1,400 to provide volunteer training.

Hailey Public Library, \$1,845 to improve the shelving, signage, and seating.

Hospice of the Wood River Valley, Ketchum, \$2,800 to train two registered nurses in Hospice Nursing.

Rotarun Ski Club, Inc., Hailey, \$3,100 to purchase timing equipment.

BOISE COUNTY

Crouch Volunteer Ambulance Service, Inc., Garden Valley, \$1,500 to purchase extrication equipment and provide training.

Garden Valley District Library, \$600 to develop a preschool reading and learning program.

Horseshoe Bend District Library, \$1,000 to provide the fees to join an audio book circuit.

Horseshoe Bend Fire Protection District, \$1,500 to purchase paggers.

Idaho City Ambulance, \$1,000 to purchase winter emergency rescue equipment.

Idaho City Historical Foundation, Inc., \$4,000 to help restore the historic Pon Yam House.

Lowman Ambulance, \$450 to purchase a special stretcher used in mountain rescues.

BONNER COUNTY

Bonner Community Food Center, Sandpoint, \$3,000 to provide emergency food boxes, shelter, and energy cost sharing to needy families.

✓**Community Assistance League of Sandpoint**, \$2,100 to help sponsor an art education program for 3rd-4th graders in the county.

Festival at Sandpoint, \$875 to underwrite the family concert study guide and program.

✓**Gnomus, Inc.**, Sandpoint, \$25,000 to help sponsor a vocational carpentry program at Sandpoint High School.

✓**Kinderhaven, Inc.**, Sandpoint, \$4,355 to develop a program for children ages 5-12 in the shelter home.

Priest River Public Library, \$1,000 to purchase materials to enhance the children's programs.

✓**Sandpoint Community Christian School**, \$4,428 to create a resource center by upgrading the library.

Solutions Group, Sandpoint, \$1,000 to help sponsor a two-day community event promoting uses of solar power.

✓**Tri-State Implementation Council**, Sandpoint, \$2,000 to help sponsor a natural resources educational program.

***Washington Elementary School**, Sandpoint, \$216 to purchase materials for a geography class.

BONNEVILLE COUNTY

✓**Ammon Elementary School**, Idaho Falls, \$1,000 to purchase and install playground equipment.

Eastern Idaho Special Service Agency, Idaho Falls, \$5,000 to upgrade the computer and software used in the family literacy program.

Eastern Idaho Special Service Agency, Idaho Falls, \$683 to purchase winter clothing for needy children.

✓**Ethel Boyes Elementary School**, Idaho Falls, \$1,450 to purchase educational software programs.

✓**Fairview High School**, Idaho Falls, \$760 to purchase equipment for a ropes course.

Family Assistance in Transitional Housing, Idaho Falls, \$500 to purchase children's books for the FAITH library.

Homemaker Services of Idaho, Inc., Idaho Falls, \$1,000 to provide training for the homemaker staff.

***Idaho Falls Arts Council**, \$151,684 for the renovation of the historic Colonial Theater and an adjacent building in downtown Idaho Falls into a facility for the performing and visual arts.

✓**Idaho Falls Arts Council**, \$3,300 to fund an art education program for elementary teachers.

***Idaho Falls Opera Theater**, \$5,000 to help underwrite the 1998-99 season.

Idaho Falls Public Library, \$900 to update the Adult Basic Reader section.

✓**Idaho Falls School District #91**, \$1,900 to provide GED program workbooks and materials for the juvenile detention center.

Idaho Falls Symphony Society, Inc., \$1,000 to provide the fees for a guest musician.

Grants

***Idaho Falls Unitarian**

Fellowship, \$20,000 to underwrite a full-time administrative position.

✓**Linden Park Elementary School**, Idaho Falls, \$6,760 to purchase materials for a fine arts program.

Rape Response & Crime Victim Center, Inc., Idaho Falls, \$2,500 to underwrite a series of school/community presentations on sexual assault prevention.

Salvation Army of Idaho Falls, \$2,500 to purchase two computers for the after-school program.

Salvation Army of Idaho Falls, \$683 to purchase winter clothing for needy children.

Seniors and Disabled IN NEED, Idaho Falls, \$1,015 to help support a prescription medicine program for needy and low-income seniors.

✓**Skyline High School**, Idaho Falls, \$23,220 to make improvements to the school's little theater.

✓**Theresa Bunker Elementary School**, Idaho Falls, \$5,250 to purchase software for the beginning literacy program.

✓**Ucon Elementary School**, \$19,835 to purchase equipment and supplies for classroom science labs.

BOUNDARY COUNTY

Boundary County, Bonners Ferry, \$1,000 to help construct a skateboard park and ice skating rink.

✓**Naples Elementary School**, Naples, \$17,500 to provide training in the Quality Schools Specialist program for the principal and staff.

✓**Valley View Elementary School**, Bonners Ferry, \$700 to provide 20 scholarships to the After School Academy latch-key program.

BUTTE COUNTY

✓**Arco Elementary School**, Arco, \$5,000 to help purchase a sound system for the auditorium.

Lost Rivers Emergency Medical Technicians, Arco, \$3,300 to purchase a defibrillator unit.

CAMAS COUNTY

✓**Camas County PTA**, Fairfield, \$4,500 to purchase non-consumable art supplies for grades K-8.

✓**Camas County School District**, Fairfield, \$4,910 to purchase field study and lab simulation equipment to implement the Willow Creek Watershed Restoration and Education Project.

CANYON COUNTY

***Albertson College of Idaho**, Caldwell, \$20,000 pledge payable over five years for the McCain Student Center.

Caldwell Chamber of Commerce, \$4,500 to support the Youth Leadership Program.

✓**Caldwell Fine Arts Series**, \$11,450 to help sponsor Artist in Residence programs in Canyon County schools.

✓**Gem State Academy**, Caldwell, \$10,000 to purchase equipment for the physics lab.

Idaho Theater for Youth, Boise, \$5,000 to help sponsor a bi-lingual theater program in Caldwell.

***Idaho Working Partners**, Boise, \$1,000 to provide Christmas gifts for residents of Hope House in Nampa.

Mercy Housing Idaho, Nampa, \$2,100 to support a program to improve two city parks.

Middleton Public Library, \$1,000 to purchase World Book Encyclopedias and nonfiction literature.

Notus Public Library, \$3,500 to create junior reference and adult learning centers.

✓**Salvation Army**, Nampa, \$9,811 to expand the after-school Homework Club from 3 to 5 days.

Silver Sage Girl Scout Council, Boise, \$2,100 to support an Hispanic outreach program in Canyon County.

Southwest District Health Department, Caldwell, \$500 to develop an adolescent pregnancy prevention program.

✓**Wilder School District**, \$16,420 to help sponsor an after-school tutoring program.

✓**Zion Lutheran School**, Nampa, \$1,800 to purchase math, science, and geography manipulative materials.

CARIBOU COUNTY

Caribou County Healthy Community Partnership, Soda Springs, \$3,000 to help provide Healthwise Handbooks to county residents.

Caribou County Senior Center, Soda Springs, \$2,500 to purchase a dishwasher and sterilizer.

✓**North Gem High School**, Bancroft, \$4,500 to purchase books and materials for an Emergent Literacy Program.

✓**North Gem School District**, Bancroft, \$1,875 to purchase materials for an after-school geography program.

CASSIA COUNTY

***Declo High School**, \$230 to purchase materials for a geography class.

Malta Ambulance, \$2,000 to purchase a new cot and oxygen bottles for the ambulance.

✓**Sawtooth Science Institute**, Sun Valley, \$7,000 to provide special technology training for teachers in Cassia County.

YOUNG PEOPLE ARE DEVELOPING LEADERSHIP SKILLS THROUGH OUR 1998 STATEWIDE YOUTH INVOLVEMENT PROJECT:

WE FUNDED PROJECTS IN WHICH YOUNG PEOPLE TOOK A LEADERSHIP ROLE IN IDENTIFYING A COMMUNITY PROBLEM, PROPOSING A SOLUTION, RAISING FUNDS TO MATCH THE GRANT, AND THEN IMPLEMENTING THE SOLUTION.



The Girl Scouts are reaching out and involving Hispanic girls in Canyon County.

CLARK COUNTY

✓**Clark County High School**, Dubois, \$5,000 to purchase a laptop computer for network training.

CLEARWATER COUNTY

✓**Dworshak Fisheries Complex**, Ahsahka, \$850 to purchase materials to support a special education program.

***Orofino Elementary School**, \$290 to purchase materials for a geography class.

✓**Orofino Joint School District**, Weippe, \$15,802 to build a Lewis & Clark Expedition resource collection.

Pierce Free Public Library, \$590 to purchase preschool storytime kits for day care providers.

***Pierce School**, \$240 to purchase materials for a geography class.

Teen Alliance, Orofino, \$1,850 to purchase equipment for teen programs.

✓**Timberline High School**, Weippe, \$15,500 to build a greenhouse to strengthen the science curriculum.

CUSTER COUNTY

✓**Challis Middle School**, \$4,926 to purchase materials to construct an outdoor basketball and rollerblade court.

Stanley Community Library, \$1,000 to purchase books and supplies for the children's program.

✓**Stanley School Parents Club**, \$1,000 to enhance the arts program through Artist in Residence programs.

ELMORE COUNTY

Atlanta Quick Response Unit, \$1,680 to purchase a defibrillator and provide training.

FRANKLIN COUNTY

✓**Oakwood/Pioneer Elementary School**, Preston, \$10,110 to purchase equipment, teachers'

guides, and materials for the music programs.

✓**Preston School District**, \$25,000 to provide partial start-up costs for an alternative high school.

FREMONT COUNTY

✓**North and South Fremont High Schools**, Ashton, \$4,470 to purchase multicultural books.

GEM COUNTY

✓**Butte View Elementary School**, Emmett, \$10,298 to update the school library.

Emmett Optimist Club, \$5,000 to help construct a basketball court.

Emmett Public Library, \$4,000 to purchase books and cataloging supplies.

Emmett Public School Foundation/Project Graduation, \$2,500 to help sponsor a drug and alcohol-free graduation party.

Gem County Ambulance, Emmett, \$3,500 to purchase extrication equipment.

Gem County Fair Board, Emmett, \$5,000 to help install a new fence in the arena area.

Gem County Recreation District, Emmett, \$3,314 to purchase rubber tile for the city swimming pool.

Gem County Senior Citizens, Emmett, \$5,000 to help purchase a van.

Gem Economic Development Association, Emmett, \$500 to provide funds to advertise the Farmers' Market.

Gem Economic Development Association, Emmett, \$1,556 to provide expenses for the 1999 Summer Concerts in the Park program.

✓**Project Starfish**, Emmett, \$5,000 to sponsor an outdoor summer school for at-risk students.

Project Starfish, Emmett, \$1,000 to purchase sound equipment for the community playhouse.

Project Starfish, Emmett, \$4,000 to create an "activities fund" for at-risk youth and fund a feasibility study for a Big Brothers/Sisters program.

✓**Sweet-Montour Elementary School**, \$350 to implement a nutrition program.

✓**Sweet-Montour Elementary School Library**, \$5,000 to purchase a catalog and circulation system for the school library.

GOODING COUNTY

✓**Idaho School for the Deaf & Blind**, Gooding, \$1,730 to convert the photography department to digital processing.

Walker Center, Gooding, \$2,500 to provide scholarships to this substance abuse treatment center for indigent and low-income clients.

IDAHO COUNTY

✓**Clearwater Valley Schools**, Kooskia, \$10,000 to continue the children's theater latch key program.

Elk City School and Community Library, \$3,000 to purchase books to increase the library collection.

✓**Grangeville Joint School District**, \$10,000 to implement a parent involvement program.

✓**Salmon River Junior-Senior High School**, Riggins, \$14,800 to help underwrite the costs for a school resource officer.

Salmon River Emergency Medical Service, Riggins, \$2,893 to purchase a vital signs monitor.

✓**University of Idaho Cooperative Extension System**, Grangeville, \$10,000 to expand the after school program and provide scholarships to low-income children.



Students in Weippe are building a Lewis and Clark Expedition resource collection, and an ICF grant is a resource for the students.

Grants

JEFFERSON COUNTY

*Midway Middle School, Menan, \$250 to purchase materials for a geography class.

✓Roberts City Library, \$8,500 to purchase books for the new homework center at the library.

JEROME COUNTY

Jerome City Library, \$1,700 to purchase a storage unit and enhance the children's programs.

✓Jerome Kindergarten Center, \$5,100 to fund a multiple intelligences art curriculum.

KOOTENAI COUNTY

Association for the Preservation of the Old Cataldo Mission, Cataldo, \$2,000 to help paint the exterior of this historic mission.

Borah Elementary School, Coeur d'Alene, \$2,484 to purchase a Music Workstation and music software.

Bryan Elementary School, Coeur d'Alene, \$1,000 to implement a special parent involvement program.

Canyon Elementary School, Cataldo, \$9,700 to purchase equipment, software, and literature for the SHARE program.

Coeur d'Alene School District #271, \$4,298 to provide training and materials for the School PLUS program.

Coeur d'Alene School District #271, \$4,153 to purchase equipment for the Outdoor Education Program.

Fernan Elementary School, Coeur d'Alene, \$1,790 to purchase equipment and supplies for the Cyber Botany science program.

Kids Voting Idaho, Hayden, \$5,000 to help sponsor this citizenship program in Kootenai County schools.

Post Falls KinderCenter, \$2,575 to purchase materials for a parent involvement program.

✓Post Falls School District, \$10,000 to expand the Books in a Bag program to all second graders in the school district.

Rose Lake Quick Response Unit, Cataldo, \$410 to purchase a special stretcher.

Spirit Lake Elementary School, \$5,000 to purchase a home-school reading program.

✓Winton Elementary School, Coeur d'Alene, \$8,985 to provide supplies, training, and software to implement a new math program.

Women's Center, Inc., Coeur d'Alene, \$1,176 to install a comprehensive security system at the crisis center.

LATAH COUNTY

✓A.B. McDonald Elementary School, Moscow, \$2,730 to support a special program in conjunction with the senior center.

Bovill Library Youth Corps, \$1,000 to help complete story-time area at new library.

✓City of Moscow, \$3,000 to implement a worm composting program at public schools in Latah County.

✓Genesee School District #282, \$2,645 to support a community health education program.

✓Moscow High School, \$900 to publish a literary arts magazine.

✓Moscow School District #281, \$3,000 to underwrite a summer program for grades K-6.

✓Potlatch School District #285, \$900 to purchase a TV, VCR, and videos for the counseling office.

Sojourners' Alliance, Moscow, \$600 to purchase a TV and VCR for health education programs.

LEMHI COUNTY

✓Patterson Elementary School, May, \$150 to purchase books for the "Book Bag" reading project.

LEWIS COUNTY

✓Highland School District #305, Craigmont, \$4,900 to help sponsor an artist in residence program.

Lewis County Historical Society, Kamiah, \$1,000 to build display cases for the museum's collections.

✓Nezperce Joint School District #302, \$10,800 to purchase reference materials to upgrade the library.

LINCOLN COUNTY

American Legion Post #1, Richfield, \$2,000 to install a ramp to assist the handicapped in the Legion hall which is used for community events.

MADISON COUNTY

✓Adams Elementary School, Rexburg, \$6,000 to purchase musical instruments and a portable stage.

✓Hibbard and Burton Elementary Schools, Rexburg, \$4,000 to purchase manipulatives for math teachers.

*Madison County Senior Citizens Center, Rexburg, \$1,675 from a designated fund for operating needs.

✓Madison High School, Rexburg, \$2,800 to purchase supplies for a new journalism program.

✓Madison High School, Rexburg, \$5,000 to purchase equipment for the library.

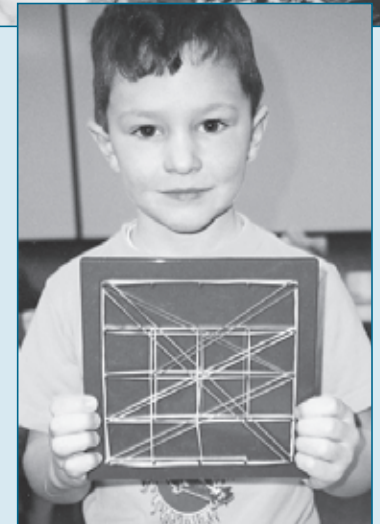
✓Madison Middle School, Rexburg, \$1,680 to purchase books for the literature collection.

Upper Valley Industries, Rexburg, \$2,500 to purchase an automatic pallet nailer.

MINIDOKA COUNTY

*Idaho Youth Ranch, Rupert, \$1,475 for operating needs.

A slumber party? No — it's a "read-in" at May's Patterson Elementary School in Lemhi County, using ICF-provided books.



Students at Burton Elementary in Rexburg are enjoying the variety and challenge provided by their new math manipulatives.

The artist at work and part of the finished product — the mural on the highly visible exterior wall of the Lewis and Clark Center for Arts and History in Lewiston.



The Bruneau Legion Hall will remain a gathering place for folks like this, thanks to an ICF grant which is providing much needed repairs to the floor.

Mini-Cassia Child Protection Team, Burley, \$2,500 to help fund an after-school latchkey program in Paul.

***St. Nicholas Catholic School**, Rupert, \$1,035 from a designated fund for operating needs.

NEZ PERCE COUNTY

Habitat for Humanity-Lewiston/Clarkston, \$1,000 to purchase building materials for a Habitat home.

Lewis-Clark Center for Arts & History, Lewiston, \$2,000 to help complete an exterior mural on the Center wall.

✓**Lewiston High School**, Lewiston, \$5,000 to purchase electronic lab stations for the auto technology class.

Lewiston Independent Foundation for Education, \$2,150 to repair and restore DeMolay Park.

Nez Perce/Lewis County Free Library District, Lapwai, \$1,788 to create preschool story time kits for day care providers.

✓**St. Stanislaus Tri-Parish School**, Lewiston, \$5,000 to implement the Learning Network Program in grades K-6.

✓**Whitman Elementary School**, Lewiston, \$9,300 to purchase multi-level reading materials and shelving.

ONEIDA COUNTY

Oneida County Hospital, Malad, \$2,500 to purchase a lift chair and a scale for the long-term care facility.

✓**Oneida Education Foundation**, Malad, \$3,000 to replace the sound system at Malad High School.

Oneida Youth at Risk, Malad, \$1,760 to provide training for the Youth Mentoring Program and assist with operational expenses.

OWYHEE COUNTY

Bruneau American Legion Post #83, Bruneau, \$5,000 to help replace the floor in the Legion Hall which is used as the community center.

Eastern Owyhee County Library, Grand View, \$3,886 to remodel the facility to provide a quiet reading room.

Homedale Ambulance, \$1,800 to purchase equipment and provide training.

Homedale Public Library, \$1,000 to purchase books on tape and large print books.

✓**Marsing Elementary School**, \$25,000 to support a latchkey tutoring program.

PAYETTE COUNTY

New Plymouth Middle School, \$1,485 to create a student art gallery.

✓**Payette High School**, \$4,930 to provide equipment for the new Career Center.

***Payette High School**, \$1,000 for use by the Business Club.

***Warren E. McCain Middle School**, Payette, \$52,370 from a designated fund for projects at this school.

POWER COUNTY

✓**Rockland School District #382**, \$8,300 to purchase brass and percussion instruments for the ensemble program.

✓**Rockland School District #382**, \$2,500 to purchase materials and supplies for a special faculty training program.

William Thomas Middle School, American Falls,

\$2,500 to support an after-school parent and student homework and activities project.

SHOSHONE COUNTY

✓**Mullan School District #392**, \$8,500 to establish a school lunch program.

✓**Pinehurst Elementary School**, \$6,350 to upgrade the encyclopedias and dictionaries for grades 1-3.

✓**Silver Hills Middle School**, Osburn, \$1,000 to create an audio library.

Taft Tunnel Preservation Society, Wallace, \$1,000 to develop a capital campaign strategy.

U.S. Forest Service, Coeur d'Alene, \$2,000 to repair two historic cabins in Shoshone County.

Wallace District Mining Museum, \$917 to purchase a flat file cabinet.

✓**Wallace Elementary Early Learning Center**, \$5,000 to consolidate the library and upgrade its materials.

TETON COUNTY

✓**Targhee Institute**, Driggs, \$3,050 to support a science outreach program.

Teton Valley Hospital, Driggs, \$2,090 to sponsor a series of parenting classes and to assist with the operations of a support group.

TWIN FALLS COUNTY

***American Red Cross-Magic Valley Chapter**, Twin Falls, \$1,000 for operating needs.

✓**Boys and Girls Clubs of Magic Valley**, Twin Falls, \$10,000 to support the Power Hour After School Tutoring Program.

Grants

✓**Buhl High School**, \$2,478 to provide transportation for two field trips for a special program aimed at significantly improving the school's graduation rate.

Castleford Men's Club, \$2,500 to help build covered picnic shelters in the city park.

***College of Southern Idaho Foundation**, Twin Falls, \$3,000 to support the college's program for the deaf, its meals-on-wheels program, and operating needs.

***First Church of Christ Scientist**, Twin Falls, \$500 for operating needs.

Interfaith Volunteer Caregivers, Twin Falls, \$4,000 to provide funds for operating expenses.

✓**Kimberly Elementary School**, \$710 to purchase materials for spelling centers for the first grade.

Magic Valley Marrow Donor Program, Twin Falls, \$2,500 to provide funds for operating expenses.

***Magic Valley Symphony Orchestra**, Twin Falls, \$1,000 for operating needs.

***People for Pets**, Twin Falls, \$500 for operating needs.

***Salvation Army**, Twin Falls, \$500 for operating needs.

✓**South Central Community Action Agency**, Twin Falls, \$5,000 to purchase school supplies for low-income students.

Twin Falls County Ike Kistler Safe House, \$2,500 to fund a Cognitive Change Program at the youth home.

***Twin Falls Public Library Foundation**, \$2,600 for operating needs.

Valley House/Twin Falls, \$2,500 to purchase a computer, monitor, printer, fax, and materials.

VALLEY COUNTY

Cascade Medical Center Foundation, \$4,912 to purchase an emergency room table.

Cascade Parks and Recreation, \$2,500 to help construct a play structure for the sports park.

Intermountain Regional Learning Center, McCall, \$5,000 to help support the community education program.

McCall Arts & Humanities Council, \$1,000 to help support a summer education program for youth.

✓**McCall Elementary School**, \$4,293 to purchase a variety of software and materials to enhance the school's technology programs for grades 2-5.

McCall Public Library, \$2,000 to renovate an office into a library reference room.

McCall Recreation Department, \$750 to repair the roof which covers the Sk8park, a youth recreation facility.

Shepherd's Home, McCall, \$4,000 to establish an activities fund for the residents of this home for disadvantaged youth.

WASHINGTON COUNTY

Boise State University Adult Basic Education Outreach, Nampa, \$5,000 to upgrade used computers and provide expenses for the program in Weiser.

OTHER GRANTS FROM ENDOWMENT

***American Cancer Society-Elko Chapter**, \$500 for operating needs.

***American Lung Association of Nevada**, \$500 for operating needs.

***American Red Cross-Goldstrike Chapter**, \$1,000 for operating needs.

***Brigham Young University**, \$1,000 for operating needs.

***Nature Conservancy-Nevada**, \$500 for operating needs.

***Peteetneet Academy**, Payson, Utah, \$1,000 for operating needs.

***Primary Children's Hospital of Salt Lake City**, \$500 for operating needs.

***Salvation Army of Elko County**, \$1,000 for operating needs.

***United Negro College Fund**, \$1,000 for operating needs.

***University of San Francisco**, \$1,000 for operating needs.

DISTRIBUTIONS FROM AGENCY ENDOWMENT FUNDS:

Twenty-five nonprofit organizations have created endowment funds within the Idaho Community Foundation in order to benefit from the perpetuity, administrative efficiencies, cost effectiveness, and access to investment expertise provided by participation in ICF's pooled funds. Disbursements are made from these funds to the organizations which created them and are used at the discretion of the board of directors of each charitable agency. An organization may request that no distributions take place until the fund reaches a specific market value.

1998 distributions were as follows:

Boise Family YMCA, \$21,653

Boise Philharmonic Association, \$5,821

Caldwell Fine Arts Series, \$361

First Presbyterian Church of Idaho Falls, \$2,500

Idaho Falls Ducks Unlimited Trust, \$252

Idaho Museum of Mining and Geology, \$275

Idaho School for the Deaf & Blind, \$1,252

Learning Lab, Inc., \$5,434

Nampa Public Library, \$1,355

St. John's Episcopal Church, \$356

United Way of Ada County, Inc., \$6,313

DISTRIBUTIONS FROM SCHOLARSHIP FUNDS:

Albertson College of Idaho, \$5,926

Biola University, \$1,000

Boise State University, \$36,688

College of Southern Idaho, \$868

Eastern Idaho Technical College, \$2,950

Idaho State University, \$16,473

North Idaho College, \$1,000

Lewis and Clark State College, \$1,330

University of Alaska, \$445

University of Colorado, \$445

University of Idaho, \$25,935

Whitman College, \$560

The 180 Funds of the Idaho

FOUNDATION FLEXIBILITY

The flexibility of the Idaho Community Foundation allows each donor to create a fund that fits his, her, or that organization's particular interests. Individuals, private foundations, corporations, and charitable organizations can establish funds through charitable trusts, by will, or through the transfer of assets.

Funds created in the Foundation work continually through the ICF distribution process to improve the communities about which we all care. Fund creators may also structure their funds so that some of the distributions go to charitable projects outside Idaho.

Funds in the Idaho Community Foundation as of December 31, 1998, are described below. The list of 1998 grant recipients and purposes for which grants were made can be found beginning on page 8 of this annual report.

The date after each fund name indicates the year in which the fund was established.



Whit and Paula Jones wanted an unrestricted endowment fund.

ENDOWMENTS

UNRESTRICTED FUNDS

The Idaho Community Foundation contains the following unrestricted funds with endowments of **\$500,000-\$999,999**:

J.A. and Kathryn Albertson Fund-1990

The Albertson gift creating this fund was earmarked for broad charitable giving throughout Idaho.

The Idaho Community Foundation contains the following unrestricted funds with endowments of **\$100,000-\$249,999**:

Charles Stewart Mott Charitable Fund-1990

This fund was created as a challenge grant in recognition of the importance that unrestricted giving has for a responsive community foundation.

The Idaho Community Foundation contains the following unrestricted funds with endowments of **less than \$100,000**:

Amalgamated Sugar Company Charitable Fund-1992

The earnings from this fund are distributed to meet the most critical needs of the state.

Deer Creek Endowment Fund-1995

Lynn and Tom Campion established their fund in collaboration with the Helen K. and Arthur E. Johnson Foundation of Colorado and the Campion Foundation.

Tom and Alice Hennessey Fund-1992

Charitable giving from this fund is directed at meeting needs statewide.

IJA Productions Fund-1994

Distributions from the fund will support a wide range of charitable activities throughout the state.

Whit and Paula Jones Fund-1991

This fund is designed to give maximum flexibility to meet community needs as they change over time.

Tom and Sheila Richards and John and Joy Richards Fund-1991

This family fund is used for projects selected by the regional advisory panels of the Foundation.

Alice and John Roper Fund-1992

This fund continues the tradition of support for Idaho established by this Twin Falls couple.

Whittenberger Foundation Fund-1988

This fund was established through a challenge grant when the Foundation was created. The fund was designed to enhance unrestricted charitable giving and continues to do so.

Community Trust Fund-1990

This fund was created by the Idaho Community Foundation to receive contributions of both modest and great amounts from a wide range of donors. Contributors to this fund are assured that the earnings will be used in perpetuity to meet charitable needs of Idaho.

Some donors to the Community Trust Fund do so by establishing Acorn Society accounts, to which they contribute regularly over a period of time.

Donors who contribute \$5,000 or more to the Community Trust Fund can elect to name their fund. The Community Trust Fund currently contains the following named funds:

Anonymous I Fund-1996

Elton Earle Beamish Memorial Fund-1996

Don J. Black Memorial Fund-1996

1998 contributor:

Louise F. Beatty

Cally Galpin Fund-1997

Sheila Hennessey and Ern Blackwelder Fund-1998

William and Glenn C. Janss Fund-1990

Gordon C. and Frances B. Randall Memorial Fund-1989

Ray and Linda Stark Fund-1997

Other contributors to the Community Trust Fund during 1998:

Larry Bird

Mr. and Mrs. V.K. Brassey

Greg and Tricia Crockett

John B. Fery

Margaret Gigray

Marvin C. Greenwalt

Mrs. J. Kenneth Helferty

Tom and Alice Hennessey

Mr. and Mrs. G. Nicholas Ifft

Bessie Katsilometes

Keller, Young & Grover LLP

in honor of Roger A. Martell

Irv and Trudy Littman

Jeanette S. Miller

Pitney Bowes

Park Price Jr.

Park and Sharon Price

Mr. and Mrs. John Rosholt

Memorials to the Community Trust Fund during 1998 were given in honor of:

Irene Aitchison

Jean C. Archibald

Gladys Barbour

Don Bell

Bjarne Bergesen

Wayne Booe

Imogene Carson

Louis H. Cosho

Michael Day

Esther L. Duvall

Debbie Fields

Henrietta Young Fraser

Thor Fraser

Community *Foundation*

Memorials, continued:

Tom Hannity
Janet Hansen
Eldora Gettman Harland
Gerald Herrick
Vernon Hersberger
George V. Hjort
George T. Johnson, Jr.
John Kovats
James Lilly
Ernest Lumley
Donna O'Dell
Jesse Peavey
Betty Maxey Reese
Dorothy Sherlock
Linda Shockey
Mel Singley
Thomas A. Spofford
MelloDee Thornton
Robert Troxell
Jerry Weber
Arlie L. Woods
Jerry Zimmerman

ADVISED FUNDS

The Idaho Community Foundation contains the following advised funds with endowments of **\$1,000,000-\$2,500,000:**

Bernie and Warren McCain Fund-1996

Created by this long-time Idaho couple to provide a permanent contribution to the quality of life in Idaho, the donors and their daughters recommend grant recipients.

The Idaho Community Foundation contains the following advised funds with endowments of **\$500,000-\$999,999:**

Archie B. Teater Fund for the Handicapped-1994

This fund was established with the transfer of assets, primarily in the form of artwork, from an existing nonprofit organization created at the request of the late artist. The Idaho

Community Foundation is marketing the Teater paintings in order to provide cash to the fund. Donations from the fund will benefit the needs of handicapped youth in Idaho.

The Idaho Community Foundation contains the following advised funds with endowments of **\$250,000-\$499,999:**

Ralph and Mary Lynn Hartwell Family Fund-1997

This fund was established by the Idaho Falls couple with a gift of closely-held stock. Mr. and Mrs. Hartwell and their children retain the privilege of recommending grant recipients from the fund during their lifetimes.

Albert H. and Juanita F. Huber Fund-1995

Established by this Jackpot, Nevada, couple to ensure that their life-long commitment to charitable activities will continue far into the future. Upon the death of the donors, distributions from this fund will be designated to benefit a wide variety of organizations in Idaho and Nevada.

The Idaho Community Foundation contains the following advised funds with endowments of **\$100,000-\$249,999:**

Harry Bettis Fund-1991

The fund's purpose is to support charitable activities throughout Idaho that meet current and emerging needs. Upon the death of the advisors, this fund will be placed in the unrestricted endowment of the Foundation.

John B. and Delores L. Fery Fund-1989

Advice on use of the fund will continue during the couple's and their children's lifetimes. Upon the death of the advisors, this fund will be placed in the unrestricted endowment of the Foundation.

Arthur and Jane Oppenheimer Fund-1988

This was the first fund created in the Foundation by individuals. The donors provide advice in preparation for distribution of grants.

Rogers and Hazel Rose Fund-1995

Established by this Idaho Falls couple, distributions from the fund benefit charitable needs in Eastern Idaho.

The Idaho Community Foundation contains the following advised funds with endowments of **less than \$100,000:**

Anonymous Fund III-1992

The family creating this fund requested that no disbursements take place until it reaches a specified amount.

Duane and Lola Hagadone Fund-1998

Created to benefit organizations in the four Northern counties of Bonner, Boundary, Kootenai, and Shoshone. Mr. and Mrs. Hagadone will retain the privilege of advising ICF's board of directors on the annual distributions from the fund during their lifetimes.

Hormaechea Family Fund-1992

Advice on distribution from this fund, established by Richard M. and Mary B. Hormaechea, is given by the donors. Upon their death, funds will transferred to the unrestricted endowment.

The Fund for Joe's Kids-1998

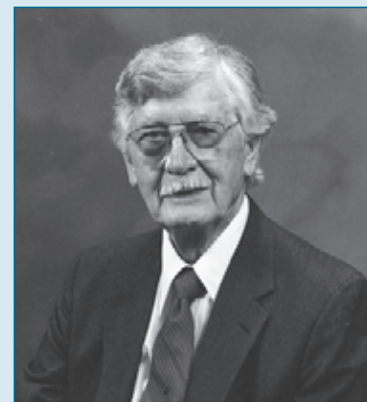
Created by the family and friends of the late Joe Cenarrusa to ensure that the children's programs he had championed will be continued in perpetuity.

1998 contributors:

Philip E. Batt
John A. Burke
Herb R. Carlson
Jean Cenarrusa



ICF is selling the paintings of Idaho artist Archie Teater to create an advised fund benefiting handicapped children.



Al Huber, Jackpot, Nevada, has an advised fund in ICF.



Caldwell's Whittenberger Foundation created ICF's first endowment — an unrestricted fund, which allows the ICF board to respond to needs anywhere in Idaho. Jane and Arthur Oppenheimer's advised fund was the first ICF endowment created by individuals.

The 180 Funds of the Idaho



Joe Cenarrusa loved kids. The advised fund created in his memory continues Joe's work with young people.



The advised fund created by Mary Jane and Jim Kinney honors her father, Guy Shearer.



J.R. Simplot established a fund designated to support the Esther Simplot Performing Arts Academy, named for his wife.

The Fund for Joe's Kids-1998, 1998 contributors continued:

Pete and Freda Cenarrusa
Fern S. Coates
Vicki Murphy
Red Robin International
Red Robin, South Sound
Gwenith H. Wilber
Charlie and Cynthia Wilcox

Lex and Celia Kunau Fund-1998

Created by this Burley couple, distributions from the fund will be used to support charitable activities in Cassia County. Mr. and Mrs. Kunau will advise ICF's board of directors on the annual beneficiaries from the fund during their lifetimes.

Merrill Lynch & Co. Foundation, Inc. Fund-1991
Distributions from this fund are made with the advice of the resident vice president of the company's Boise office.

David and Vaniece Petso Family Fund-1991

At the donors' request, no disbursements are being made until the fund reaches a predetermined level.

James A. Pinney Memorial Fund-1996

Established by Ann Erstad to ensure recognition of her great grandfather's contributions to the early development of Boise with his 1881 election as the city's ninth mayor and to his development of cultural programs in the region through construction and operation of the Columbia and Pinney Theaters. Grants from the fund will be made to theater arts groups in the South-western Region when the fund reaches a predetermined level.

Robert and Dorothy Rebholtz Fund-1992

The donors chose the Foundation to carry out charitable activities on their behalf while retaining the ability to help select its beneficiaries.

Harold E. Rumsey Fund-1994
The donor and family members recommend grant recipients

Guy H. Shearer Memorial Fund-1995

Mary Jane and Jim Kinney established this fund to ensure recognition of her father's contribution to development of Twin Falls County as founder of Filer State Bank in 1908 (merged with Idaho First National Bank).

The Terteling Company, Inc. Fund-1990

Advisors to this fund depend on advice of the regional advisory panels in making distributions.

Robert I. and Barbara Troxell Fund-1998

Created by Mrs. Troxell in part to memorialize her late husband. The fund will be advised by the trustees of The Troxell Fund, Inc., a private foundation.

H.R. and Betty Weston Fund-1998

Created by this Boise resident to support a wide variety of organizations in the Treasure Valley area. Ms. Weston will retain the privilege of advising ICF's board of directors on the annual beneficiaries of the fund.

Lane Williams Memorial Fund-1993

This fund will support organizations providing sports and recreation opportunities for youth in Blaine County. No disbursements will be made until a specified amount has been attained.

1998 contributors:

Canine Companions for Independence
Dana L. Perkins
St. Thomas Episcopal Church

DONOR DESIGNATED FUNDS

The Idaho Community Foundation contains the following donor designated funds with endowments of **\$1,000,000-\$2,500,000:**

Esther Simplot Performing Arts Academy Endowment Fund-1992

Earnings from this endowed fund established by J.R. Simplot are disbursed regularly to defray operating costs of the Academy named for his wife.

Nif and Sue Sullivan Fund- 1998

Distributions from this fund will provide an annual gift to Hope House, a shelter in Canyon County established to help children needing a warm, caring environment.

1998 contributor:

Helen J. Williams

Warren E. and Bernie McCain Fund-1990

Proceeds from the fund are made available to the Warren E. McCain Middle School in Payette for use at the discretion of the school's administrators.

The Idaho Community Foundation contains the following donor designated funds with endowments of **less than \$100,000:**

Board Brothers Fund-1993

Proceeds from this fund will be used for structural maintenance of the historic Immanuel Episcopal Church in Hailey. No disbursements are being made until a specified amount has been attained.

Robert L. Cook Memorial Fund-1997

Created to memorialize a long-time resident of Idaho Falls and his support of needy individuals during the holiday season, grants from this fund will be made to the Idaho Falls Goodfellows.

Robert P. and Mary H. Evans Fund-1992

Proceeds from this fund are designated for distribution in support of the St. Nicholas Catholic School in Rupert.

Community *Foundation*

Roger and Sybil Ferguson Fund-1990

Madison County Senior Citizens are beneficiaries of this gift with proceeds disbursed annually to the organization's board for use in meeting critical needs.

Maxine Elliott Kussy Forget Me Not Fund-1998

Created by this long-time Idaho Falls resident, distributions from the fund will provide an annual gift to the city of Idaho Falls Parks and Recreation Division to be used for beautification of the public parks.

Del Moore Fund-1998

Created through a gift of land in Idaho County, proceeds from the sale of that land will be used to create a fund to benefit two Grangeville non-profit organizations.

Rogers and Hazel Rose Fund for KISU Public TV-1997

This fund was created by this Idaho Falls couple to provide permanent annual income to this charitable organization.

Scottish Rite Learning Center Fund-1998

This fund was created by Hermon King of Burley to provide an annual gift to this Twin Falls organization serving individuals with learning disabilities.

Gilbert C. and Jane B. St. Clair Fund-1997

Created by Mrs. St. Clair in part as a memorial to her late husband, the distributions from this fund will be equally divided between All Saints' Episcopal Church in Boise and the Idaho Youth Ranch in Rupert.

FIELD-OF-INTEREST FUNDS

The Idaho Community Foundation contains the following field-of-interest funds with endowments **over \$2,500,000:**

Walter and Leona Dufresne Fund-1997

Created by the transfer of assets from a private foundation, earnings from the fund will be used to provide scholarships

for worthy men and women in need of financial assistance, prevention of child abuse, crime prevention, promotion of the fine arts, the elimination of poverty, and the enhancement of scientific research.

The Idaho Community Foundation contains the following field-of-interest funds with endowments **of \$500,000-\$999,000:**

Herbert D. McAvoy Fund-1995

Established through a bequest by this Coeur d'Alene resident, the fund benefits educational needs in Kootenai County.

Ethel R. and Ronald Rawlinson Fund-1992

Established through a charitable remainder trust to continue Dr. and Mrs. Rawlinson's lifetime commitment to the Emmett area, grants are made in support of charitable organizations and activities that benefit Gem County.

The Idaho Community Foundation contains the following field-of-interest funds with endowments of **\$250,000-\$499,000:**

Donald W. and Gretchen C. Fraser Fund-1994

Established through a charitable remainder trust, the fund will continue the commitment of the Sun Valley couple to supporting charitable organizations that benefit Blaine County.

Wendell P. and Barbara J. Marshall Family Trust Fund-1994

The fund established by this Pocatello couple benefits charities in the Eastern Region.

The Idaho Community Foundation contains the following field-of-interest funds with endowments of **\$100,000-\$249,000:**

Ifft Eastern Region Fund-1989

Established by G. Nicholas and Sara Ifft as one of the Foundation's earliest funds,

grants from this fund are made in support of charitable organizations and activities in Eastern Idaho.

Sara Maas Fund-1995

Established through a charitable remainder trust, the fund will benefit worthwhile needs in Boise with preference given to programs supporting the arts.

Miles and Virginia Willard Fund-1992

Established by Mr. and Mrs. Willard, grants are to support youth services and/or arts organizations in Eastern Idaho.

The Idaho Community Foundation contains the following field-of-interest funds with endowments of **less than \$100,000:**

Albertson's Eastern Region Fund-1989

Established as one of the challenge grants made to each of the Foundation's three regions, this fund was the first to be matched on a dollar-for-dollar basis and now benefits charities in Eastern Idaho.

Albertson's Northern Region Fund-1989

Earnings from this challenge grant benefit charitable organizations in North Idaho.

Albertson's Southwest Region Fund-1989

Earnings from this challenge grant benefit charitable organizations in Southwestern Idaho.

Assistive Technology Endowment Fund-1997

Created by the transfer of funds from an existing ICF special project fund, this endowment fund will ensure annual support for programs providing assistance to individuals with disabilities who need assistive technology devices.

Leland D. Beckman Foundation Fund-1992

Established by the trustees of this private foundation in

Roger and Sybil Ferguson's designated fund benefits Madison County Senior Citizens, while their advised fund assists education projects.



Idaho Falls parks benefit from Maxine Elliott Kussy's Forget Me Not Fund.



Rod and Hazel Rose have set up an advised fund in ICF. In addition, their designated fund benefits KISU Public TV.

The 180 Funds of the Idaho



Joan Chesbro and her daughters advise the Chesbro Family Music Fund.



Kenlon and Carol Johnson were thinking of needy children in Eastern Idaho when they set up their field-of-interest fund.



The Harry and Colleen Magnuson field-of-interest fund benefits organizations in the city of Wallace.

Leland D. Beckman Foundation Fund-1992, continued:

Idaho Falls, grants from this fund assist charitable activities in the Eastern Region.

Chesbro Family Music Fund-1992

This fund is to support and enhance music in the Eastern Region under advisement of Joan Chesbro and her daughters during their lifetimes.

Jim and Barbara Cimino Fund-1992

Charitable organizations and projects in the Ketchum/Sun Valley area benefit from the generosity of this couple.

Daugherty Foundation Trust Fund-1989

Established by this Idaho Falls private foundation to take advantage of Idaho Community Foundation investment and grantmaking services, distributions from this fund support Eastern Idaho organizations.

Eagle Community Fund-1994

Charitable organizations and projects in the City of Eagle will benefit from this fund. Earnings will be used to grow the fund until a specified amount has been attained.

Roger and Sybil Ferguson Education Fund-1991

Established to benefit innovative educational programs in Madison County schools, the Fergusons participate in the selection of worthy projects to be supported.

Geography Knowledge Permanent Fund-1992

Linda Grable-Curtis established this fund, and she and her husband advise the Foundation on choice of beneficiaries to further the study of geography by Idaho students in the kindergarten, elementary, and junior high grades.

Green Giant Community Fund-1991

Organizations meeting the needs of disadvantaged youth and/or those addressing issues of hunger benefit from this fund. Grants are made in the geographic area in which growers supplying the Buhl company are located.

Kenlon P. and Carol J. Johnson Fund-1992

The fund is to purchase clothing, particularly for winter, for needy children in the Eastern Region.

Harry and Colleen Magnuson Fund-1990

The fund targets charitable organizations and activities in the city of Wallace as beneficiaries.

Peaceful Settlements Foundation Fund-1997

Created when an existing organization decided to dissolve, its remaining assets were given to ICF to create a permanent fund to provide education and services to citizens of Idaho regarding the prevention, management, and/or peaceful resolution of conflict.

Robert W. and Carol A. Reed Fund-1992

Established to further this pioneer family's tradition of philanthropy, the fund benefits charities and their activities in the Magic Valley.

Earl C. and Harriet Reynolds Fund-1990

This fund was created by Mr. Reynolds, in part, as a memorial to his late wife. Distributions from this gift are dedicated to the support of charitable organizations in the Southwestern Region.

Jim and Bette Roper Fund-1990

Established by this life-long Idaho couple, grants from this fund support a broad range of charitable activities in the Southwestern Region.

Jane Sandy Fund-1995

Established by transfer of a trust created in 1963, grants from the fund will be made statewide in support of programs serving disadvantaged youth.

John and Carmelita Spencer Fund-1990

Established by Mrs. Spencer to memorialize her late husband, the fund supports charitable needs in the Northern Region.

Curtis Turner Memorial Fund-1992

Established by Harry Turner to ensure recognition of his father's contribution to the development of Twin Falls and the surrounding area, grants are made to charities in the Magic Valley.

Ed F. Winn Fund-1994

Established through transfer of a trust, grants from the fund are made to benefit the homeless and disadvantaged in Bonneville County.

Youth Trust Fund-1992

Established by the Idaho Community Foundation to respond to needs of disadvantaged and homeless youth between 12 and 18 years of age. The Foundation encourages gifts of any size from any source to this fund.

SCHOLARSHIP FUNDS

The Idaho Community Foundation contains the following scholarship funds with endowments of **\$100,000-\$249,999:**

Lewis and Jeannette Hower Fund-1992

The fund was created to benefit Idaho students, preferably from the Emmett area, planning to major in journalism at the University of Idaho and/or music at Albertson College of Idaho.

Wood River Odd Fellows & Rebekahs Scholarship Fund-1996

Created by Alturas Lodge #13, I.O.O.F. and Snowdrop Rebekah Lodge #71 with the

Community *Foundation*

proceeds from the sale of their building, the fund will provide scholarships for graduates in the Wood River Valley who choose to attend a college, university, vocational, or technical school in Idaho.

1998 contributors:

Claudine Anderson in memory of James L. Glenn
Wayne Crosby in memory of James L. Glenn
Don Levin
Snowdrop Rebekah Lodge #71

The Idaho Community Foundation contains the following scholarship funds with endowments of **less than \$100,000:**

Mary Fran Aguirre Academic Scholarship Fund-1998

Created by Felipe Aguirre in honor of his wife to provide scholarships to graduating seniors of Mountain Home High School.

Boise Branch, American Association of University Women Inez Robb Scholarship Fund-1997

Created to memorialize the former journalist who bequeathed funds to that organization to provide scholarships to Boise State University juniors or seniors.

1998 contributors:

American Association of University Women, Boise
Mr. and Mrs. Clarence Brissenden
Patricia Pontefract
Ethel Ruman

Daugherty Foundation-ISU Education Scholarship Fund-1991

The fund recognizes Idaho juniors or above at Idaho State University who meet high academic standards.

Paul and Jo Easterbrook Scholarship Fund-1997

Created by this Emmett couple

to provide scholarships to graduating seniors of a Gem County high school who are pursuing a bachelor's degree at any Idaho institution of higher learning.

Eastern Idaho Technical College Scholarship Fund-1993

Established by the Daugherty Foundation, scholarships will benefit students attending Eastern Idaho Technical College at Idaho Falls.

Irma Frisch Farrington Fund-1993

The fund memorializes Ms. Farrington's sister and brother-in-law through creation of the Alice Wolfe Art Scholarship and the George V. Wolfe Pre-Law Scholarship at Albertson College of Idaho.

Alois and Marie Goldmann Memorial Scholarship Fund-1997

Created by the George and Mary Freund family of Idaho Falls to memorialize his grandparents who were killed during World War II at Auschwitz.

1998 contributors:

Gordon and Pamela Lassahn in memory of Lily Hansen
Ruth Stevens

Gooding High School Class of 1956 Scholarship Fund-1996

Created by the 1956 graduating class, the fund will provide scholarships to graduating seniors of the school. Awards will begin once the fund reaches a predetermined level.

1998 contributors:

Walter C. Bickett
Royce Chigbrow
Gooding Seed Company
John E. (Jack) Roy
Mary Lou Ruby

Donovan and Evelyn Grable Memorial Scholarship Fund-1990

Established by Linda Grable-Curtis as a memorial to her parents, this fund recognizes her mother's lifelong interests by assisting students of the Business and Office Education Program in the College of Technology at Boise State University.

Steve and Donna Guerber Scholarship Fund-1994

Proceeds from this fund will benefit mass communications students at Idaho State University. No awards are being made until a specified amount has been attained.

James and Rose Helebrant Education Scholarship Fund-1991

Established by transfer of a trust, scholarships are awarded to financially needy Buhl High School graduates for educational expenses at a college or university of their choice.

Idaho Press Club-Don Watkins Memorial Scholarship Fund-1992

Established to recognize former journalist and political consultant Don Watkins, scholarships are awarded to graduates of Idaho high schools pursuing careers in journalism or communications who have completed at least one year of college study.

1998 contributor:

Kevin M. Roche

Idaho State Council of Trout Unlimited Graduate Scholarship Fund-1998

Distributions from the fund will provide scholarships to students pursuing a graduate research project that involves native or endemic cold-water fish.

Alvie C. Jeffres Memorial Scholarship Fund-1997

This fund was created by June Jeffres Robertson of Sandpoint



The field-of-interest fund established by Carmelita Spencer supports charities in Northern Idaho.



George and Mary Freund and their children created a scholarship in memory of his grandparents, Alois and Marie Goldmann.



Donovan and Evelyn Grable were memorialized with a scholarship fund created by their daughter, Linda Grable-Curtis.

The 180 Funds of the Idaho

Alvie C. Jeffres Memorial Scholarship Fund-1997, continued:

in memory of her late husband. Distributions from the fund provide scholarships to worthy students in Bonner County. Mrs. Robertson and descendants of Mr. Jeffres serve on the selection committee that chooses the recipients.

Nora Johnson Memorial Fund-1990

Established by the New Plymouth Kiwanis Club in conjunction with the Dorothy L. White Memorial Scholarship, this fund assists graduates of New Plymouth High School with their first year of study at any Idaho institution of higher learning.

J. Carl Mattson Scholarship Fund-1997

Created by the transfer of an existing trust, the fund will provide vocational agricultural scholarships to students of the Firth School District.

Mountain Home High School Class of 1960 Trust Fund-1995

Established by transfer of a trust, scholarships are awarded to graduating Mountain Home High School seniors for educational expenses at a college or university of their choice.

Dan and Ruth Panko Memorial Fund-1995

Established by their family in memory of this couple, long associated with the Idaho Old Time Fiddlers. Scholarships are awarded to high school graduates active in that organization to attend college, with preference given to Idaho State University.

Jim Poore Memorial Scholarship Fund-1994

Established to recognize the former Idaho Statesman sports editor. Scholarships are awarded to college journalism students who attended high school in Idaho.

Idaho Power Company-Douglas E. Sprenger Memorial Scholarship Fund-1995

Established by Idaho Power Company in memory of this long-time employee and engineer, a scholarship will be awarded from the fund to a graduate of an accredited high school in the company's service territory to attend a college, university, or technical school.

Idaho Power Company-Larry R. Wimer Memorial Scholarship Fund-1996

Established by Idaho Power Company in memory of this long-time employee, a scholarship is awarded from this fund to a graduate of an accredited high school in the company's service territory to attend a college, university, or technical school.

1998 contributors:

All West Aviation Services, Inc.

Idaho Power Company

Frances Reed Purkhiser Memorial Scholarship Fund-1996

Established by Paul and Judith Schultz in memory of her mother, the fund will honor this outstanding New Plymouth school teacher by providing scholarships to graduating seniors of that community's high school.

Sonja Tarnay Educational Fund-1998

This fund was created in memory of this Sun Valley resident. Distributions from the fund will provide scholarships to graduating seniors of Wood River Valley high schools who are pursuing careers in the visual and/or performing arts.

Robert C. Weaver Memorial Scholarship Fund-1991

Established by Neola Weaver in memory of her late husband, residents or former residents of Buhl are eligible for scholarship support as either traditional or nontraditional students.

Dorothy L. White Memorial Scholarship Fund

Established in 1990 by the New Plymouth Kiwanis Club as a permanent memorial, earnings from the fund assist graduates of New Plymouth High School with their first year of study at an institution of higher learning.

AGENCY ENDOWMENT FUNDS

Established by nonprofit organizations to take advantage of Idaho Community Foundation investment and administrative services, earnings from these funds are disbursed to the founding agencies for use as their boards of directors deem appropriate.

The Idaho Community Foundation contains the following agency funds with assets of **\$500,000-\$999,999:**

Boise Family YMCA Endowment Fund-1993

Established to assure ongoing operating support for the Boise Family YMCA.

The Idaho Community Foundation contains the following agency funds with endowments of **\$100,000-\$249,999:**

Boise Philharmonic Association Fund-1990

Established to assure ongoing operating support for the Boise Philharmonic Association.

Learning Lab, Inc. Endowment Fund-1997

Established to ensure permanence for a gift to this organization, distributions from the fund will support its ongoing operating needs.

United Way of Ada County-Gustav Linning Endowment Fund-1995

Established with an initial gift from the estate of Gustav Linning, distributions from the fund will support ongoing operating needs of United Way of Ada County.



Alvie Jeffres will be remembered in perpetuity through a scholarship established by his wife, June Jeffres Robertson.



Each year the friends of legendary Idaho Statesman sports editor Jim Poore hold a golf tournament. Its proceeds benefit the scholarship fund which honors him.

Community *Foundation*

The Idaho Community Foundation contains the following agency funds with endowments of **less than \$100,000:**

Aid For Friends Endowment Fund-1997

Established to assure ongoing operating support for this Pocatello organization which serves the homeless and low-income individuals.

1998 contributors:

Anonymous (1)
Mr. and Mrs. Clayton Bergmeier
Terry Bergmeier
John and Mary Borglund
Aloha V. Bozzi
Phyllis Brown
Coldwell Banker Landmark Real Estate
Community Animal Hospital
John and Evelyn Dingman
Joan K. Downing
Electric Construction & Sales, Inc.
Michael and Georgianna Gregson
Carrol and Arita Hanson
Idaho State Sigma Sigma Sigma
Idaho State University Speech and Hearing
Mr. and Mrs. G. Nicholas Ifft
Cary V. Jackson
Paula Jones
Mr. and Mrs. William Kelly
Knights of Columbus, Pocatello
Kruse Insurance, Inc.
Irene Lawrence
Michael and Sheila McHugh
Dr. and Mrs. Andrew W. McRoberts
Richard and Lois Nimtz
Dana Olson-Elle

Robert G. and Judy M. Patterson
Pocatello Orthopedics & Sports Medicine Institute
Purrington, Inc.
Bruce and Alice Ronald
Rotary Club of Pocatello
Sixth Judicial Bar Association
Elizabeth Stoltz in memory of Carrol Strommer
Dee and Kristi Sucher
TCI Cable

Mary V. Arnold Fund for the Idaho Falls Symphony-1997

Created by the transfer of an existing trust, the fund provides annual support to the Idaho Falls Symphony.

Caldwell Fine Arts Series Endowment Fund-1990

Established to assure ongoing operating support for the Caldwell Fine Arts Series.

1998 contributors:

Ted Colwell
Dr. and Mrs. Richard Roberge

Camp Hodia Endowment Fund-1998

Created by the Idaho Diabetes Youth Program, Inc., this fund will provide annual operating support for the camp serving Idaho youth with diabetes.

1998 contributors:

Mr. and Mrs. L.H. Kissler
Mrs. Don Scott

Children's Charities of Idaho, Inc. Fund-1990

Established to assure ongoing operation of this fund raising program in support of projects for needy children.

First Presbyterian Church of Idaho Falls Fund-1995

Established through transfer of a trust, earnings from this fund support programs as designated by trustees of the Idaho Falls church.

1998 contributors:

Donald and Joann Cissel
Donald F. Lloyd

Friends of the Nampa Public Library Endowment Fund-1995

Established to assure ongoing support for operation of the Nampa Public Library.

Idaho Association of Museums Endowment Fund-1998

Created by this organization to support projects of its member museums as determined by its board of directors.

Idaho Association of School Administrators Fund-1995

Earnings from this fund support programs providing additional education for members of this statewide association.

Idaho Black History Museum Endowment Fund-1998

Created by this recently formed organization, distributions from the fund will be used for the maintenance of the historic building which houses the museum.

Idaho Museum of Mining and Geology Endowment Fund-1994

Established to assure ongoing support for operation of the museum at the old Idaho penitentiary site in Boise.

Idaho Falls Ducks Unlimited Fund-1995

Established through transfer of a trust, earnings from this fund support programs as designated by the board of the Idaho Falls organization.

Idaho State School for the Deaf and Blind Foundation Fund-1994

Established to support programs as designated by the board of the Gooding school.

Marshall Public Library Endowment Fund-1991

Established to assure ongoing operating support for the Marshall Public Library.



The Idaho Black History Museum in Boise benefits from an ICF endowment.

The 180 Funds of the Idaho

*Marshall Public Library
Endowment Fund-1991, continued:
1998 contributors:*

Albertson's, Inc.

Rayna D. Valentine

In memory of Fred Ringe:

Mr. and Mrs. Max S.
Albertson

Mr. and Mrs. Allan W.
Bacheller

Henry R. Boomer

Cooper & Larsen, Chartered

Judith R. Flandro

Juniper Hills County Club

Mr. and Mrs. Woodrow
Kerbel

Melody F. Maloney

Racine, Olson, Nye, Budge
& Bailey Chartered

Archie W. Service

Meridian Education Foundation Endowment Fund-1997

Created to ensure a steady stream of income available for grants to fund innovative projects in the Meridian School District.

National Alliance for Mentally Ill, Boise Fund-1998

Created by this organization to support its operations.

PAYADA, Inc. Endowment Fund-1997

Created by this Boise organization to assure annual support for its substance abuse prevention programs for area youth.

Portneuf Greenway Foundation Endowment Fund-1997

Earnings from this fund will be used for the expansion and maintenance of the Portneuf Greenway in Pocatello. Among the priority projects will be the construction of a Greenway Historic Loop Drive and trail through the Portneuf Gap area

and/or the Gittins Family Historic Site, emphasizing the Portneuf Gap's importance to the development of Pocatello.

St. John's Episcopal Church Endowment Fund-1997

Created by this Idaho Falls church to meet future operating needs.

Stanley Sawtooth Meditation Chapel Endowment Fund-1997

Created to provide a permanent source of funds to maintain this historic building in Stanley.

TESH, Inc. Fund-1990

Established to assure ongoing operating support for this Coeur d'Alene-based development workshop for mentally disabled citizens.

THE OPERATING ENDOWMENT

The Idaho Community Foundation is fortunate that in its early years its board of directors had the vision to develop an operating endowment, contributed mainly by the business community. The operating endowment has always been critically important in helping to fund ICF's administrative expenses — our costs of doing business.

The operating endowment now exceeds one million dollars in value and in 1998 funded approximately 24% of the foundation's cash expenses. The income provided by the fund helps ICF maintain its modest fee structure for managing endowment funds, thus helping us to continue our cost-effective service to donors.

*The operating endowment contains the following funds with assets of **\$250,000-499,999:***

Northwest Area Foundation Operating Fund-1989

*The operating endowment contains the following funds with assets of **\$100,000-\$249,999:***

J.A. and Kathryn Albertson Operating Fund-1990

Boise Cascade Corporation Operating Fund-1989

*The operating endowment contains the following funds with assets of **less than \$100,000:***

Bank of Eastern Idaho Operating Endowment Fund-1998

Basic American, Inc., Operating Fund-1991

Coeur d'Alene Mines Operating Fund-1995

Deloitte & Touche Operating Fund-1991

John B. Fery Fund-1994

Established by Boise Cascade Corporation in appreciation of Mr. Fery's distinguished service as chief executive officer of the company and in recognition of his contribution to Idaho as founding chairman of the Idaho Community Foundation.

First Interstate Bank Operating Endowment Fund- 1991

First Security Bank Operating Endowment Fund-1991

Global Travel Operating Fund-1991

Hecla Mining Operating Fund-1991

William R. Hewlett Fund-1992

Idaho Community Foundation Operating Endowment Fund-1991

This fund was created to review small and anonymous gifts intended to help ICF in perpetuity with its operating expenses.



John and Dee Fery's fund is advised. And Boise Cascade established an operating endowment in his honor.



Nick and Sara Ifft have created two endowments in ICF. One benefits charities in Eastern Idaho. The other assists ICF with its operating expenses.

Community *Foundation*

Nick and Sara Ifft Operating
Endowment Fund-1998

Idaho Power Company
Operating Fund-1990

Intermountain Gas Industries
Foundation Operating
Fund-1991

Key Bank Operating
Endowment Fund-1992

Morrison Knudsen Company
Foundation Fund-1991

Potlatch Corporation
Operating Endowment
Fund-1992

John and Karen Rosholt
Operating Endowment
Fund- 1998

Steele-Reese Foundation
Operating Endowment
Fund-1994

U.S. Bank Operating
Fund-1991

U S WEST Communications
Operating Endowment
Fund-1992

Washington Trust Bank
Operating Endowment
Fund-1998

ICF encourages businesses and individuals to join the list of Foundation supporters who have created named operating endowment funds with contributions of at least \$5,000. We are of course honored to accept contributions to the operating endowment fund of any size, at any time.

NONENDOWED FUNDS

During 1998, the Foundation managed the following nonendowed funds:

PHILANTHROPIC GIFT FUNDS

Tom and Alice Hennessey
Philanthropic Gift Fund

Irv and Trudy Littman
Philanthropic Gift Fund

Marshall Family Fund

Pat and Lisa McMurray
Family Fund

SPECIAL PROJECT FUNDS

J.A. and Kathryn Albertson
Foundation Educational Fund-
1996

The fund was created through a special partnership with this private foundation. In 1998 it was used to provide \$735,000 for grants of up to \$25,000 each for innovative educational projects throughout the state.

Bridge to 2000 Project-1997

Created to collect contributions from a wide variety of sources to expand and improve the river greenbelt in Idaho Falls.

1998 contributors:

Patrick N. Baker

H. Bradley and Elaine
Eldredge

C. Leone Englund

J. Brian and Renee R. Hill

Karen Leonard

R. Kay Snyder

**Colonial Arts Center Project
Fund-1994**

The fund is being used for a capital campaign to convert the old Colonial Theater and an adjacent building in downtown Idaho Falls into facilities for performing arts presentations, an art gallery and offices, classrooms and storage for arts organizations.

1998 contributors:

Joan Abbott

Philip and Sharon Affleck

Don R. and Anne R.
Alexander

Lane and Karen Allgood

Architectural Building
Supply

Judy and Bill Armour
Automotive Supply

B & F Distributing

Bank of Eastern Idaho

Basic American, Inc.

Mr. and Mrs. Robert E.
Beckwith

Bob and Barbara Berlin

Kay Bishop

Charles R. and L. Janeice
Boge

Susan H. Bower

Jerry and Rickie Brady

Rusty Broughton

Louise Brown

Shawna Brown

C & D Properties

David and Mavis Cauffman

Center for Sight

Randi and Gary Chaikin

Sara and Rocco Cifrese

Ron and Adelle Clawson

Ryan Clement

Loa and Dick Clute

Steve and Silvia Coggin

Lewis and Judy Cook

Jim and Peggy Countryman

Althea and Dan Cudaback

Jean Donaldson

Doug Andrus
Distributing, Inc.

Jay and Sally Ellis

Gary E. and Lynn Ellwein

Linda Evans

First Security Bank

Shannon Flynn and Andy
Baumer

Ron Frazell

Lexie and Alan French

Vernon O. Gaffner

Lee and Linda Gagner

John and Norma Galazin

General Mills Operations, Inc.

Carrie L. Getty



Joe and Kathryn Albertson were early ICF benefactors through the unrestricted fund they established. In recent years the J.A. and Kathryn Albertson Foundation Educational Fund has provided ICF with significant support for educational grants throughout Idaho.



Barbara Marshall and husband Wendell created a field-of-interest fund to benefit Eastern Idaho. She later created a nonendowed philanthropic gift fund to help with her family's annual giving.

The *180 Funds* of the Idaho

Colonial Arts Center Project Fund-1994, 1998 contributors, continued:

Charlotte Goddin and Keith Daum
Joseph Groberg
Fred and Peggy Gunnerson
HK Contractors, Inc.
Al and Gayle Hagler
Fred Hahn
Blake and Laurel Hall
Scott Hallman
Bert Hansen
Michele and John Hansen
Russell and Eddie Heath
Daniel Hinckley
Charles and Marci Homer
Tim and Anne Hopkins
Idaho Pacific Corporation
Kenlon P. and Carol Johnson
Brock Jones
Kathie Jones
Evelyn Juell
Barry Keller
Chuck and Gail Kemper
Randy and Debra Kern
Margie M. Kinghorn
Dieter A. Knecht
Chip and Louise Krantz
Kenneth Krell
Miles LaRowe
Rick and Leigh Latham
Leland Beckman Foundation
Long Custom Woodwork, Inc.
John K. Long
Liz and Dick Loughney
Donald W. Macdonald
Kent and Jamie Marboe
Mr. and Mrs. Stephen E. Martin
Chris and Cheryl Mattocks
Mark McAlister
Ray and Douglas McCarty
Patrick and Karen McGahan

Janice and Jim McGeachin
Frank and Margaret McGovern
Martin and Connie McLellan
Donna and Orville Meyer
Dr. and Mrs. James C. Milam
Linda Milam
Dean Miller
Sharon Modrow
J.S. Molen
Diane Mondell
Courtney Morgan and Randy Stimpson
Judy and Dean Mortimer
D.D. Mudd
Kris and Mardean Munk
Richard Napier
Rex J. and Rae K. Nelson
Douglas and Nancy O'Brien
Ron Obendorf
Sheila Olsen and Lori Marks
Gary and Linda Patrick
Richard V. Pedersen
Paula Peterson
Michelle Pettingill
Philip McCowin
Orthopedics, P.A.
Karen Poole
The Post Register
Dick and Gayle Powell
Premier Dental Care
Arthur B. and Renee M. Rammell
LeRoy and Ethel Rasmussen
Rex and Melinda Redden
Wendy Reece and Scott Hyster
Larry and Deb Reinhart
Ken and Joy Rempe
Jim Richards
Kimmon Richards and Douglas Whatmore
Paul and Alexis Ripple
Bernice Sargis
Colleen Scheid

Dr. and Mrs. Thomas J. Setter
Jeanne Sherman
David H. Shipman
Jerry and Ann Shively
David Shrader
Oliver D. Smith
Marcella and Randy Spruill
Linda and Bruce Stanger
Scott A. Stawski
Amy and John Stevens
B. Shields and Sylvia Stutts
Brent R. Swanson
Brent and Vicki Taylor
Bill and Kati Thiel
Mr. and Mrs. Curt R. Thomsen
Utterbeck Construction
Robin Vanhorn
Anne Staton Voilleque
Steve Wagner
C. Gordon Ward
Dane and Sherry Watkins
Albert Whitesell
John and Jan Wilczynski
Ellen Wingerson

Idaho Assistive Technology Project Fund-1994

The fund is used as collateral to guarantee loans for the purchase of adaptive equipment intended for improving the lifestyle of disabled individuals. By year-end 1998 the program had provided assistance with \$315,271 in loans to 86 qualifying individuals.

1998 contributor:

U.S. Bancorp

Idaho Falls Opera Theater Fund-1994

Created by Miles and Virginia Willard, the fund is being used for annual operating support of the organization over a five-year period.



Ralph and Mary Lynn Hartwell have set up an advised fund in ICF. In addition, they were generous donors to the ICF special project fund which benefited the renovation of the Colonial Theater in Idaho Falls.

Community *Foundation*

Idaho Human Rights Network Fund-1994

Established by the Northwest Coalition Against Malicious Harassment with a grant from the Northwest Area Foundation, the fund supports operation of a statewide network of community-based organizations to address the problem of bigotry in Idaho.

Idaho Peace Officers Memorial Fund-1995

The fund supports establishment of a permanent memorial to Idaho law enforcement officers who have died in the line of duty.

In memory of Albert C. Barberis:

Olivia Barberis

Mr. and Mrs. Vic Bernasconi

Tim W. Cossel

Teresa Fisch

Mr. and Mrs. Homer Garrett

Mr. and Mrs. Donald Milburn

In memory of Rose Blanc:

Ada County Records, Property and Microfilm

Mr. and Mrs. Charles Aitchison

Mr. and Mrs. Jack L. Blanc

Joseph and Genevieve Bross

Mr. and Mrs. Neal Broyles

William and Beatrice Cady Compass, Ltd.

Mr. and Mrs. James Dundon

Mr. and Mrs. Louie Echevarria

Mr. and Mrs. Jack M. Ellis Robert and Susan Evangelho

Mr. and Mrs. Douglas Gates

Earl and Elizabeth Green

Virginia Ann Hartley

Alice R. Jones

Sheryl Long

Mr. and Mrs. Arthur Mellios

Mr. and Mrs. W. LeRoy Meyer

Mr. and Mrs. Donald Milburn

Kim S. Monti

Steve Mulder

Dolores Nash

Mr. and Mrs. Greg C. Oster

Mr. and Mrs. E.A. Panzeri

Mr. and Mrs. Ernest Paskett

Arladene Smith

Standford and Gayle Speizer

Mr. and Mrs. Charles Stevens

Mr. and Mrs. James Stoehr

Marie Uriarte

Betty Cole Walker

Mr. and Mrs. Donald Wells

Mr. and Mrs. Charles R. Wiley

In memory of Don and Esther Deen:

Donald A. Deen

In memory of Wade Feldner:

Nancy K. Feldner

Karen Jo Hollis

In memory of Richard Foote:

N. Janie Foote

In memory of Stephanie H. Fuller:

Mr. and Mrs. James E. Herridge

In memory of Linda Huff:

Stu Hobson

In memory of Ben T. Newman:

Mary Lou White

In memory of Mark Stall:

Drew Lanter and Marg Clennon

Meridian Ministers' Fellowship

Payette County D.A.R.E.

In memory of Jack Williams:

Standford and Gayle Speizer

In memory of Gene and Ellen Wilson:

Jeff Wilson

Other 1998 contributors:

David and Sue Adams

Albertson's, Inc.

George R. and Marie L. Allen

Allied Seed

Mr. and Mrs. Rick Altig

Mr. and Mrs. Charles Armstrong

David Avelar

Mr. and Mrs. Jim L. Batt

Mr. and Mrs. William L. Beattie

Jack Beery

Mike Bishop

Blackaby Insurance Agency

Blaine County Sheriff

Boise City Citizens Police Academy

Boise Lodge No. 2, A.F. & A.M.

Boise Police Association

Bonnors Ferry Peace Officers Association

Doug Borah

Charles Bower

Ted Bowers

Paul and Colleen Brady

Marshall N. Brisbin

Buena Park Police Association

M. Dean and Judy Buffington

William Buie

Kevin and Donna Butler

H. Monty Calhoun

Samuel H. Callen

Jonathan C. Camin

Caribou County Search and Rescue

Wendy I. Carpenter

Mr. and Mrs. Larry J. Chase

Mr. and Mrs. John A. Christy

City of New Meadows

City of Shelley

City of Twin Falls

Harvey E. Clary

Mr. and Mrs. Greg Clay



Miles and Virginia Willard not only have supported the Idaho Falls Opera Theater with their vocal talents, but also with a special project fund which is providing operating support to the theater.

The 180 Funds of the Idaho

Idaho Peace Officers Memorial Fund- 1995, 1998 contributors, continued:

Coeur d'Alene Police
Officers Association

Brent Coles

Connolly Construction
Company

Bill and Bonnie Corson

Gary and Susan Cuff

Dan's Ferry Service

Alisa M. Dean

Mr. and Mrs. Robert C. Deeds

Kathryn DeWald

John D. Dice

Mr. and Mrs. Michael Dillon

Arthur Dollard

Rick A. Durbin

Mr. and Mrs. Cliff Exley

Sharry Feldner

Travis Feldner

Edwin G. Field

Rex and Shirley Flavel

Glenn and Joyce Ford

Tony and Shelli Ford

Lois and Bruce Frazier

Friday Farms

W.K. Fries

Frank and Bonnie Fullmer

Garden City Optimist Club

Dave Giffin

William and Patricia Gordon

George A. and Cindy L.
Gorino

Douglas Graves

Paula A. Greene

Patricia Hafer

Donald L. Hahn

Michael Hart

Larry A. Hayhurst

Mr. and Mrs. Kenneth A. Hays

Ann M. Heltsley

Kenneth Highley

Helen D. Hill

Jeffrey W. Hill

Mr. and Mrs. Steven A. Hill

Ted and Linda Hopfenbeck

William H. and Norma J.
Hopwood

Horseshoe Bend Optimist Club

Mr. and Mrs. George Housel

A. Rich Humpherys

Idaho Special Olympics

Idaho Sporting Goods

Idaho State Police Association

M.E. and Lillian J. Jaynes

Jefferson County Sheriff

Michael L. Johnson

Lisa and Michael Joyce

Kay and Rachel Kahus

Kelly's Grand Ole Opry

H.A. and Donna Kent

Emma Kindelberger

A. B. Knight

Kootenai County

G. Launt

David C. and LeeAnn T.
Leavitt

W. Robert Lemke

Mr. and Mrs. Robert W. Loe

Malheur Federal Credit Union

Cynthia Malm

C.B. Marcinkowski

Mr. and Mrs. Elmer Mathis

Melba High School

Melba Middle School

Melba Quick Stop

Meridian Rotary Club

Donald E. Moller

Moscow Police Association

Peter W. Moyle

Mr. and Mrs. Skip Nakashima

Mike R. Nance

New Hope Chrisitan Church

Russell L. Newcomb

Mr. and Mrs. Allen B.
Nicholson

Jimmie and Betty Nicola

Stephen C. Nutting

Francis O'Connor

Judith Colpitts Odmark

Pamela A. Olsen

Brian Olson

Owyhee County Sheriff

Mr. and Mrs. E.J. Parker

Mr. and Mrs. Edward Parker

Donald F. and Dawn A. Peck

Mr. and Mrs. D.R. Peterman

Eleanor Peugh

Sheila and Beaver Poe

Charlotte K. Porter

Carl and Elaine Poulter

Lisa Prouty

Trish Robinson

Mr. and Mrs. Michael Rowe

Monte Russell

Jackie Sanders

Alec Sarrazolla

David Sasser

Mr. and Mrs. Ed Schriever

Judith and John Schubert

Paul Scragg

Mark and Gail Sheehan

Denise Sheldon

Shelley Police Reserves

Mr. and Mrs. Ronald Shepard

Audrey Shinn

Donald Solum

Frank D. Spencer

Donnie and Muriel Spies

Linda Steiner

Craig Stotts

Bob Stowe

Dorothy A. Strait

Charles D. Sunderlin

Matthew Takagi

Thornton, Oliver, Keller

Pat and Jan Trammell

U.S.T., Inc.

Jason L. Vogt

Donald K. and Margaret K.
Wadley

Community *Foundation*

WalMart
Marvin M. and Sylvia A. Ward
Janet Weaver
Cora Wegner
David W. Wendell
Bill and Marcie Wettig
Gary White
Mr. and Mrs. Bill Willhite
Johnny A. Willis
Sue Wilson
Vern E. Ziegler

Idaho Youth Involvement Project Fund-1998

Created to collect gifts from other organizations to assist in ICF's statewide program to fund projects addressing needs in communities as identified by youth.

1998 contributors:

Idaho Power Company
Key Bank of Idaho, N.A.
The Troxell Fund, Inc.
The Whittenberger Foundation

Multiple Sclerosis Direct Aid Fund-1992

This fund represents the proceeds of an Itzhak Perlman Benefit Concert and was created by Ms. Judy Strand for the sole purpose of providing direct benefit to those persons afflicted with MS who are living in the service area of the Idaho Chapter of the National Multiple Sclerosis Society. Disbursements are made through the Idaho chapter.

Operation Night Vision, Inc. Fund-1998

Created by a group of concerned citizens, the contributions collected for this special project fund will provide special thermal imaging systems to the Boise Fire Department.

1998 contributors:

Mr. and Mrs. Frank W. Anderson

Associated Services Group
Stephen L. Barr
Boise Cascade Corporation
Boise Solid Surface
Mr. and Mrs. R. Kirk Ewart
Fritz O. Eymann
John Cannon
GYM Outfitters, Inc.
Linda Hendrickson
Hewlett Packard, Boise Division

Jefferson School PTA
Mr. and Mrs. David L. Johnson
Kenneth E. Johnson
Mary E. King
Norma Jean Lamb
Celestine M. McLaughlin
Helen I. McLaughlin
John E. Medes
A. Lenore Mitchell
Tates Rents
Carolyn A. Terteling
Mr. and Mrs. Robert Wood

Steele-Reese Foundation Special Project Fund-1997

Created by this private foundation, grants from the fund are determined by ICF and earmarked to organizations in rural Idaho in the areas of education, social welfare, health, and the humanities.

Unitarian Fellowship of Idaho Falls Fund-1994

Created by Miles and Virginia Willard, the fund is being used for expenses associated with filling an administrative position at the church with remaining funds to be issued annually for operating support over a five-year period.

United Cerebral Palsy of Idaho, Inc. Scholarship Fund-1996

Created through gifts from Micron Technology, Ore-Ida Foods, and T.J. International.

The fund provides nine scholarships to students enrolled in an Idaho college or university and who were chosen from among entrants to the Les Bois Run, Walk, & Roll event to benefit United Cerebral Palsy of Idaho, Inc.

Idaho Community Foundation Operating Fund-1988

Contributions are made by individuals, corporations and foundations who recognize that operating support is a vital need for the Idaho Community Foundation. Contributions enable the Foundation to focus on its mission of supporting and enhancing philanthropic and charitable activities in Idaho, while minimizing costs that otherwise would be assessed to the charitable funds of the Foundation.

Primary in-kind donors:

Hewlett-Packard
Park Price Motors
U.S. Bank

1998 contributors:

20th Century Motors
Albertson's, Inc.
Larry Allsberry
Pat Arney
*ARTCO
Clen and Emma Atchley
Don R. Atkinson
Denise Bittner
Jerry and Rickie Brady
Stewart and Molly Butler
*Cavanaugh's/Templins Resort
Dolores Scott Chapman
Larry Chetwood
Richard I. Clayton, Sr.
CM Company, Inc.
Mrs. Ralph J. Comstock, Jr.
Mr. and Mrs. Brian Copple
Helen H. Copple
Jacqueline S. Crist



Ethel Whittenberger's legacy established The Whittenberger Foundation, which in turn was the genesis of ICF. In 1998 The Whittenberger Foundation also provided support for ICF's youth involvement project.



Through The Troxell Fund, Inc. (a private family foundation), Barbara Troxell also provided assistance to ICF's youth involvement project.

The 180 Funds



Earl Reynolds, by designating ICF as the beneficiary of a deferred gift, became the first member of ICF's Legacy Society.

Mr. and Mrs. Samuel H. Crossland
 Barbara Dargatz
 Jack and Margaret Davies
 A. Dale Dunn
 Larry and Judy C. East
 Dr. and Mrs. Roy Ellsworth
 Ann M. Erstad
 Ed and Leslie Esselburn
 Farmers and Merchants State Bank
 *John B. Fery
 Charles and Bee Finne
 Julie Firestone
 *Margaret Gigray
 Steve Guerber
 Mr. and Mrs. Junior Haddon
 The Halliday Foundation, Inc.
 Ralph W. and Lillian S. Hansen
 Jack Hawley
 Robert B. Hayes
 *Tom and Alice Hennessey
 Martin and Frances Hepker in honor of Park and Sharon Price
 Lynn Hofflund
 Dr. and Mrs. Robert A. Hoover
 Albert H. Huber

Bobbie Huguenin
 Jerry Jenkins
 Robert and Diane Johnson
 *Mr. and Mrs. Kenlon P. Johnson
 Jones & Casey Funeral Home
 Rod Kagan
 James A. Kissler
 Mr. and Mrs. L.H. Kissler
 Margot Knight
 Mr. and Mrs. George Knoff
 Robert E. Krueger
 Dr. and Mrs. James Lansche
 Irv and Trudy Littman
 Roger A. Martell
 *William Vern McCann Jr.
 Grace M. McKenna in honor of Park and Sharon Price
 *Park Price
 *Karen Rosholt
 *Nancy Sue Wallace
**Denotes in-kind gift*

SUPPORTING ORGANIZATIONS

The Kissler Family Foundation was established in 1998 by James A. Kissler, Boise, and is affiliated with the Idaho Community Foundation.

LEGACY SOCIETY

Members of the Legacy Society are individuals who have identified themselves as having designated the Idaho Community Foundation as an ultimate beneficiary of deferred gifts in such documents as wills, bequests, and other planned giving instruments. The Foundation welcomes additions to this current list of members.

Guy E. and Mary D. Butterfield
 John Chapman
 Dennis Dahl
 Robert and Barbara Dargatz
 Maxine Elliott
 John B. Fery
 Linda Grable-Curtis
 Ron and Diane Plastino Graves
 Steve and Donna Guerber
 Alice E. Hennessey
 Nick and Sara Ifft
 Tom Morgan
 Mr. and Mrs. Stephen Murdoch
 Mr. and Mrs. Allen Pennay
 Earl C. Reynolds Jr.
 Ann Lucini Williams
 Bobbette Youmans

THE NIF AND SUE SULLIVAN FUND — HELPING HOPE HOUSE FOREVER

Page 19 of this annual report includes a description of the Nif and Sue Sullivan Fund, which was established in 1998 to provide assistance in perpetuity to Hope House in Canyon County. Behind this brief description is the story of one woman's determination to look after children needing the warmth of a home and the dedication of a Sun Valley couple to helping her fulfill her mission.

Since Hope House was established by Donnalee Velvick in 1973, Donnalee has cared for over 360 children. With essentially no government support, she has been able to make a home for these youngsters because of the generosity of people like Nif and Sue Sullivan.

The Sullivans had provided significant support to Hope House each year beginning in 1986,

but last year they decided to ensure that Hope House would have their help forever. As long-time residents of Idaho, Nif and Sue were interested in leaving a legacy of caring — particularly for Hope House.

They were able to achieve their objective by giving appreciated stock valued at over one million dollars to the Idaho Community Foundation to establish an endowment, with the distributions from this fund designated for Hope House. Now the Sullivans can maintain their keen interest in the Hope House children, secure in the knowledge that Donnalee Velvick and her "family" can always count on assistance from the Nif and Sue Sullivan Fund. Other donors sharing Nif and Sue's interest in Hope House may add to the endowment started by the Sullivans at any time.



Summarized *Financial* Data

SUMMARIZED FINANCIAL DATA FOR YEARS ENDED DECEMBER 31, 1998 AND 1997

A copy of the complete 1998 financial statements audited by Arthur Andersen LLP is available upon request from the Idaho Community Foundation, 101 South Capitol Boulevard, Suite 1702, Boise, ID 83702

STATEMENTS OF FINANCIAL POSITION

| Assets | | 1998 | 1997 |
|--------------------|---|----------------------|----------------------|
| | Cash and equivalents | \$ 819,211 | \$ 767,295 |
| | Investments | 19,353,494 | 15,955,876 |
| | Receivables | 2,818,304 | 1,723,499 |
| | Prepaid expenses | — | — |
| (1) | Other assets, net | 1,088,533 | 950,786 |
| | Total Assets | \$ 24,079,542 | \$ 19,397,456 |
| Liabilities | | | |
| | Accounts payable | \$ 19,422 | \$ — |
| | Total Liabilities | 19,422 | — |
| Net Assets | | | |
| | Unrestricted: Operating | 73,994 | 62,527 |
| | Endowment | 20,960,922 | 17,500,365 |
| | Special Projects | 595,470 | 496,099 |
| (2) | Temporarily Restricted: Endowment | 123,632 | 218,029 |
| | Special projects | 2,306,102 | 1,120,436 |
| | Total Net Assets | 24,060,120 | 19,397,456 |
| | Total Liabilities and Net Assets | \$ 24,079,542 | \$ 19,397,456 |

STATEMENTS OF ACTIVITIES

| Revenues, gains and other support | | 1998 | 1997 |
|--|--|------------------|------------------|
| | Contributions and memberships | \$ 4,613,231 | \$ 4,696,663 |
| | Interest and dividends | 498,140 | 882,003 |
| | Investment gains (losses) | 1,827,843 | 1,896,386 |
| | Unrealized gain (loss) on other assets | — | 15,335 |
| | Total Revenues | 6,939,214 | 7,490,387 |
| Expenses | | | |
| | Grants | 1,807,600 | 2,390,897 |
| (3) | Administrative | 468,950 | 456,470 |
| | Total Expenses | 2,276,550 | 2,847,367 |
| | Revenues over expenses | 4,662,664 | 4,643,020 |
| | NET ASSETS, beginning of year | 19,397,456 | 14,754,436 |
| | NET ASSETS, end of year | \$ 24,060,120 | \$ 19,397,456 |

(1) Other assets include works of art which were contributed to the Foundation during 1994. In accordance with the endowment agreement, these works of art will be liquidated within a reasonable period of time, and the net proceeds from the sales will be added to the endowment fund. During 1996, the Foundation recorded an unrealized loss of \$1,445,448 to adjust the artwork to current net realizable value. This adjustment represents a reduction of \$1,016,471 in the value of the artwork and an increase of the allowance for estimated commission and other selling expenses of \$428,977. The December 31, 1998 and 1997 other asset balances of \$938,033 and \$950,786, respectively, are net of allowance for estimated commission and other selling expenses of \$1,295,080 and \$1,357,534, respectively.

(2) Represents outstanding pledges.

(3) Includes \$62,439 for investment management fees.

The *Leadership* of the Idaho

BOARD OF DIRECTORS

DON ATKINSON
Sun Valley
(2) (4)

ELIZABETH CASEY
Vice President
Jones & Casey Funeral
Home
Salmon
(2) (6)

DOLORES CHAPMAN
McCall
(1) (2) (6)

JOHN B. FERY
Retired Chairman and CEO
Boise Cascade Corporation
Boise
(1) (2) (5)

MARGARET E. GIGRAY
Journalist/Vice Chairman
Whittenberger Foundation
Caldwell
(5) (6)

RALPH M. HARTWELL
President
The Hartwell Corporation
Idaho Falls
(3) (6)

ALICE E. HENNESSEY
President and Executive
Director
Idaho Community Foundation
(1)

DUANE JACKLIN
Managing Partner
Riverbend Commerce Park
Post Falls
(2) (4) (5)

KENLON P. JOHNSON
President
Forde Johnson Oil Company
Idaho Falls
(1) (2) (3)

BESSIE KATSILOMETES
Civic Leader
Pocatello
(2) (6)

BRAD LITTLE
Rancher
Little Land and Livestock
Company
Emmett
(3) (6)

ROGER A. MARTELL
Retired Partner
Deloitte & Touche LLP
Boise
(1) (2) (4)

WILLIAM VERN McCANN JR.
Attorney at Law
Lewiston
(1) (5) (6)

PARK PRICE III
President
Park Price Motor Company
Pocatello
(1) (4) (5)

JOHN A. ROSHOLT
Partner
Rosholt, Robertson & Tucker
Twin Falls
(2) (3) (5)

NANCY SUE WALLACE
President, City Council
Coeur d'Alene
(2) (3) (6)

OFFICERS

PARK PRICE III,
Chairman
President,
Park Price Motor Company
Pocatello

ROGER A. MARTELL,
Vice Chairman
Retired Partner,
Deloitte & Touche LLP
Boise

ALICE E. HENNESSEY,
President
Executive Director,
Idaho Community Foundation
Boise

WILLIAM VERN McCANN JR.,
Secretary
Attorney at Law
Lewiston

IRVING LITTTMAN,
Treasurer
Vice President and Treasurer,
Boise Cascade Corporation
Boise

STAFF

ALICE E. HENNESSEY
President & Executive Director

BOBBETTE F. YOUMANS
Grants/Fiscal Officer

ELAINE KEMPTON
Administrative Assistant

KAREN ANDREE
Financial Assistant

Committee assignments:

- (1) Executive Committee
- (2) Asset Development Committee
- (3) Gift Acceptance Committee
- (4) Investment Committee,
Chaired by Irving Littman of
Boise and also includes C.E.
"Gene" Hill, Boise.
- (5) Nominating Committee
- (6) Grants Committee

bold = committee chairman

Board service ended in 1998:

FORD ELSAESSER
Elsaesser, Jarzabek & Anderson
Sandpoint

D. WHITMAN JONES
President, Business Psychology
Associates
Boise

H.F. MAGNUSON
President, H.F. Magnuson Company
Wallace

JAMES H. ROPER
President & CEO, Roper
Clothing Company
Burley

Community *Foundation*

REGIONAL ADVISORY PANEL MEMBERS

NORTHERN REGION

Dan Hammes
St. Maries

Sue Sneddon
Montpelier

David Keyes
Bonners Ferry

John G. St. Clair
Idaho Falls

H.F. Magnuson
Wallace

Daniel S. Hess, Rexburg,
completed his service on
this panel in 1998.

Colleen Mahoney
Lewiston

SOUTHWESTERN REGION

William Vern McCann Jr.
Lewiston

Dolores Chapman
McCall

Fred Noland
Grangeville

Judith T. Ellis
Indian Valley

JoAnn Thompson
Moscow

Margaret E. Gigray
Caldwell

Nancy Sue Wallace
Coeur d'Alene

Connie Hogland
Boise

Stanley C. Wood
Coeur d'Alene

Bliss Knowles
Ketchum

EASTERN REGION

Elizabeth Casey
Salmon

Paul Nettleton
Murphy

Bessie Katsilometes
Pocatello

James A. Roper
Burley

Lynn Loosli
Ashton

Karen Rosholt
Twin Falls

Robert R. Loucks
Salmon

Harry B. Turner
Twin Falls

Linda S. Martin
Idaho Falls

David Little, Emmett,
completed his service on this
panel in 1998.

Sharon Price
Pocatello

Arthur Oppenheimer, Boise,
completed his service on this
panel in 1998.

Lew Rodriguez
Blackfoot

Gary Mahn, Boise, also served
on this panel in 1998.



PROFESSIONAL SERVICES

Independent Public Auditors:
Arthur Andersen LLP

Investment Managers:
Dimensional Fund Advisors Inc.
First Security Bank, N.A.
The Vanguard Group
Trust Company of the West
U.S. Bank

Legal Counsel:
Hawley Troxell Ennis & Hawley
LLP, Boise.

Public Relations Counsel:
Elgin, Syferd/Drake, Boise

Annual Report Design:
Communications et al, Boise

Tax Status: The Internal Revenue Service has classified the Idaho Community Foundation as tax-exempt under Section 501 (c)(3) of the Internal Revenue Code and as a publicly supported charitable organization under Sections 509 (a)(1) and 170 (b)(A)(vi).

OTHER PUBLICATIONS AVAILABLE

"Grant Making Guidelines"

"34 Ways to Invest in Idaho:
A Guide for Donors"

"Investing in Idaho: A Guide for
Financial Advisors"

"Investment and Distribution Policy"

"Helping Donors Decide: Private
or Community Foundation"

"Differences in Tax Treatment of
Private and Community Foundations"

"The Idaho Community Foundation
and Agency Endowments"

Quarterly Newsletters

Acorn Society Brochure

Grant Making Brochure

Legacy Society Brochure

To order these publications, or for further information:

Idaho Community Foundation
P.O. Box 8143
Boise, Idaho 83707

208-342-3535

1-800-657-5357 (toll-free within
Idaho)

208-342-3577 (FAX)

info@idcomfdn.org (e-mail)



101 S. Capitol Blvd.
Suite 1702
Boise, ID 83702

P.O. Box 8143
Boise, Idaho
83707

208-342-3535

1-800-657-5357
(Toll Free within Idaho)

208-342-3577
(fax)

info@idcomfdn.org
(e-mail)

NON-PROFIT
ORGANIZATION
U.S. POSTAGE
PAID
BOISE, IDAHO
PERMIT NO. 673